

BARNARD

THE LIBERAL ARTS COLLEGE
FOR WOMEN
IN NEW YORK CITY

2011 Data Book

Table of Contents

General Information	1-4
Quick Facts	2
Board of Trustees.....	3
College Organizational Chart and Governance	4
Admissions	5-16
Admissions and Yield Trends.....	6
High School Performance.....	7
First-Year Student Ethnic Distribution	7
First-Year Student Geographic Distribution	8
Early Decision, International, and Transfer Admissions and Yield Trends.....	9
Cross-Admission Schools.....	10-11
College Rankings and Guides	12
US News Rankings Criteria and History.....	13-15
Students	17-28
Undergraduate Enrollment and Ethnic Distribution	18
Visiting International Students Program Enrollment	18
Undergraduate Geographic Distribution	19
Class Sizes.....	20
Barnard-Columbia Partnership and Cross-Registration Trends	21
Graduated Majors	22-23
Study Abroad Leaves and Destinations.....	24-25
Graduation and Retention Rates.....	26
Student Awards.....	27
Top 10 Graduated Majors and Post-Graduation Plans of Seniors	28
Faculty	29-38
Faculty Counts, % Full-Time Minority, Student-Faculty Ratio.....	30
Full-Time Faculty by Division and Department	31
Full-Time Faculty by Rank, Gender, Ethnicity.....	32
Tenured Faculty by Gender, % Minority Tenured.....	32
Full-Time Faculty Age Distribution	33
Full-Time and Part-Time Faculty by Gender.....	34
Total Faculty by Gender, Full-Time Faculty by Rank and Gender	35
Full-Time Faculty Salary Trends.....	36
Full-Time Faculty Salaries by Rank and Gender	37
Federal Sponsored Research and FTE Faculty Leaves.....	38

Student Fees and Financial Aid	39-48
Barnard Total Costs Compared with 30 Peer Schools.....	40
Historical Tuition and Fee Increases	41
Financial Aid Program Data.....	42
Sources of Financial Aid - Barnard and Peer Group	43
Undergraduate Barnard Aid Recipients, Ethnic Distribution of Aid Recipients	44
First-Year Student Barnard Aid Recipients.....	45
Financial Aid Comparison Data and Average Graduate Indebtedness	46
First-Year Student Financial Aid Recipients by Total Financial Aid Parents' Income	47
Historical Cost of Attendance as a % of Median Family Income.....	48
Finance and Endowment	49-64
Operating Revenue and Expenses.....	50
Growth in Revenue and Expenses.....	51
Operating Revenue and Expenses History	52-53
Growth in Tuition and Fees v. Various Price Indices	54
Changes in TERM Bill and Financial Aid Costs	54
Historical Discount Rates, Barnard and COFHE Colleges	55
Employee Salary Increases v. New York CPI.....	57
Growth in Total Compensation	58
Components of Employee Benefits Cost.....	59
Long-term Debt Obligations.....	60
Debt to Net Asset Ratios	61
Endowment per Student Comparative Data.....	62
Endowment Performance	63
Components of Endowment Change and Endowment Spending Restrictions	64
Alumnae and Development	65-70
Alumnae Geographic Distribution.....	66
Barnard Fund Gifts and Spring Gala Contributions	67
Alumnae Giving Participation Rates.....	67
New Gifts and Pledges and Total Cash Receipts	68
Giving by Purpose History	69
College Staff	71-74
Staff Demographics.....	72
Staffing Trends	73
Facilities and Public Safety.....	75-77
Facilities Summary	76
Crime Statistics.....	77

General Information

Barnard College – Quick Facts

Barnard College was established in 1889 and is distinguished by four characteristics: It is a liberal arts college with a long tradition of excellence; it is part of a great research university; it is in New York City, and it is a college for women.

Enrollment (2010-11):

All undergraduates	2,456
African American	4%
Hispanic	9%
Asian	16%
Caucasian and Other	66%
International	5%
Countries represented	39

Student Body Characteristics:

First-year retention rate	94%
4-yr graduation rate	78%
6-yr graduation rate	87%

First-year Class Statistics (Fall, 2010):

Regular admissions:	
Applied	4,618
Admitted (27.8%)	1,285
Enrolled (45.1%)	580
Test score ranges (25 th to 75 th percentiles):	
SAT-Verbal	630-730
SAT-Math	620-710
SAT-Writing	650-750
ACT Composite	28-32

Faculty (2010-11):

Full-time faculty:	
Men	84 (40%)
Women	<u>124</u> (60%)
Total	208
Part-time faculty:	
Men	40 (26%)
Women	<u>113</u> (74%)
Total	153

Student-faculty ratio 9:1
[Based on FTE students (2,412) and FTE faculty (259)]

Costs and Financial Aid (2010-11):

Tuition	\$38,868
Comprehensive fee	\$1,678
Room (multiple)	\$7,750
Board (unlimited)	<u>\$5,200</u>
Total cost	\$53,496

5% overall increase from 2009-10

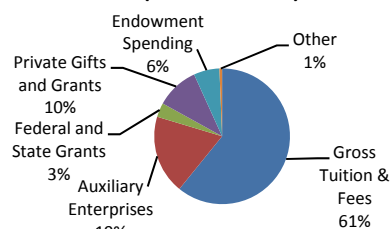
First-year students:	
Receiving Barnard aid	41%
Receiving some form of aid	55%

All undergraduates:	
Receiving Barnard aid	40%
Receiving some form of aid	51%
Avg. Barnard grant	\$28,450
Avg. financial aid package	\$33,795

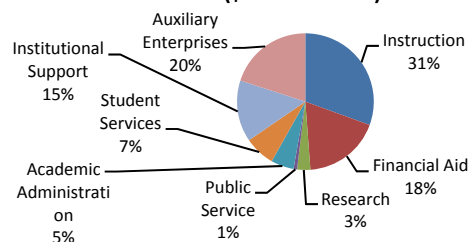
Class of 2010:	
Avg. financial indebtedness	\$14,142

Finances and Endowment:

**Gross Operating Revenue, Fiscal Year '10
(\$144.4 Million)**



**Gross Operating Expenses, Fiscal Year '10
(\$144.0 Million)**



Endowment value, 12/31/10 \$204.2 MM

Barnard/Columbia Partnership:

- Cross-registration for undergraduate and graduate level courses at both institutions
- Mutual access to libraries, athletic facilities, student activities
- Participation by Barnard athletes in Columbia's Division 1 athletic programs
- Barnard students receive a Columbia University degree

Board of Trustees

Trustees

Officers of the Board

Jolyne Caruso-FitzGerald, Chair
Cheryl Glicker Milstein, Vice Chair
Diana T. Vagelos, Vice Chair

Rosa V. Alonso '82
Laura Jacobs Blankfein '75
Judith Daynard Boies '59
Lee C. Bollinger, *ex officio*
President, Columbia University
Binta Niambi Brown '95
Jolyne Caruso-FitzGerald '81
Lois G. Champy '67
Dina Deluca Chartouni '82
Lisa Sprung Cohen '80
James M. Dow
Alison Estabrook '74
Myrna Fawcett '70
Joan Freilich '63
Nancy Garvey '71
Sibyl R. Golden
Linda Fayne Levinson '62
Anthony W. Marx
Cheryl Glicker Milstein '82
Jeanine Plottel '54
Azita Raji '83
William R. Reid
Eric R. Rosenfeld
Frances Sadler '72
Ravi Singh
Debora L. Spar, *ex officio*
President, Barnard College
Cynthia Stivers '78
Maureen Strafford '71
Zahava B. Straus '77
Diana T. Vagelos '55

Trustees Emeriti

Hon. Miriam Cedarbaum '50, *Trustee Emerita*
John Furth, *Trustee Emeritus*
Patricia F. Green '62, *Trustee Emerita*
Gedale B. Horowitz, *Trustee Emeritus*
Helene L. Kaplan '53,
Trustee Emerita and Chair Emerita
Judith S. Kaye '58, *Trustee Emerita*
Constance Krueger '53, *Trustee Emerita*
Eugene R. McGrath, *Trustee Emeritus*
Patricia Nadosy '68, *Trustee Emerita*
Anna Quindlen '74,
Trustee Emerita and Chair Emerita
Mary Louise Reid '46, *Trustee Emerita*
Gayle F. Robinson '75, *Trustee Emerita*
Virginia B. Wright '51, *Trustee Emerita*

Representatives to the Board of Trustees

Faculty:

Christian Rojas, Dept. of Chemistry
Stephanie Pfirman, Dept. of Environmental Science

Students:

Verna Patti '11
Madalena Provo '12

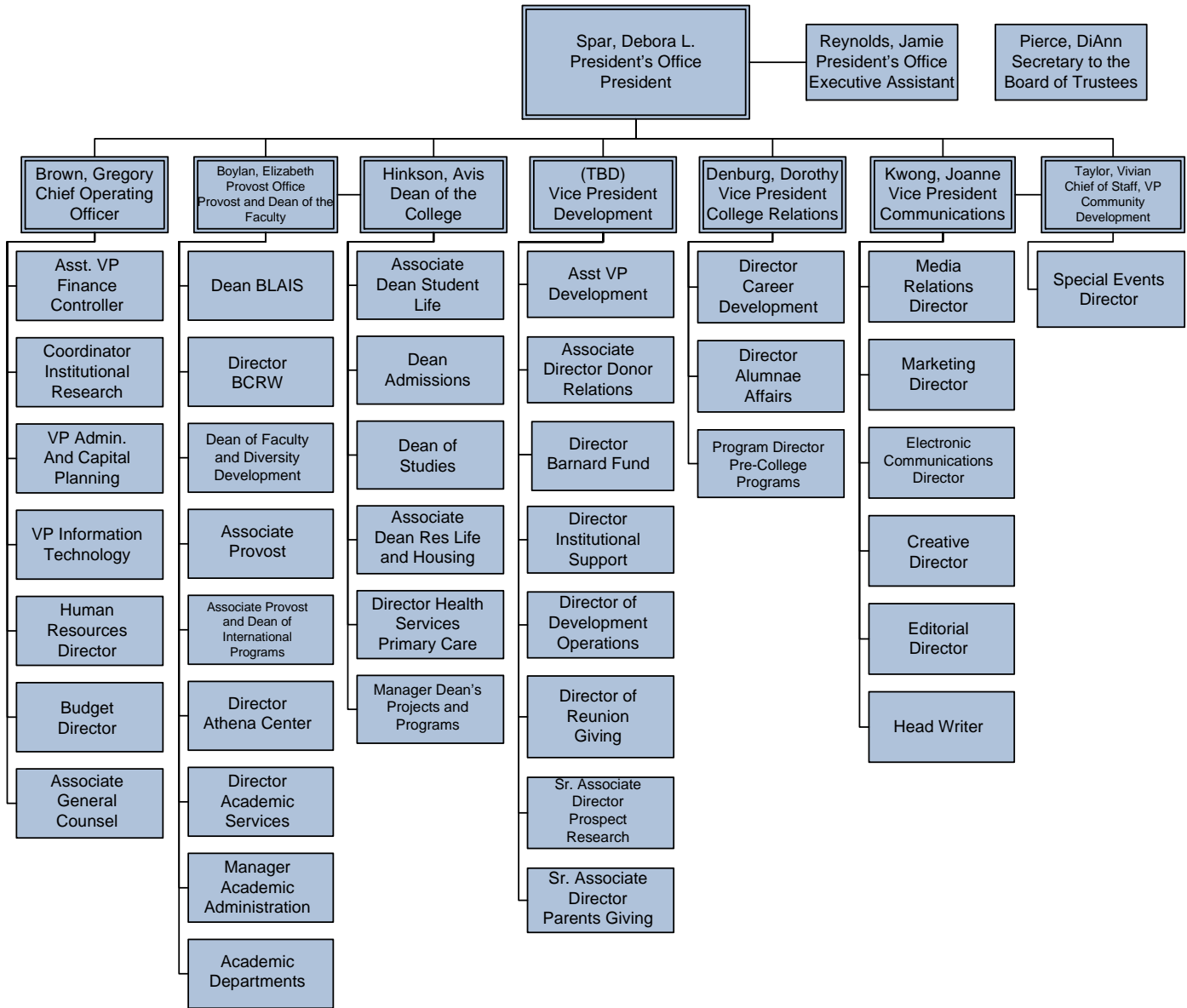
Standing Committees

Executive Committee
Committee on Budget and Finance
Committee on Investments
Committee on Governance
Committee on Compensation
Committee on Audits and Compliance

Committees of the College

Committee on Academic Affairs
Committee on Campus Life
Committee on Development
Committee on Diversity

College Organizational Chart and Governance



College Governance

Faculty Committees:

- Advisory Committee on Appointments, Tenure, and Promotion (ATP)
- Faculty Budget and Planning Committee (FBPC)
- Faculty Governance and Procedures Committee (FGP)
- Committee on Instruction (COI)
- Faculty Finance and Resource Committee (FFRC)
- Faculty Diversity and Development Committee (FDD)
- Grants Committee

Joint Governance:

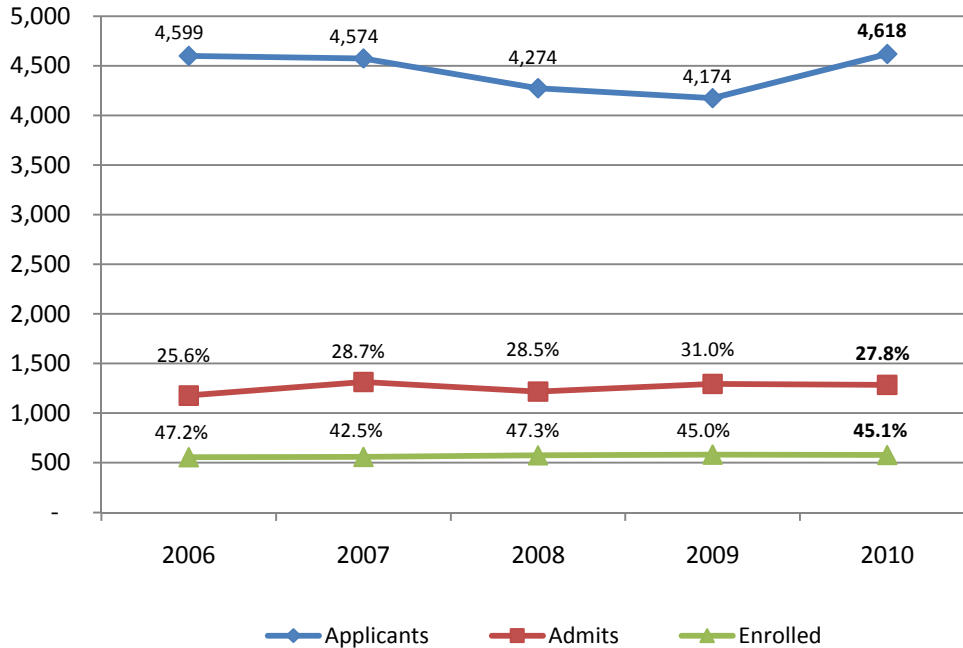
- Barnard Library and Academic Information Services Committee (BLAIS)
- Joint Faculty and Administrative Benefits Committee (JFAB)

Admissions

Admissions and Yield Trends

Class Admitted in:	Number of Applicants	Number Admitted	% Admitted	Number Enrolled	Yield
2010	4,618	1,285	27.8%	580	45.1%
2009	4,174	1,295	31.0%	583	45.0%
2008	4,274	1,218	28.5%	576	47.3%
2007	4,574	1,315	28.7%	559	42.5%
2006	4,599	1,177	25.6%	556	47.2%
2005	4,431	1,216	27.4%	572	47.0%
2004	4,380	1,201	27.4%	553	46.0%
2003	4,034	1,254	31.1%	554	44.2%
2002	3,686	1,269	34.4%	543	42.8%
2001	4,074	1,355	33.3%	541	39.9%

Admissions and Yield Trends



High School Performance and First-Year Student Ethnic Distribution

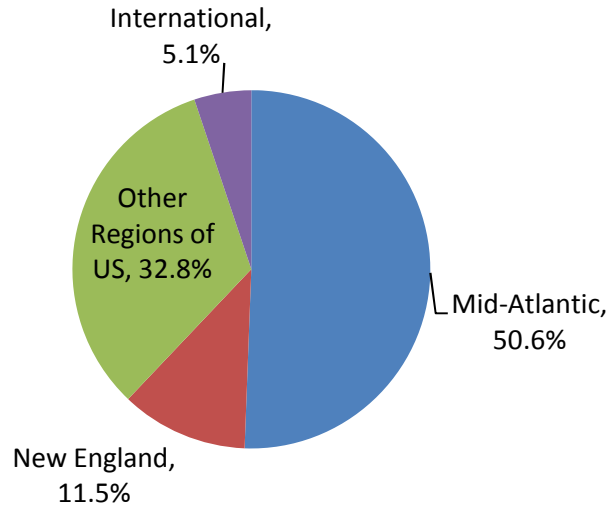
Class Admitted in:	Enrolled Median SATs			Total Median SAT Scores	Total Average SAT Scores	% in Top 10% of HS Class
	Verbal	Math	Writing			
2010	680	670	690	2040	2029	81%
2009	680	660	700	2050	2036	75%
2008	690	660	700	2050	2035	74%
2007	690	660	700	2050	2034	75%
2006	690	670	690	2050	2036	84%
2005	700	680	-	1380	1362	75%
2004	690	660	-	1350	1344	72%
2003	690	670	-	1360	1349	82%
2002	670	660	-	1330	1327	81%
2001	670	660	-	1330	1328	78%

Ethnic Distribution (%)

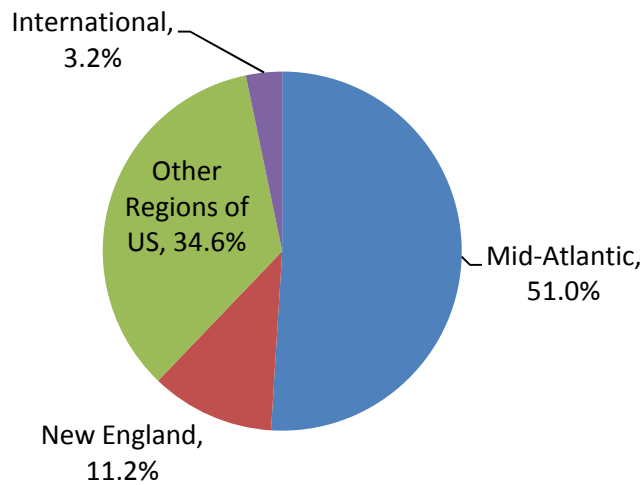
Ethnicity	Fall '06	Fall '07	Fall '08	Fall '09	Fall '10
Asian	18.2%	12.5%	16.0%	17.0%	18.7%
Black	3.4%	5.7%	4.3%	4.5%	5.0%
Hispanic	9.2%	8.8%	9.0%	8.9%	9.4%
Native Amer.	0.2%	0.2%	0.2%	0.0%	0.5%
White	65.8%	68.3%	66.7%	63.6%	61.2%
International	3.2%	4.5%	3.8%	6.0%	5.1%
Other/unk	0.0%	0.0%	0.0%	0.0%	0.0%
<i>Total</i>	100%	100%	100%	100%	100%
<i>Total # Enrolled</i>	556	559	576	583	580

First-Year Student Geographic Distribution

Geographic Distribution of First-Year Class, Fall '10



Geographic Distribution of First-Year Class, Fall '06



Early Decision, International, and Transfer Admissions and Yield Trends

Early Decision Admissions

Class Admitted in:	Number of Applicants	Number Admitted	% Admitted	Number Enrolled	Yield	% ED Students in First-year Class
2010	396	211	53.3%	193	91.5%	33.3%
2009	409	212	51.8%	182	85.8%	31.2%
2008	392	186	47.4%	158	84.9%	27.4%
2007 *	432	181	41.9%	149	82.3%	26.7%
2006	456	175	38.4%	172	98.3%	30.9%
2005	412	170	41.3%	169	99.4%	29.5%
2004	405	166	41.0%	166	100.0%	30.0%
2003	337	153	45.4%	152	99.3%	27.4%
2002	317	144	45.4%	141	97.9%	26.0%
2001	285	135	47.4%	133	98.5%	24.6%

* Policy change in 2007 allows Early Decision admits to defer their entrance

International Admissions

Class Admitted in:	Number of Applicants	Number Admitted	Number Enrolled
2010	495	82	33
2009	391	86	35
2008	376	56	22
2007	342	60	25
2006	266	41	17

Transfer Admissions

Class Admitted in:	Number of Applicants	Number Admitted	% Admitted	Number Enrolled	Yield
2010	534	112	21.0%	77	68.8%
2009	487	136	27.9%	79	58.1%
2008	480	114	23.8%	64	56.1%
2007	461	134	29.1%	80	59.7%
2006	467	119	25.5%	69	58.0%
2005	402	128	31.8%	68	53.1%
2004	407	159	39.1%	85	53.5%
2003	375	129	34.4%	81	62.8%
2002	414	144	34.8%	87	60.4%
2001	368	132	35.9%	67	50.8%

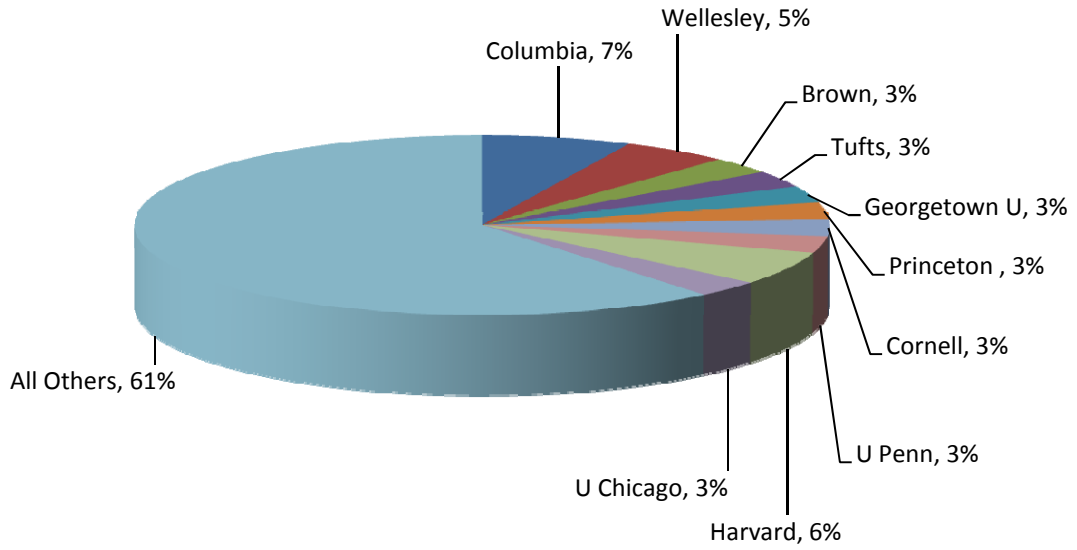
Cross-Admission Schools

Top 20 Cross-Admit Schools (2010 rank order)	Historical "Win Percentages"				2010 Top 20 Cross-Admit Schools' #'s
	2004	2006	2008	2010	
NYU	81%	75%	84%	90%	208
Boston U	98%	92%	100%	100%	142
Wellesley	46%	41%	36%	49%	141
Fordham	90%	92%	94%	87%	122
U Calif Berkeley	86%	59%	44%	55%	111
Tufts U	72%	76%	80%	57%	104
Brandeis U	92%	73%	82%	92%	102
Columbia	33%	22%	14%	16%	98
Cornell U	41%	60%	29%	25%	95
Vassar	61%	83%	41%	65%	92
U Michigan	-	-	84%	91%	81
Georgetown U	-	-	-	25%	76
U Penn	-	14%	-	35%	72
Johns Hopkins U	-	-	-	49%	72
Northwestern U	42%	64%	50%	53%	71
Wesleyan	-	47%	74%	37%	70
George Washington U	88%	100%	92%	91%	66
Bryn Mawr	-	-	71%	61%	65
U Calif Los Angeles	72%	76%	85%	61%	63
Mount Holyoke	-	-	-	56%	59
SUNY Binghamton	92%	100%	100%	-	-
Smith	80%	68%	79%	-	-
Boston C	68%	91%	88%	-	-
U Calif San Diego	-	-	100%	-	-

"Win Percentage" is the percentage that we enrolled of those students attending either our college or the listed college.

A dash, " - ", denotes that a school was not a Top 20 Cross-Admit school that year.

Where Barnard Loses Students, Based on 219 Responses to the 2010 Admitted Student Questionnaire



Various Published College Rankings/Guides

College Rankings (With Barnard's most recent ranking(s) & ranking methodology):

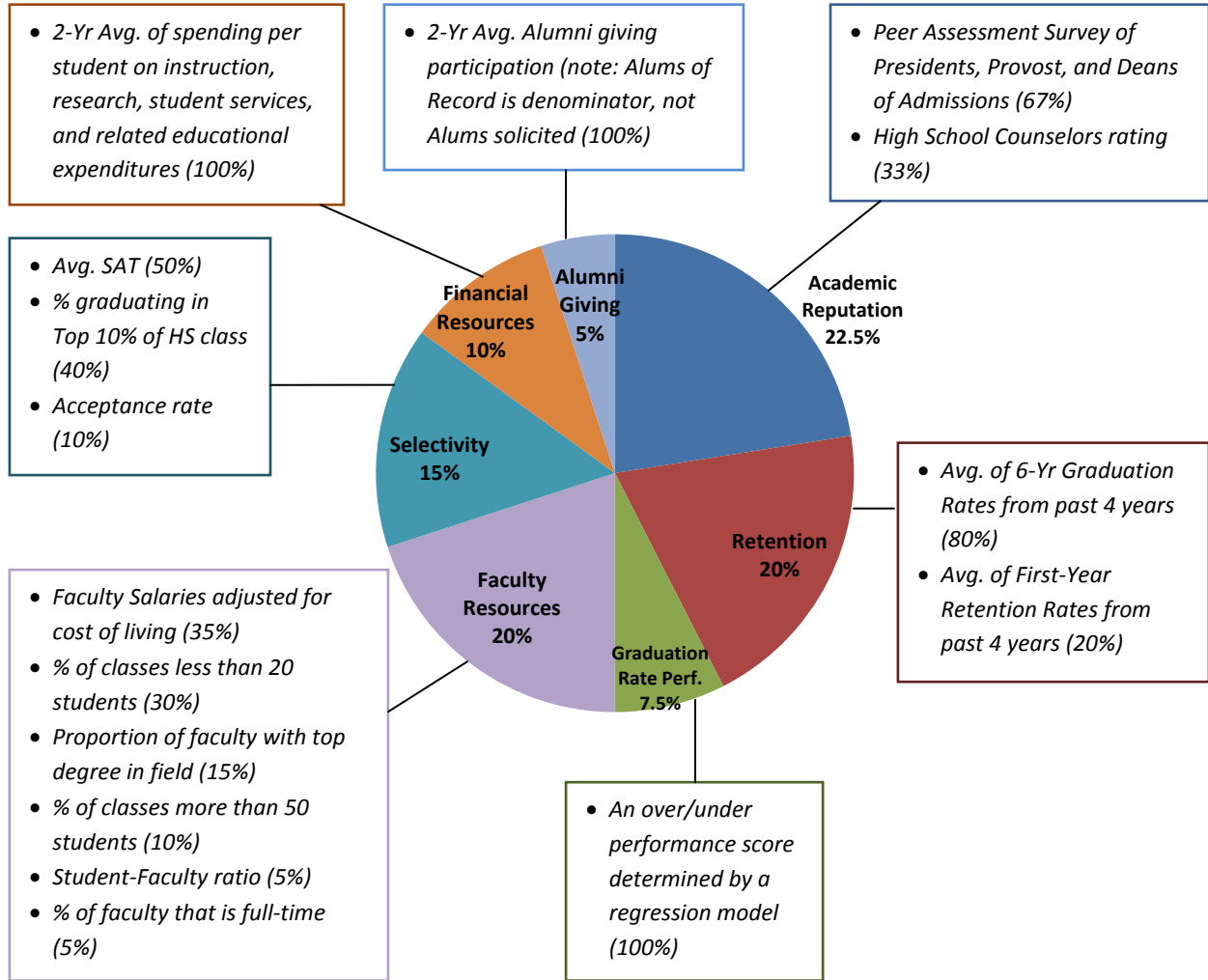
- **Forbes America's Best Colleges (#63)** – Ranking based on student satisfaction, academic success, graduation rates, graduate indebtedness, post-grad success
- **Kiplinger Best Values in Private Colleges (#35)** – Ranking based on selectivity, student-faculty ratio, graduation rates, total cost and financial aid programming, graduate indebtedness
- **Newsweek (#17 – Most Desirable Urban Schools; #20 – Most Desirable Small Schools)**
- **Parade Magazine's A-List** (Top 7 arts programs in the country, "Specialty: Theatre") – Ranking based on recommendations of 43 top high school guidance counselors
- **Princeton Review 371 Best Colleges** [#2 – Great College Towns; #5 – Best Career Services; #8 – Best Quality of Life; #9 – Easiest Campus to Get Around; #16 – Intercollegiate Sports Unpopular or Nonexistent; #16 – Nobody Plays Intramural Sports; #19 – Dodgeball Target (lack of participation in sports and Greek life on campus)]
- **US News Best Liberal Arts Colleges (#26)** – Ranking based on academic reputation, selectivity, student retention, graduation rate performance, faculty resources, financial resources, alumni giving
- **Washington Monthly (#67 – Liberal Arts College)** – Ranking based on selectivity, % of students receiving Pell Grants, student-faculty ratio, retention/graduation rates, research spending, prestigious awards/scholarships to students/faculty/alumni, Army/Navy ROTC size, alumni serving in the Peace Corps

General College Guides without rankings:

- **Barron's Guide to the Most Competitive College**
- **The College Board**
- **Fiske College Guide**
- **Peterson's Guide**
- **Unigo.com**

2011 US News Rankings Criteria:

(Liberal Arts Colleges)



US New Rankings History: See next 2 pages →

US News Rankings History

US New Rankings History (*Liberal Arts Colleges*)

School	1996	1997	1998	1999	2000	2001	2002	2003	2004	2005	2006
Williams College	2	3	3	3	3	3	3	2	1	1	1
Amherst College	1	2	2	1	2	1	1	1	2	2	2
Swarthmore College	2	1	1	2	1	2	1	2	3	2	3
Wellesley College	5	4	3	4	4	4	4	4	4	4	4
Middlebury College	7	7	8	7	5	6	9	7	7	11	8
Pomona College	8	5	5	5	7	5	5	5	4	5	6
Bowdoin College	4	8	8	7	9	6	5	7	10	7	6
Carleton College	11	9	7	9	8	6	5	5	4	5	5
Haverford College	5	6	6	5	5	6	5	10	9	9	8
Davidson College	21	11	8	11	11	11	10	9	7	7	10
Claremont McKenna	16	15	8	15	14	14	17	13	12	13	10
Wesleyan	12	14	14	9	10	10	11	11	11	9	12
Vassar College	13	17	17	17	17	16	14	15	14	12	13
Smith College	10	12	14	11	13	12	14	13	15	13	19
Washington & Lee U	15	13	8	11	14	12	13	15	12	13	14
Grinnell College	14	16	14	11	11	14	11	12	15	16	15
Harvey Mudd							14	15	17	16	18
Hamilton College	23	25	22	21	18	21	20	18	21	19	15
Colgate University	17	20	20	21	18	18	17	18	17	16	15
Bates College	18	22	20	19	23	19	22	22	23	22	21
Oberlin College	22	24	22	24	25	23	22	23	24	23	23
Colby College	19	18	18	17	18	19	20	18	17	19	20
Scripps College	37	36	37	39	35	37	33	29	34	26	27
Mount Holyoke	19	19	18	19	16	21	24	23	25	24	23
Barnard College	32	23	27	24	25	29	28	28	38	29	27
Colorado College	28	28	31	24	25	29	28	29	27	33	27
Macalester College	34	32	25	24	24	25	26	26	25	26	25
Bryn Mawr College	9	10	8	15	18	16	17	21	17	21	21
Bucknell University	30	31	27	31	30	27	28	29	27	26	27
Coll. of the Holy Cross	26	27	25	30	30	29	32	26	27	31	32
Sewanee	27	29	27	24	25	25	28	29	33	33	34
Kenyon College	36	33	31	31	32	29	33	29	30	29	32
Trinity College	23	21	22	23	22	23	24	25	22	24	25
Occidental College	39	38	33	36	40	39	44	44	40	42	41
Lafayette College	33	39	37	33	33	36	33	29	30	31	27
Connecticut College	25	26	27	24	25	27	26	29	34	35	36
Franklin & Marshall	29	34	33	33	35	33	36	36	38	38	39
Centre College			40			42	42	44	45	42	41

US News Rankings History

US News Rankings History (*Liberal Arts Colleges*)

School	2007	2008	2009	2010	2011	5-Yr High	5-Yr Low	Current
Williams College	1	1	1	1	1	1	1	1
Amherst College	2	2	1	2	2	1	2	2
Swarthmore College	3	3	3	3	3	3	3	3
Wellesley College	4	4	4	4	4	4	4	4
Middlebury College	5	5	5	4	4	4	5	4
Pomona College	7	7	6	6	6	6	7	6
Bowdoin College	7	7	6	6	6	6	7	6
Carleton College	6	5	8	8	8	5	8	8
Haverford College	9	10	10	10	9	9	10	9
Davidson College	10	9	9	8	9	8	10	9
Claremont McKenna	12	11	11	11	11	11	12	11
Wesleyan	10	11	13	13	12	10	13	12
Vassar College	12	11	11	11	12	11	12	12
Smith College	19	17	18	18	14	14	19	14
Washington & Lee U	17	15	17	14	14	14	17	14
Grinnell College	14	11	14	14	18	11	18	18
Harvey Mudd	14	15	14	14	18	14	18	18
Hamilton College	17	17	20	21	18	17	21	18
Colgate University	16	17	18	19	21	16	21	21
Bates College	23	24	25	25	21	21	25	21
Oberlin College	22	20	20	22	23	20	23	23
Colby College	20	22	23	22	23	20	23	23
Scripps College	26	28	27	25	23	23	28	23
Mount Holyoke	24	28	27	25	26	24	28	26
Barnard College	26	30	27	30	26	26	30	26
Colorado College	26	26	30	24	26	24	30	26
Macalester College	24	26	25	29	26	24	29	26
Bryn Mawr College	20	24	23	25	30	20	30	30
Bucknell University	29	30	30	30	30	29	30	30
Coll. of the Holy Cross	32	33	35	36	32	32	36	32
Sewanee	34	40	41	36	32	32	41	32
Kenyon College	32	32	32	33	32	32	33	32
Trinity College	30	34	33	36	36	30	36	36
Occidental College	36	36	37	33	36	33	37	36
Lafayette College	30	34	35	35	38	30	38	38
Connecticut College	39	44	42	42	41	39	44	41
Franklin & Marshall	41	40	42	43	41	40	43	41
Centre College	44	44	45	46	47	44	47	47

[THIS PAGE INTENTIONALLY LEFT BLANK]

Students

Undergraduate Enrollment and Ethnic Distribution; Visiting International Students Program Enrollment

Academic Year	Full-Time	Part-Time	Total Enrollment	Total FTE *
2010-11	2,390	66	2,456	2,412
2009-10	2,356	61	2,417	2,376
2008-09	2,302	57	2,359	2,321
2007-08	2,295	51	2,346	2,312
2006-07	2,300	50	2,350	2,317
2005-06	2,296	60	2,356	2,316
2004-05	2,235	52	2,287	2,252
2003-04	2,232	49	2,281	2,248
2002-03	2,244	53	2,297	2,262
2001-02	2,213	48	2,261	2,229

* Common Data Set Definition of FTE Enrollment - [(1*FT enrollment)+(1/3*PT enrollment)]

Ethnic Distribution (%)

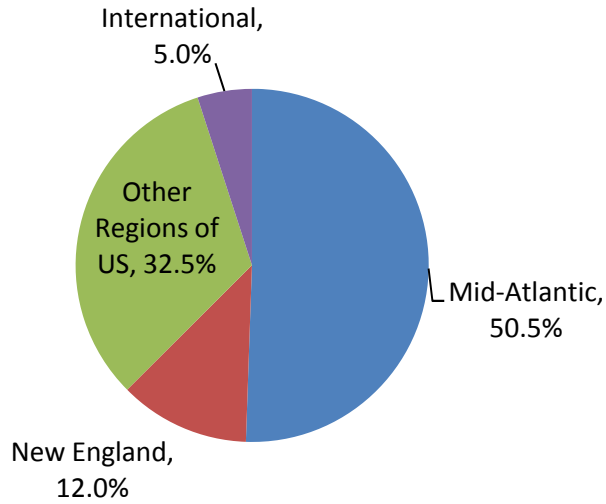
Ethnicity	2006-07	2007-08	2008-09	2009-10	2010-11
Asian	17.6%	16.1%	15.9%	16.0%	16.1%
Black	4.5%	4.9%	4.6%	4.2%	4.3%
Hispanic	8.2%	8.6%	8.7%	8.7%	8.9%
Native Amer.	0.4%	0.3%	0.2%	0.2%	0.2%
White	66.3%	66.4%	66.6%	65.9%	64.8%
International	3.0%	3.7%	4.0%	4.6%	5.0%
Other/unk	0.0%	0.0%	0.0%	0.4%	0.7%
<i>Total</i>	100%	100%	100%	100%	100%
<i>Total # Enrolled</i>	2,350	2,346	2,359	2,417	2,456

Visiting International Students Program (VISP)

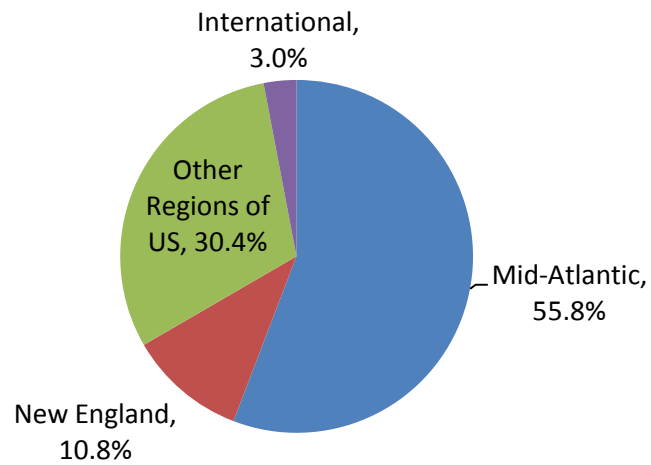
	2006-07	2007-08	2008-09	2009-10	2010-11
VISP Enrollment	1	3	9	41	59

Undergraduate Geographic Distribution

Total Enrollment by Geographic Region, 2010-11

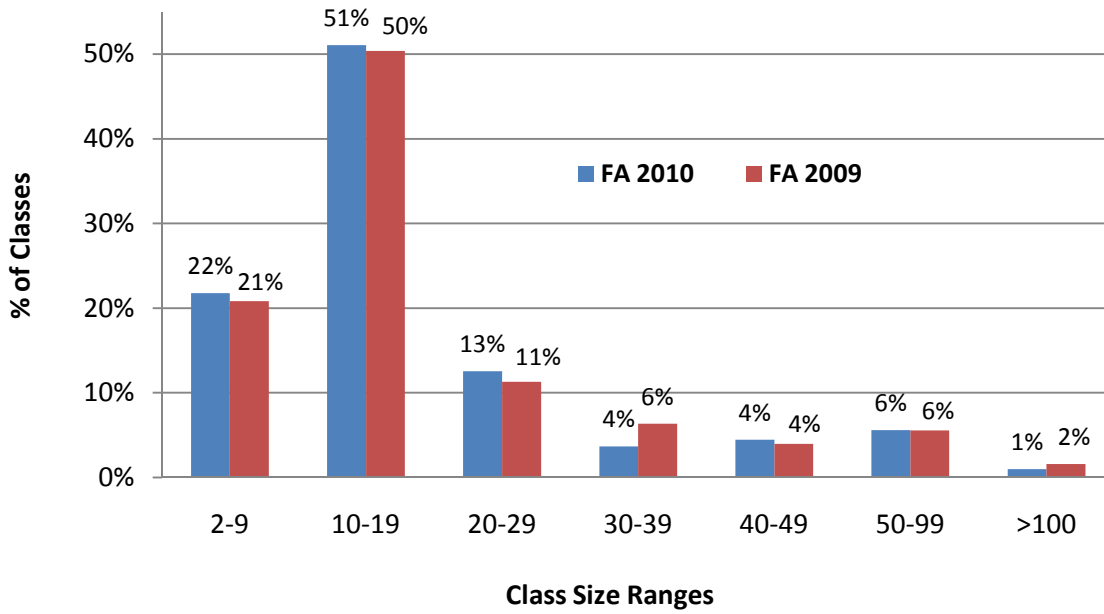


Total Enrollment by Geographic Region, 2006-07



Class Sizes

Class Section Sizes, Fall 2010 and Fall 2009



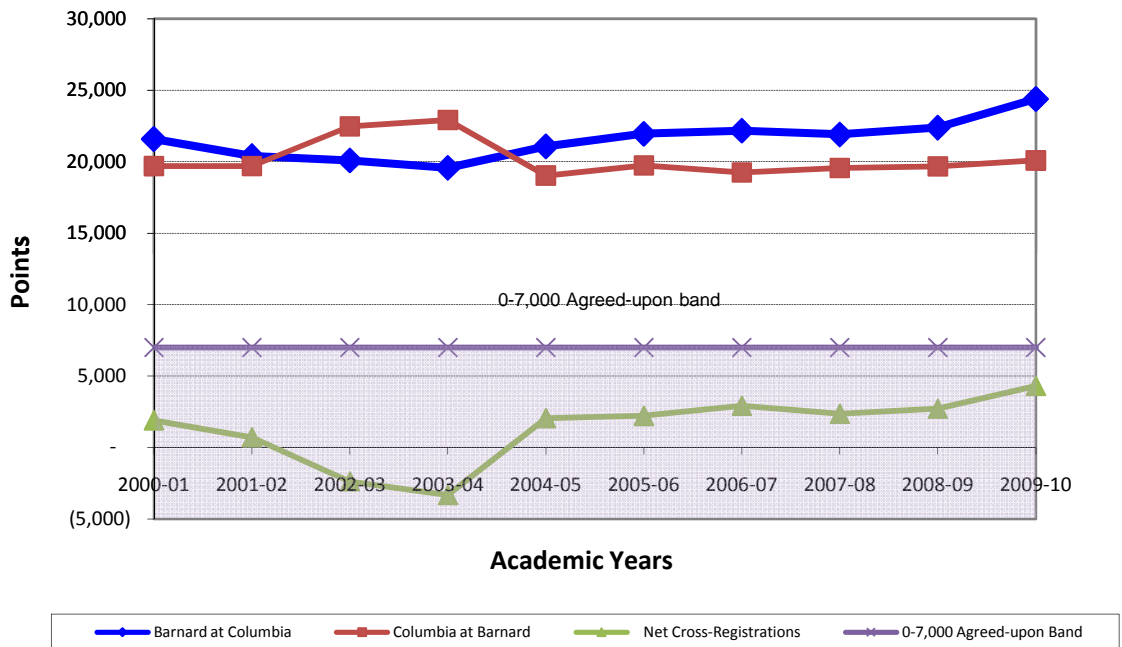
Students per Class	2-9	10-19	20-29	30-39	40-49	50-99	>100
Three-year Avg.	22%	50%	12%	5%	4%	6%	2%

Barnard-Columbia Partnership and Cross-Registration Trends

Barnard College is an independent affiliate of Columbia University. The relationship provides benefits for both institutions.

- Cross-registration for undergraduate and graduate level courses at both institutions
- Mutual access to libraries, athletic facilities, student activities
- Participation by Barnard athletes in Columbia's Division I athletic programs
- Barnard Faculty have access to various Columbia apartments
- Barnard College students receive a Columbia University degree

Change in Cross-Registrations 2000-01 through 2009-10



Graduated Majors

DIVISION	MAJOR DEPARTMENT	2006-07	2007-08	2008-09	2009-10	2010-11 Est.
ARTS	Architecture*	10	12	13.5	14.5	7
	Dance*	6.5	5.5	5	5	2.5
	Film Studies	10.5	8	8.5	8.5	8.5
	Music**	6	9.5	9.5	3	4
	Theatre*	8.5	9	9.5	9.5	10.5
ARTS Total		41.5	44	46	40.5	32.5
HUMANITIES	Art History	33	38	46	23.5	40.5
	Asian&Middle East Cultures	20	16.5	12	15	17
	English	66.75	59.75	79.75	87.5	75.5
	Philosophy	4	8	4.5	8	13
	Religion	4	6.5	7.5	5	8
	Women's Studies	8.5	5.5	10.5	9.5	4.5
HUMANITIES Total		136.25	134.25	160.25	148.5	158.5
LANGUAGE/ LIT	Classics	7	2.75	1	5	2.5
	Comparative Literature	<i>Comp. Lit majors are counted in Language departments</i>				
	French	9.5	3.75	6.25	13	16.5
	German	1.5	0.25	1.5	1.5	3.5
	Italian	0	3	0.5	3	1
	Linguistics	0	0	0	1	1
	Slavic	6.25	2	3	4.5	6
	Spanish/LA Cultures	11.5	8	11	5	4.5
LANGUAGE/LIT Total		35.75	19.75	23.25	33	35
OTHER	Special	3.5	1.5	2	7	1
OTHER Total		3.5	1.5	2	7	1
SCIENCE	Biology	28	26	57	34.5	31.25
	Chemistry	12	21.5	12	9	12.5
	Computer Science**	0	1.5	0	2	2.5
	Environmental Science	9.5	7	5.5	15.75	7.5
	Mathematics	11.75	10.25	7.25	6	9.5
	Physics and Astronomy	4.5	2.5	2	6	6
	Psychology	89	79.5	63.5	73.25	78.75
	Statistics**	0.5	1.75	1	1	0.5
SCIENCE Total		155.25	150	148.25	147.5	148.5
SOCIAL SCIENCE	Africana Studies	5.5	4	7	3.5	3.5
	American Studies	31	20	22	13.5	12.5
	Anthropology	25.5	14.5	25	29.5	19.5
	Economics	53.5	50.75	58.25	76.5	53.25
	Foreign Area Studies	1.5	4.5	3	1	0.5
	History	36.25	49.25	43.5	27.5	45.25
	Political Science	42.5	52	52	55	54
	Sociology	13.5	7.5	15.5	13	13
	Urban Studies*	15.5	21	27	20	17
	European Studies	0	0	0	1	0
SOCIAL SCIENCE Total		224.75	223.5	253.25	240.5	218.5
Grand Total		597	573	633	617	594

* Barnard based major - does not include Columbia majors

** Wholly at Columbia

Graduated Majors Credited to More Than One Department

Majors credited to more than one department

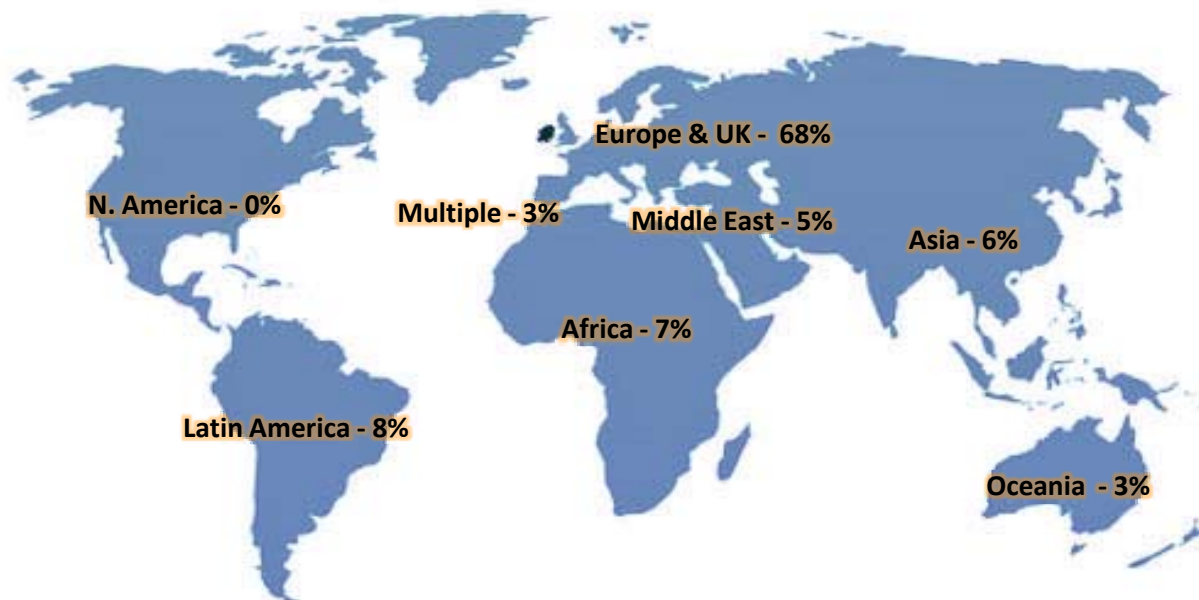
(In the "Graduated Majors by Division and Department" table (preceding page), each student is credited as .5 to each department for Environmental Biology, Neuroscience & Behavior, Economics and Math, and Economic History. For Comp Lit, the "Graduated Majors by Division and Department" table credits .5 to each language department, but displays 0 under Comp Lit)

MAJOR DEPT(S)	MAJOR	2006-07	2007-08	2008-09	2009-10	2010-11 Est.
Biology, Env Science	Environmental Biology	1	2	1	4.5	2
Biology, Environmental Science Total		1	2	1	4.5	2
Biology, Psychology	Neuroscience & Behavior	23	14	31	26.5	25
Biology, Psychology Total		23	14	31	26.5	25
Comparative Literature	CmpLit:Chinese/English		1			
	CmpLit:Dutch/French			1		
	CmpLit:English/French	0.5	0.5	3.5	2	4
	CmpLit:English/German				1	1
	CmpLit:English/Hebrew			1		
	CmpLit:English/Italian					
	CmpLit:English/Russian	1	1		1	
	CmpLit:English/Spanish	1	1	2	2	
	CmpLit:French/German					1
	CmpLit:French/Italian			1		
	CmpLit:French/Latin					
	CmpLit:French/Persian					
	CmpLit:French/Polish	0.5				
	CmpLit:French/Russian	1				1
	CmpLit:French/Spanish			1		2
	CmpLit:Italian/Latin		1			
	CmpLit:Latin/German		0.5			
Comparative Literature Total		4	5	9.5	6	9
Economics, History	Economic History	0.5	7.5	7	4.5	6.5
Economics, History Total		0.5	7.5	7	4.5	6.5
Economics, Mathematics	Economics and Math	7.5	14	3.25	5	4.5
Economics, Mathematics Total		7.5	14	3.25	5	4.5
Mathematics, Statistics	Math and Statistics			2		
Mathematics, Statistics Total		0	0	2	0	0
Grand Total		36	42.5	53.75	46.5	47

Study Abroad Leaves and Destinations

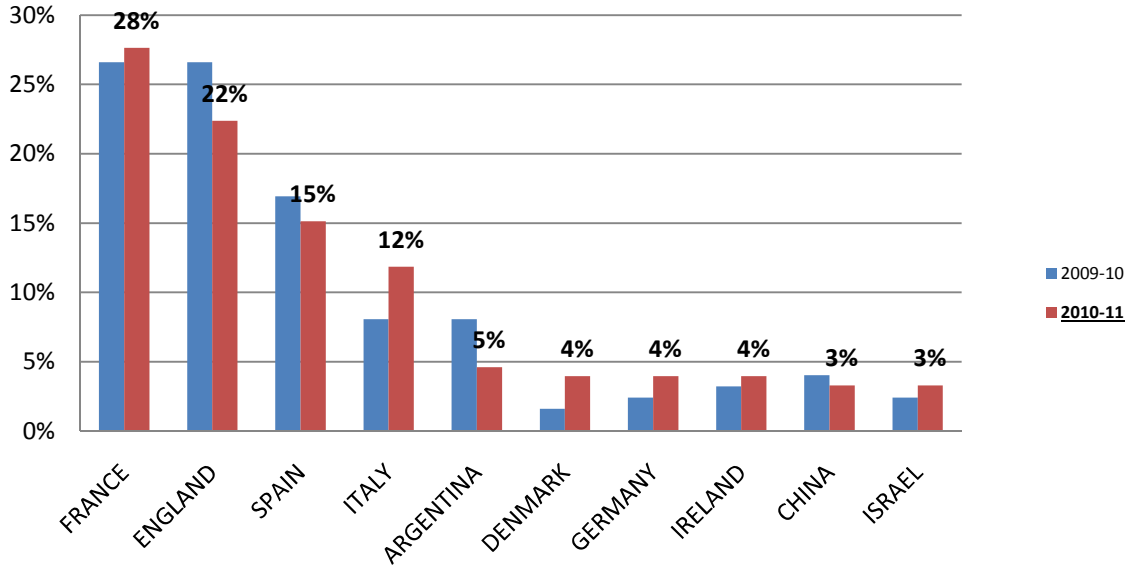
Academic Year	Total Study Abroad Leaves			Total
	Fall	Spring	Full Year	
2010-11	43	152	23	218
2009-10	28	129	26	183
2008-09	52	132	19	203
2007-08	52	142	19	213
2006-07	40	127	18	185
2005-06	36	104	23	163
2004-05	54	87	41	182
2003-04	40	113	41	194
2002-03	43	71	21	135
2001-02	45	91	45	181

Study Abroad Destinations by Region, 2010-11



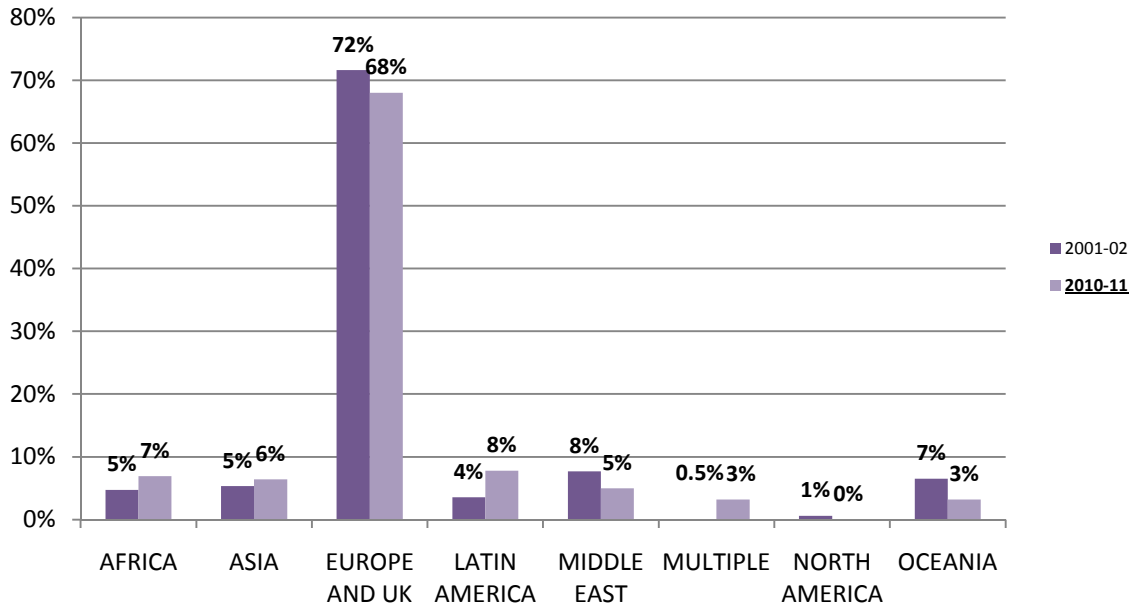
Study Abroad Destinations

Study Abroad by Country, Top 10 Destinations in 2010-11



* This data is representative of 152 out of 218 students studying abroad in 2010-11

Historical Study Abroad, by Region



Graduation and Retention Rates

Ethnicity	Entering Cohort - 2002				Entering Cohort - 2003			
	<u>Initial Total #</u>	First-Yr Student Retention Rate	4-yr Grad Rate	6-yr Grad Rate	<u>Initial Total #</u>	First-Yr Student Retention Rate	4-yr Grad Rate	6-yr Grad Rate
Asian	84	94%	80%	90%	92	98%	87%	92%
Black	22	86%	50%	73%	26	100%	73%	88%
Hawaiian	-	-	-	-	6	100%	83%	83%
Hispanic	32	91%	69%	78%	34	97%	68%	79%
Native Amer	4	100%	100%	100%	4	100%	100%	100%
White	372	93%	85%	89%	365	95%	84%	90%
Foreign	19	89%	79%	79%	15	93%	73%	87%
Total Cohort	533	93%	81%	88%	542	96%	83%	90%

Ethnicity	Entering Cohort - 2004			
	<u>Initial Total #</u>	First-Yr Student Retention Rate	4-yr Grad Rate	6-yr Grad Rate
Asian	88	98%	84%	92%
Black	26	96%	69%	81%
Hawaiian	4	100%	100%	100%
Hispanic	48	96%	69%	83%
Native Amer	3	33%	33%	33%
White	360	94%	79%	88%
Foreign	17	94%	71%	76%
Total Cohort	546	94%	78%	87%

<i>All Ethnicities</i>	
Entering Cohort	First-Yr Student Retention Rate
2009	94%
2008	93%
2007	94%
2006	95%
2005	96%

Student Awards

Student Awards

	2005-06	2006-07	2007-08	2008-09	2009-10
Beinecke	1	0	0	0	1
Fulbright	6	3	2	7	3
Goldman Sachs Global Leaders	1	1	0	1	0
Goldwater	0	1	1	0	2
Jack Kent Cooke	1	0	1	0	N/A
Luce	1	0	0	0	0
Marshall	0	0	0	0	0
Rhodes	0	0	0	0	0
Truman	0	0	1	0	0

Top 10 Graduated Majors and Post-Graduation Plans of Seniors

Top 10 Graduated Majors, Class of 2010

1. English (88)
2. Economics (77)
3. Psychology (73)
4. Political Science (55)
5. Biology (35)
6. Anthropology (30)
7. History (28)
8. Art History (24)
9. Urban Studies (20)
10. Environmental Science (16)

[617 Graduates in Class of '10 (Top 10 graduated majors represents 72% of the class)]

Post-graduate Plans - 2010 Senior Survey	%
Full-time Employment	54%
Part-time Employment	19%
Further Study	26%
Volunteer Activities	10%
Travel	16%
Undecided	21%
Other Activities	8%

Activities do not equal 100% because the 2010 Senior Survey allowed for seniors to select more than 1 activity

Employment Sectors of 2010 Seniors (& past years' comparison)

Job Sector	2006 Seniors	2008 Seniors	2010 Seniors	Change from 2008 to 2010
	% of Respondents	% of Respondents	% of Respondents	
Non-profit agency or NGO	10%	12%	20%	9%
Education	19%	13%	16%	3%
Communications, media or the arts	12%	7%	15%	8%
Other	10%	12%	15%	3%
Health or medicine	19%	18%	9%	-9%
Law	10%	9%	7%	-2%
Financial services	9%	17%	5%	-12%
Government	3%	4%	4%	0%
Consulting	3%	3%	2%	-1%
Business (other)	1%	2%	2%	0%
Sales and marketing	2%	3%	2%	-1%
Sports, hopsitality, recreation	1%	0%	1%	1%
Engineering	0%	0%	0.5%	0%
Information technology	1%	1%	0.5%	0%

Faculty

Faculty Counts, % Full-Time Minority, Student-Faculty Ratio

Academic Year	Full-Time Headcount	Part-Time Headcount	Total Headcount	Total FTE *	% Minority Full-Time Faculty	Student: Faculty Ratio**
2010-11	208	153	361	259	18%	9.3
2009-10	208	141	349	255	19%	9.3
2008-09	204	136	340	249	14%	9.3
2007-08	198	127	325	240	18%	9.6
2006-07	201	123	324	242	16%	9.6
2005-06	193	126	319	235	15%	9.9
2004-05	183	113	296	221	14%	10.2
2003-04	186	107	293	222	12%	10.1
2002-03	185	107	292	221	14%	10.2
2001-02	183	110	293	220	13%	10.1

* Common Data Set Definition of FTE Faculty - $[(1*FT\ Faculty)+(1/3*PT\ Faculty)]$

** Student:Faculty Ratio based on FTE students and FTE faculty

Academic Year	Full-Time %	Part-Time %	Total %
2010-11	58%	42%	100%
2009-10	60%	40%	100%
2008-09	60%	40%	100%
2007-08	61%	39%	100%
2006-07	62%	38%	100%
2005-06	61%	39%	100%
2004-05	62%	38%	100%
2003-04	63%	37%	100%
2002-03	63%	37%	100%
2001-02	62%	38%	100%

Full-Time Faculty by Division and Department

DIVISION	DEPARTMENT	2006-07		2007-08		2008-09		2009-10		2010-11	
		# of Fac.	% of FT Fac.	# of Fac.	% of FT Fac.	# of Fac.	% of FT Fac.	# of Fac.	% of FT Fac.	# of Fac.	% of FT Fac.
ARTS	Architecture	3		3		3		3		3	
	Dance	5		6		6		6		5	
	Music	1		1		1		1		1	
	Theatre	4		4		5		3		5	
ARTS Total		13	6%	14	7%	15	7%	13	6%	14	7%
HUMANITIES	Art History	6		6		7		7		7	
	Asian&Middle East Cultures	5		4		5		6		6	
	English	23		21		22		22		23	
	Philosophy	5		5		5		5		5	
	Religion	5		5		5		4		5	
	Women's Studies	5		4		4		4		5	
HUMANITIES Total		49	24%	45	23%	48	24%	48	23%	51	25%
LANGUAGE/LIT	Classics	3		4		4		4		4	
	French	10		11		11		12		12	
	German, Italian	5		4		5		4		3	
	Slavic	4		3		3		3		3	
	Spanish/LA Cultures	10		10		11		9		10	
LANGUAGE/LIT Total		32	16%	32	16%	34	17%	32	15%	32	15%
OTHER	Physical Education	6		6		6		6		6	
	Education	2		2		2		2		2	
OTHER Total		8	4%	8	4%	8	4%	8	4%	8	4%
SCIENCE	Biology	11		8		9		10		10	
	Chemistry	10		11		10		12		12	
	Environmental Science	6		6		6		6		6	
	Mathematics	4		5		5		5		5	
	Physics and Astronomy	6		6		5		5		5	
	Psychology	13		13		13		16		15	
SCIENCE Total		50	25%	49	25%	48	24%	54	26%	53	25%
SOCIAL SCIENCE	Africana Studies	-		1		-		1		-	
	Anthropology	7		6		6		9		6	
	Economics	13		11		12		12		11	
	History	14		17		16		15		16	
	Political Science	10		10		12		12		12	
	Sociology	4		4		4		4		5	
	Urban Studies	1		1		1		-		-	
SOCIAL SCIENCE Total		49	24%	50	25%	51	25%	53	25%	50	24%
Full-Time Faculty		201	100%	198	100%	204	100%	208	100%	208	100%
Part-Time Faculty		123		127		136		141		153	
Total Faculty		324		325		340		349		361	

Full-Time Faculty by Rank, Gender, Ethnicity and Tenured Faculty Data

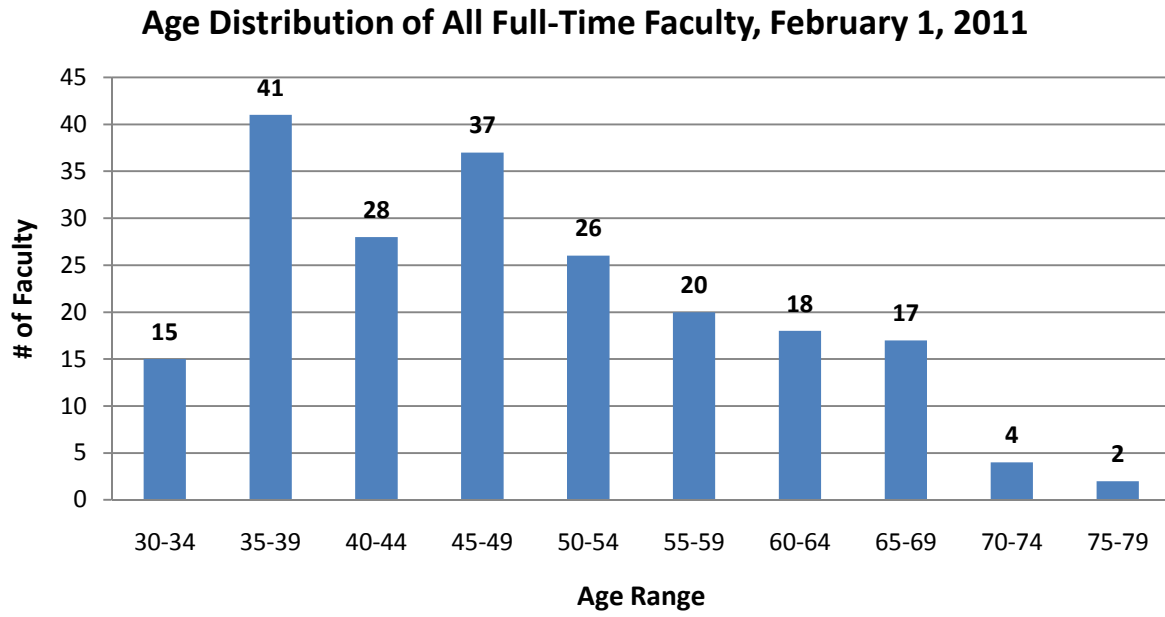
All Full-Time Faculty, 2010-11

	Total	By Gender		By Ethnicity & Race				
		Women	Men	Intr'l	Hispanic	White	Black	Asian
On Ladder	143	75	68	5	7	114	5	12
Professor	66	29	37	-	4	56	1	5
Associate Professor	30	18	12	1	-	23	3	3
Assistant Professor	47	28	19	4	3	35	1	4
Off Ladder	65	49	16	9	1	43	6	6
Associates (incl. Senior)	16	11	5	3	-	11	1	1
Instructors	-	-	-	-	-	-	-	-
Lecturer (incl. Senior)	26	20	6	4	-	18	2	2
Other *	23	18	5	2	1	14	3	3
Total Full-Time Faculty	208	124	84	14	8	157	11	18

* (includes Term Professor, Term Associate Professor, Term Assistant Professor, and Professor/Assoc Professor of Professional Practice appointments)

Academic Year	Tenured Faculty			% Female Tenured	% Minority Tenured
	Women	Men	Total		
2010-11	47	49	96	49%	17%
2009-10	43	50	93	46%	14%
2008-09	41	47	88	47%	13%
2007-08	37	45	82	45%	13%
2006-07	32	44	76	42%	14%
2005-06	30	43	73	41%	11%
2004-05	31	43	74	42%	9%
2003-04	33	42	75	44%	9%
2002-03	24	38	62	39%	8%
2001-02	24	39	63	38%	6%

Full-Time Faculty Age Distribution



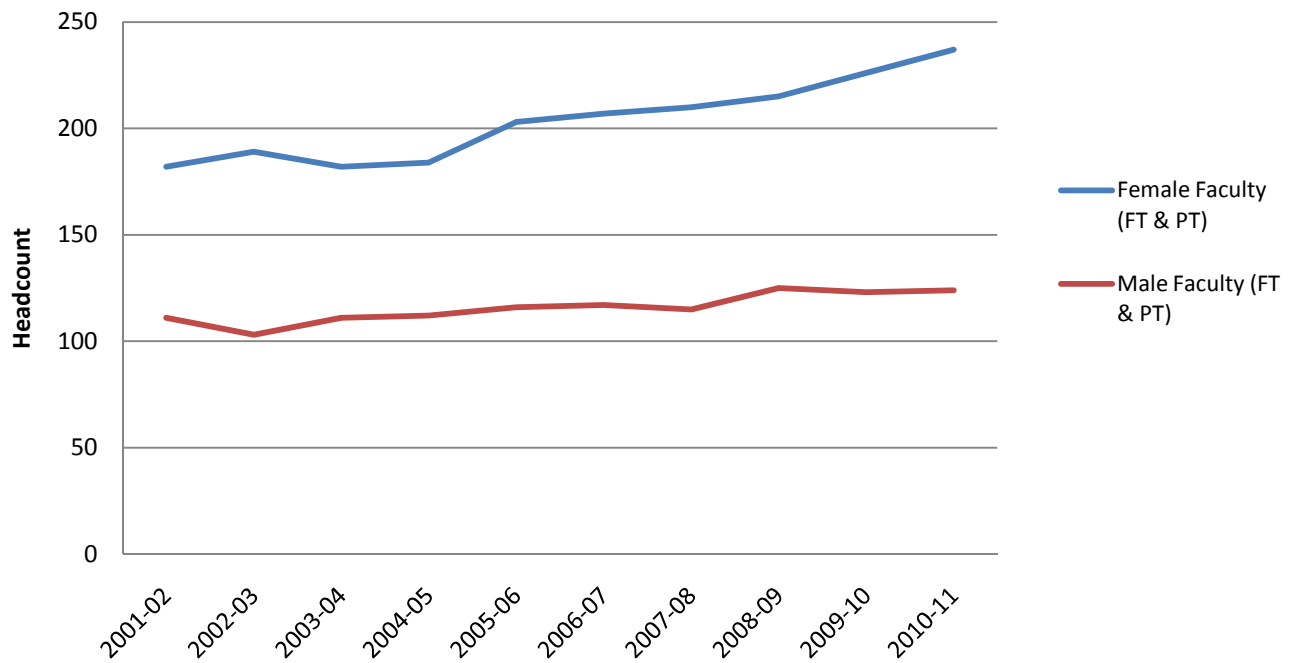
Full-Time and Part-Time Faculty by Gender

Academic Year	Full-Time Faculty				
	Women		Men		Total
	#	%	#	%	
2010-11	124	60%	84	40%	208
2009-10	121	58%	87	42%	208
2008-09	120	59%	84	41%	204
2007-08	120	61%	78	39%	198
2006-07	119	59%	82	41%	201
2005-06	112	58%	81	42%	193
2004-05	105	57%	78	43%	183
2003-04	109	59%	77	41%	186
2002-03	111	60%	74	40%	185
2001-02	106	58%	77	42%	183

Academic Year	Part-Time Faculty				
	Women		Men		Total
	#	%	#	%	
2010-11	113	74%	40	26%	153
2009-10	105	74%	36	26%	141
2008-09	95	70%	41	30%	136
2007-08	90	71%	37	29%	127
2006-07	88	72%	35	28%	123
2005-06	91	72%	35	28%	126
2004-05	79	70%	34	30%	113
2003-04	73	68%	34	32%	107
2002-03	78	73%	29	27%	107
2001-02	76	69%	34	31%	110

Total Faculty by Gender, Full-Time Faculty by Rank and Gender

Total Faculty by Gender, 2001-02 to 2010-11

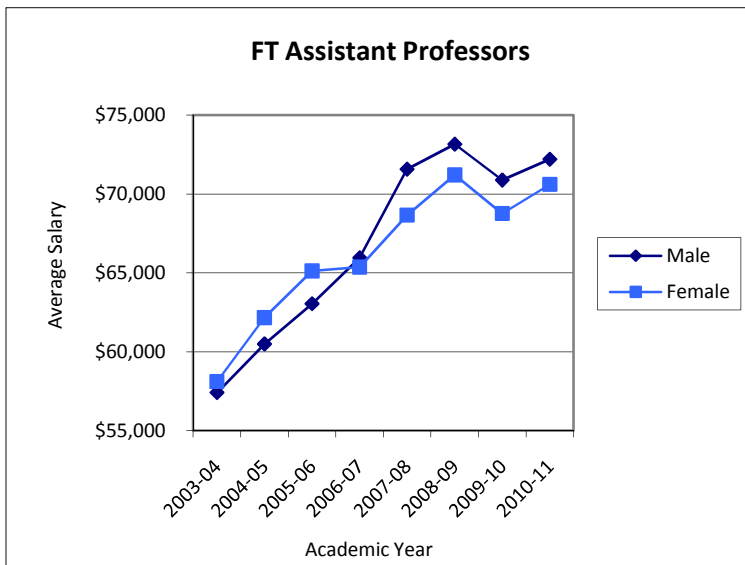
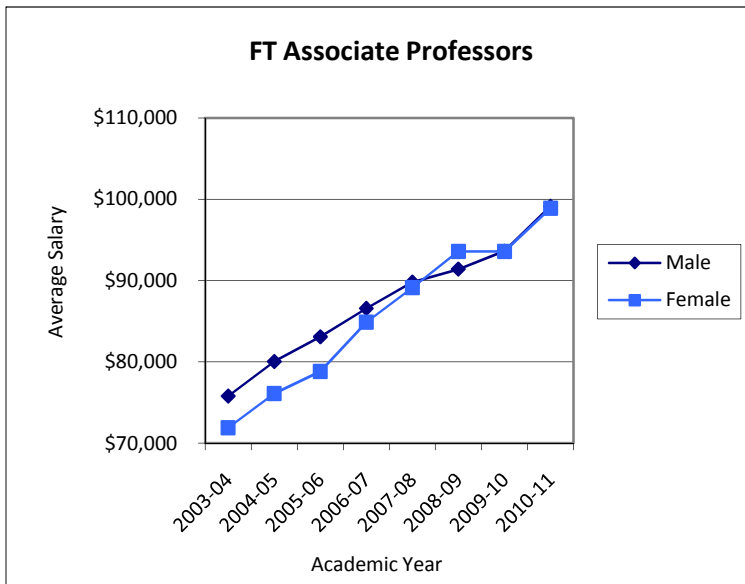
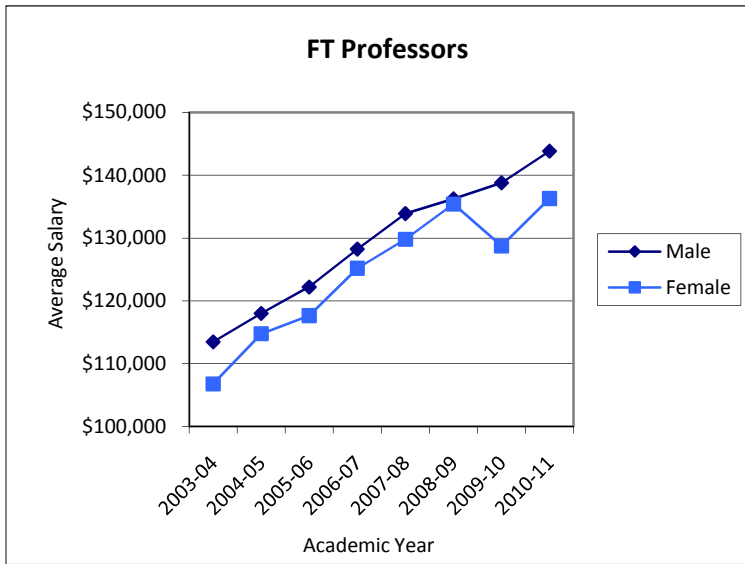


Full-Time Faculty by Rank and Gender

Rank	2006-07			2007-08			2008-09			2009-10			2010-11		
	Sex			Sex			Sex			Sex			Sex		
	# F	# M	% F	# F	# M	% F	# F	# M	% F	# F	# M	% F	# F	# M	% F
Professor	25	31	45%	27	32	46%	29	39	43%	33	38	46%	35	38	48%
Associate Professor	16	16	50%	15	16	48%	16	16	50%	15	15	50%	19	13	59%
Assistant Professor	44	25	64%	43	19	69%	39	19	67%	42	23	65%	39	22	64%
Other	34	10	77%	35	11	76%	36	10	78%	31	11	74%	31	11	74%
All Ranks	119	82	59%	120	78	61%	120	84	59%	121	87	58%	124	84	60%

(Term Professor, Term Associate Professor, Term Assistant Professor, and Professor/Associate Professor of Professional Practice appointments are included in Professor, Associate Professor, and Assistant Professor ranks)

Full-Time Faculty Salary Trends



* Term appointments and Professor/Associate Professor of Professional Practice ranks are included in graphs

Full-Time Faculty Salaries by Rank and Gender

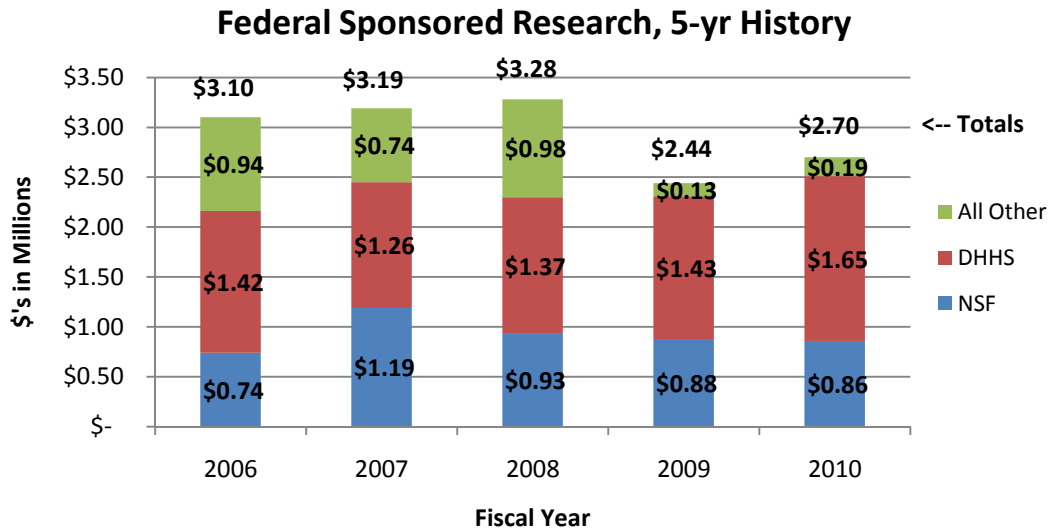
Rank	2005-06				2006-07			
	# of Women	Avg. Salary	# of Men	Avg. Salary	# of Women	Avg. Salary	# of Men	Avg. Salary
Professor	22	\$ 117,661	30	\$ 122,211	25	\$ 125,183	31	\$ 128,266
Associate Prof.	17	78,842	14	83,095	16	84,887	16	86,571
Assistant Prof.	39	65,129	26	63,041	44	65,375	25	65,953
Instructor	-	-	-	-	-	-	-	-
Lecturer	22	59,138	7	57,429	22	62,611	6	55,436
Associates	12	53,479	4	45,304	12	56,044	4	44,101
Total	112	\$ 75,104	81	\$ 87,061	119	\$ 79,111	82	\$ 91,698

Rank	2007-08				2008-09			
	# of Women	Avg. Salary	# of Men	Avg. Salary	# of Women	Avg. Salary	# of Men	Avg. Salary
Professor	27	\$ 129,805	32	\$ 133,904	29	\$ 135,404	39	\$ 136,240
Associate Prof.	15	89,151	16	89,792	16	93,587	16	91,403
Assistant Prof.	43	68,664	19	71,581	39	71,212	19	73,162
Instructor	-	-	-	-	-	-	-	-
Lecturer	22	63,413	8	57,254	24	63,637	6	66,710
Associates	13	55,324	3	47,989	12	62,525	4	49,956
Total	120	\$ 82,574	78	\$ 98,508	120	\$ 87,325	84	\$ 104,357

Rank	2009-10				2010-11			
	# of Women	Avg. Salary	# of Men	Avg. Salary	# of Women	Avg. Salary	# of Men	Avg. Salary
Professor	33	\$ 128,736	38	\$ 138,803	35	\$ 136,283	38	\$ 143,840
Associate Prof.	15	93,590	15	93,613	19	98,907	13	99,131
Assistant Prof.	42	68,766	23	70,892	39	70,614	22	72,206
Instructor	-	-	-	-	-	-	-	-
Lecturer	20	65,151	7	66,036	20	66,103	6	68,712
Associates	11	64,381	4	51,706	11	66,483	5	56,694
Total	121	\$ 87,203	87	\$ 103,199	124	\$ 92,391	84	\$ 107,606

* Term Professor, Term Associate Professor, Term Assistant Professor, and Professor/Associate Professor of Professional Practice appointments are included in Professor, Associate Professor, and Assistant Professor ranks

Federal Sponsored Research and FTE Faculty Leaves



Academic Year	Leave Type							Total Leaves
	Sabbatical (SABB)	Senior Faculty Research (SFRL)	Special Assistant Professor (SAPL)	Professional Development (PDL)	Other Paid Leave	Maternity/Child Care (MAT/RTL-CC)	Leave Without Pay (LWOP)	
2010-11	4.00	4.00	2.00	0.50	1.00	4.00	11.63	27.13
2009-10	7.75	2.75	3.50	0.50	0.13	3.63	12.50	30.76
2008-09	6.00	5.50	2.00	1.50	0.00	2.95	15.93	33.88
2007-08	7.00	3.25	3.50	2.75	1.00	3.15	13.33	33.98
2006-07	5.25	1.50	4.50	3.25	0.00	2.90	11.55	28.95
2005-06	5.25	3.00	3.25	2.25	0.00	4.50	11.88	30.13
2004-05	6.50	3.25	4.25	2.00	0.00	3.50	16.45	35.95
2003-04	4.50	4.50	3.00	0.00	0.00	0.25	16.35	28.60
2002-03	3.00	2.25	2.00	1.00	0.00	0.75	12.00	21.00
2001-02	7.80	4.00	2.50	1.50	0.00	1.25	14.25	31.30

Student Fees and Financial Aid

Barnard Total Cost Compared with 30 Peer Schools

School	Total Costs		Yearly Increases	
	2009-10	2010-11	2010	2011
Columbia	51,544	53,874	4.5%	4.5%
Wesleyan	51,132	53,676	3.8%	5.0%
Barnard	50,970	53,496	3.0%	5.0%
Trinity	51,400	53,380	5.7%	3.9%
Georgetown	51,918	53,340	2.9%	2.7%
Washington	51,193	53,315	4.2%	4.1%
U of Chicago	51,078	53,244	3.5%	4.2%
Johns Hopkins	51,190	53,190	7.0%	3.9%
Oberlin	50,484	52,587	4.8%	4.2%
Northwestern	50,166	52,463	4.0%	4.6%
Williams	49,880	52,340	4.9%	4.9%
Cornell	50,114	52,316	4.0%	4.4%
Dartmouth	49,974	52,275	4.8%	4.6%
Carleton	50,205	52,110	4.5%	3.8%
Mount Holyoke	50,576	52,036	3.9%	2.9%
Wellesley	49,848	51,950	3.9%	4.2%
Penn	49,986	51,944	3.8%	3.9%
Duke	49,856	51,933	5.4%	4.2%
U of Rochester	49,890	51,922	3.8%	4.1%
Smith	50,380	51,898	4.1%	3.0%
Bryn Mawr	50,034	51,780	4.1%	3.5%
Amherst	49,078	51,522	3.5%	5.0%
Swarthmore	49,600	51,500	3.8%	3.8%
Brown	49,128	51,360	2.9%	4.5%
Pomona	49,668	51,330	3.8%	3.3%
Stanford	49,344	51,077	3.5%	3.5%
Harvard	48,868	50,724	-0.1%	3.8%
MIT	49,142	50,446	4.0%	2.7%
Yale	47,500	49,800	3.3%	4.8%
Princeton	47,020	48,580	2.9%	3.3%
Rice	43,287	45,521	5.0%	5.2%
Means	\$49,821	\$51,836	4.0%	4.1%

Historical Tuition and Fee Increases

Academic Year	Tuition		Fees		Room (1)		Board (2)		Total Cost	
	\$	% Inc.	\$	% Inc.	\$	% Inc.	\$	% Inc.	\$	% Inc.
2010-11	38,868	4.9%	1,678	5.0%	7,750	2.3%	5,200	9.7%	53,496	5.0%
2009-10	37,052	3.0%	1,598	2.0%	7,578	3.0%	4,742	3.8%	50,970	3.0%
2008-09	35,972	6.5%	1,566	10.7%	7,356	3.0%	4,570	3.8%	49,464	5.8%
2007-08	33,776	6.5%	1,414	3.7%	7,142	3.5%	4,404	-2.0%	46,736	5.1%
2006-07	31,714	8.0%	1,364	4.0%	6,900	2.0%	4,492	3.0%	44,470	6.4%
2005-06	29,364	8.5%	1,312	2.8%	6,764	3.0%	4,362	3.0%	41,802	6.8%
2004-05	27,064	7.0%	1,276	3.4%	6,566	-2.6%	4,234	10.4%	39,140	5.5%
2003-04	25,294	5.0%	1,234	4.6%	6,740	3.0%	3,835	3.5%	37,103	4.5%
2002-03	24,090	5.0%	1,180	7.9%	6,544	3.0%	3,706	3.0%	35,520	4.5%
2001-02	22,942	4.0%	1,094	9.8%	6,353	3.2%	3,597	3.2%	33,986	3.9%

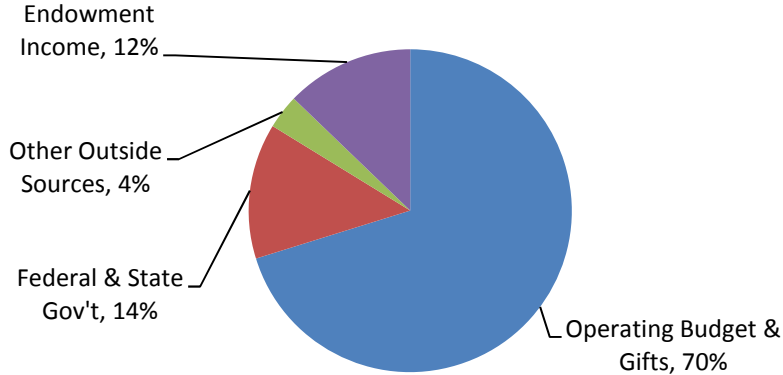
(1) From 2005 forward, Room is the cost of a multiple-student room. Prior years are averages of all room rates

(2) Board is based on an unlimited meal plan

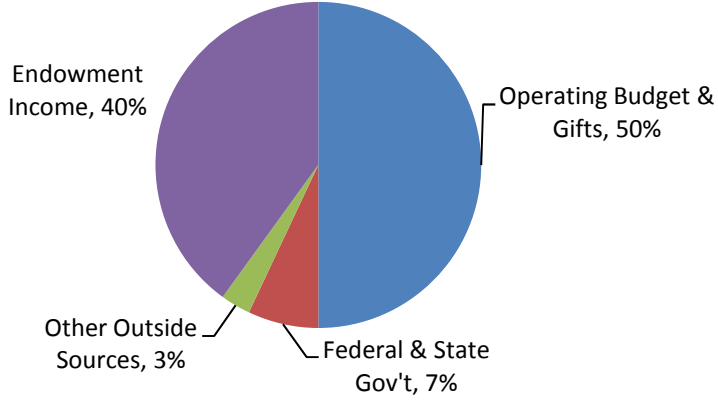
Financial Aid Program Data

FEDERAL PROGRAMS/ TITLE IV	2005-06		2006-07		2007-08		2008-09		2009-10	
	#	\$	#	\$	#	\$	#	\$	#	\$
Campus Based										
SEOG (Federal Share)	206	303,413	155	309,988	201	293,070	214	313,790	194	285,293
Work-Study (Federal Share)	299	274,758	321	275,964	318	284,658	337	290,423	327	340,118
Perkins (Federal Share)	109	-	85	-	85	-	171	-	85	-
Total Campus Based Aid		578,171		585,952		577,728		604,213		625,411
Entitlement Aid										
Pell Grant	393	1,232,912	422	1,277,695	412	1,330,993	428	1,562,474	461	1,964,094
ACG			147	141,675	152	151,900	155	148,560	201	199,025
SMART			30	106,000	34	126,000	37	124,000	41	147,000
Guaranteed Student Loan	711	2,875,893	709	2,849,858	735	2,991,312	580	2,795,685	773	4,327,579
PLUS	315	6,377,860	306	6,447,991	274	5,780,272	224	4,856,606	228	5,096,081
Total Entitlement Aid		10,486,665		10,823,219		10,380,477		9,487,325		11,733,779
TOTAL FEDERAL AID		11,064,836		11,409,171		10,958,205		10,091,538		12,359,190
NEW YORK STATE PROGRAMS										
TAP, Merit, NY Lottery	409	1,293,644	389	1,290,391	394	1,200,772	393	1,221,165	398	1,237,023
HEOP	91	186,000	103	201,000	100	190,000	99	194,000	100	193,000
TOTAL N.Y. STATE AID		1,479,644		1,491,391		1,390,772		1,415,165		1,430,023
BARNARD COLLEGE PROGRAMS										
Barnard College Grant	922	18,850,566	953	21,177,214	965	22,821,802	985	26,004,971	973	24,848,929
Barnard College Loan	84	398,470	79	339,534	87	435,017	24	96,050	14	80,989
TOTAL BARNARD AID		19,249,036		21,516,748		23,256,819		26,101,021		24,929,918
TOTAL AID (FEDERAL, STATE, & BARNARD)		31,793,516		34,417,310		35,605,796		37,607,724		38,719,131

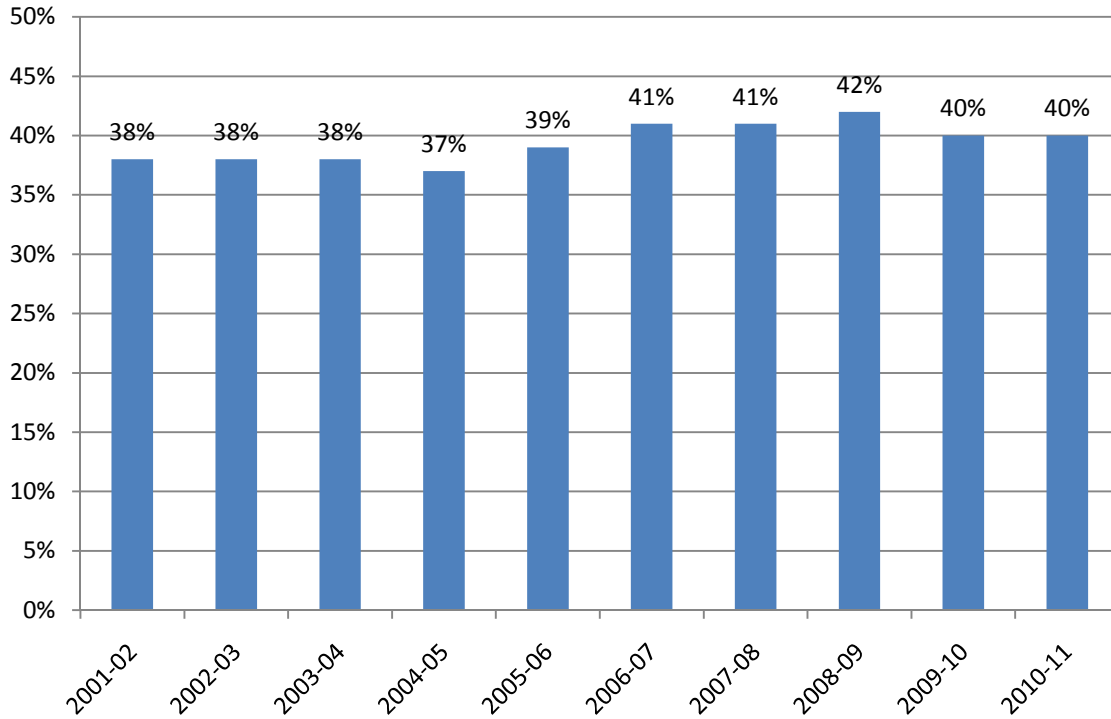
Barnard College - 2010-11 Budgeted Sources of Financial Aid (\$30.29 Million)



30 Peer Institutions - 2008-09 Sources of Financial Aid (Most Recent Data Available)



Full-time Undergraduates Receiving Aid from Barnard

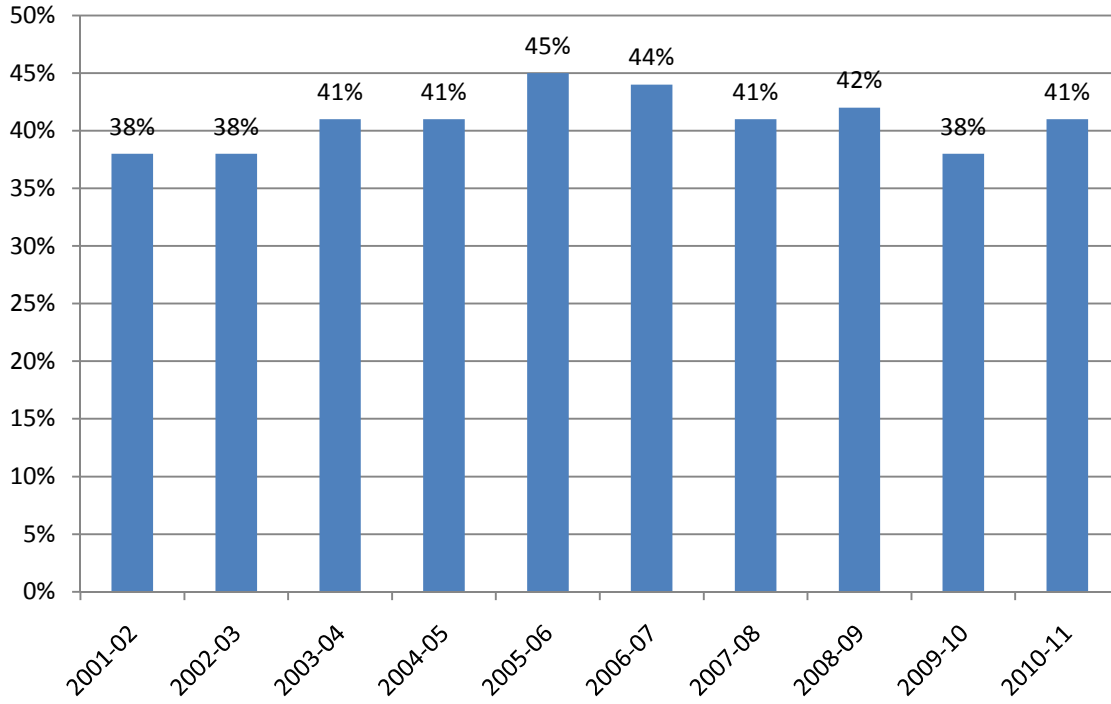


2010-11 All Undergraduates

Ethnicity	Barnard Aid Recipients	All Others	Total
African-American	3.2%	1.1%	4.3%
Latina	5.0%	3.9%	9.0%
Asian	9.4%	6.9%	16.3%
Native American	0.2%	0.0%	0.2%
White	20.8%	44.0%	64.8%
Other	0.4%	5.0%	5.4%
Total	39.0%	61.0%	100.0%

First-Year Student Barnard Aid Recipients

Full-time First-Year Students Receiving Aid from Barnard



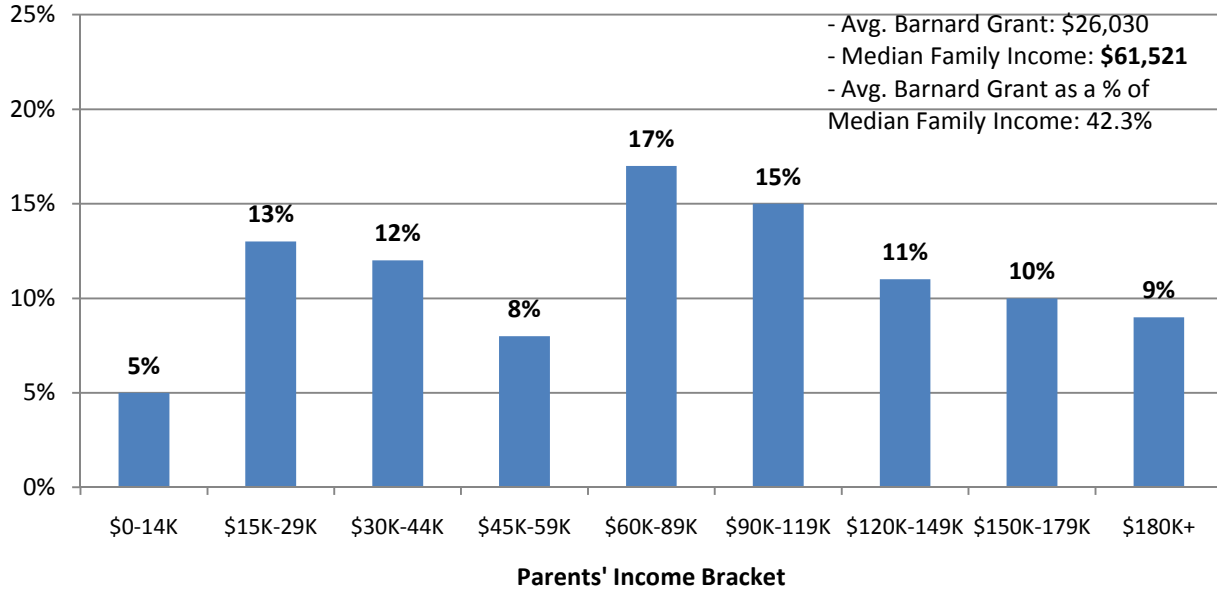
Financial Aid Comparison Data and Average Graduate Indebtedness

	2005-06	2006-07	2007-08	2008-09	2009-10	2010-11 (est.)
Fall Registration	2,344	2,345	2,349	2,367	2,356	2,390
Number Receiving Aid	922	954	965	985	973	965
% of Students Receiving Aid	39%	41%	41%	42%	41%	40%
Tuition and Fees	\$ 30,676	\$ 33,078	\$ 35,190	\$ 37,538	\$ 38,650	\$ 40,546
Total Resident Budget	44,102	46,838	49,174	51,976	53,782	56,358
Average Parents' Income of Dependent Students	63,463	63,826	66,674	73,456	69,626	66,869
Total Resident Budget as a % of Family Income	69.5%	73.4%	73.8%	70.7%	77.2%	84.2%
Average Family Contribution of Dependent Students	\$ 13,334	\$ 14,267	\$ 14,619	\$ 15,300	\$ 15,856	\$ 15,754
Average Self Help	5,298	5,101	5,252	2,866	5,936	5,802
Average Barnard Grant	20,445	22,198	23,650	27,060	25,628	28,004
Average Total Grant	24,243	26,428	27,847	31,425	31,776	33,324
Average Aid Package (Self Help + Total Grant)	\$ 29,541	\$ 31,529	\$ 33,099	\$ 34,291	\$ 37,712	\$ 39,126

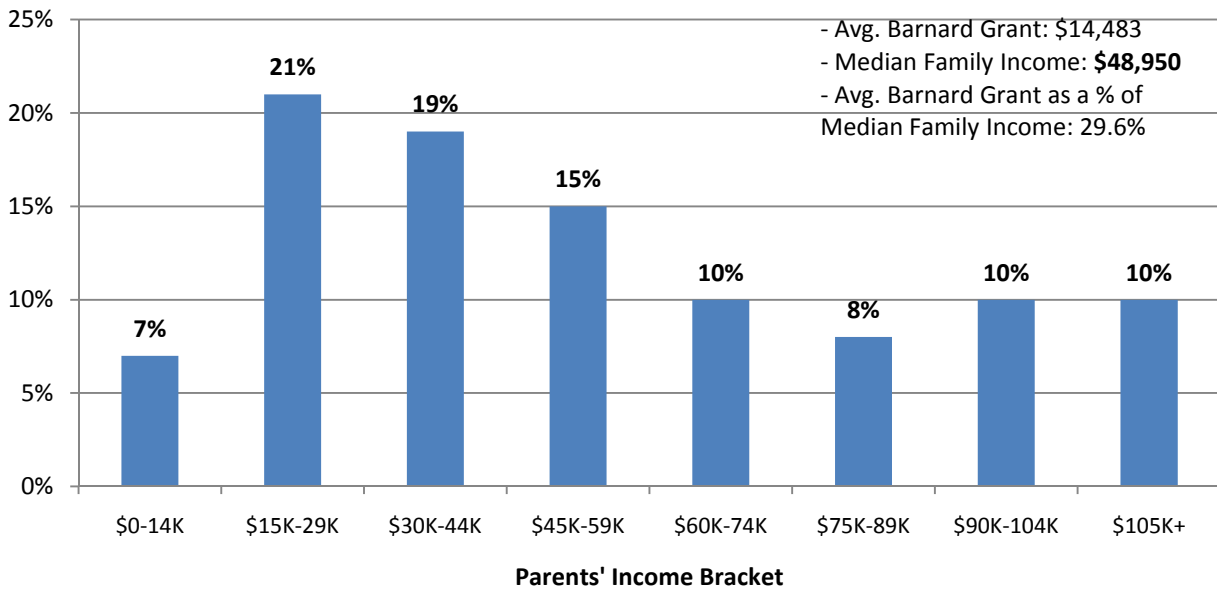
	2005-06	2006-07	2007-08	2008-09	2009-10
Average Graduate Indebtedness	\$ 19,678	\$ 17,149	\$ 16,631	\$ 15,084	\$ 14,142

First-Year Student Financial Aid Recipients by Total Financial Aid Parents' Income

2009-10 First-Year Student Financial Aid Recipients by Total Financial Aid Parents' Income



2000-01 First-Year Student Financial Aid Recipients by Total Financial Aid Parents' Income



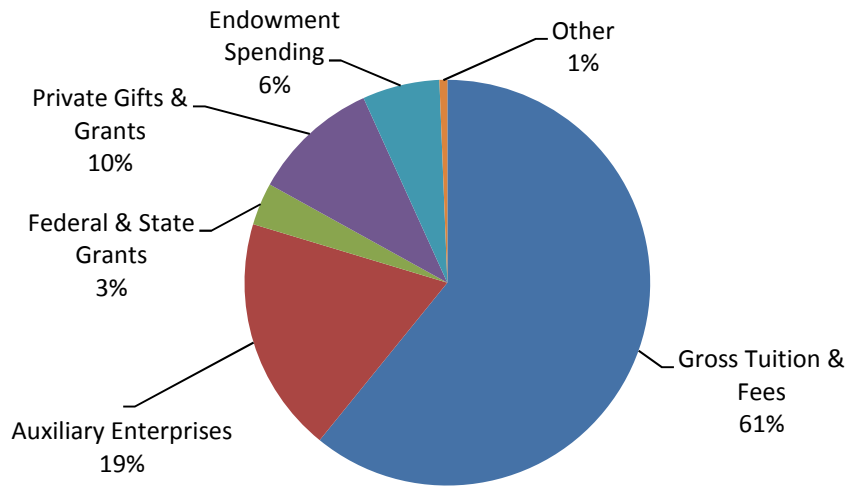
Historical Cost of Attendance as a % of Median Family Income

Academic Year	1980	1985	1990	1995	2000	2005	2010
Median Family Income (Total)	\$ 17,640	\$ 24,580	\$ 32,191	\$ 36,959	\$ 46,737	\$ 52,680	\$ 61,521
Median Family Income (Ages 45-54)	\$ 22,615	\$ 32,592	\$ 42,192	\$ 52,034	\$ 61,833	\$ 70,149	\$ 75,651
COFHE Average Cost of Attendance	\$ 8,129	\$ 14,072	\$ 20,014	\$ 26,707	\$ 32,940	\$ 41,274	\$ 52,359
Barnard Cost of Attendance	\$ 8,580	\$ 15,108	\$ 21,542	\$ 28,220	\$ 33,986	\$ 41,802	\$ 53,496
Barnard Cost of Attendance as a % of Median Family Income (Ages 45-54)	38%	46%	51%	54%	54%	59%	71%

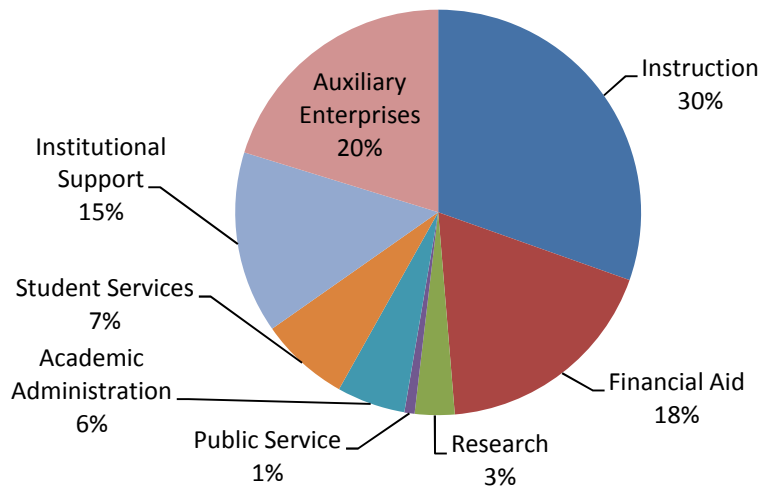
Finance and Endowment

Operating Revenue and Expenses

Gross Operating Revenue, Fiscal Year 2010 \$144.4 Million (Audited Financials)



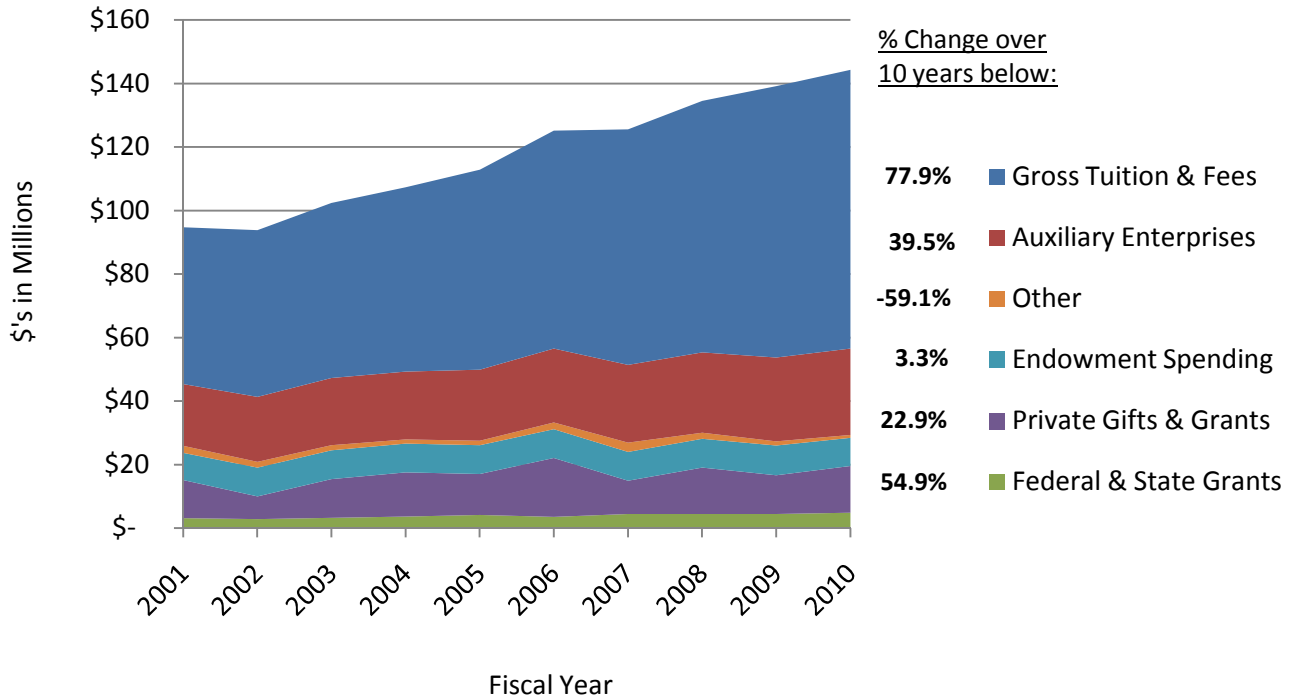
Gross Operating Expenses, Fiscal Year 2010 \$144.0 Million (Audited Financials)



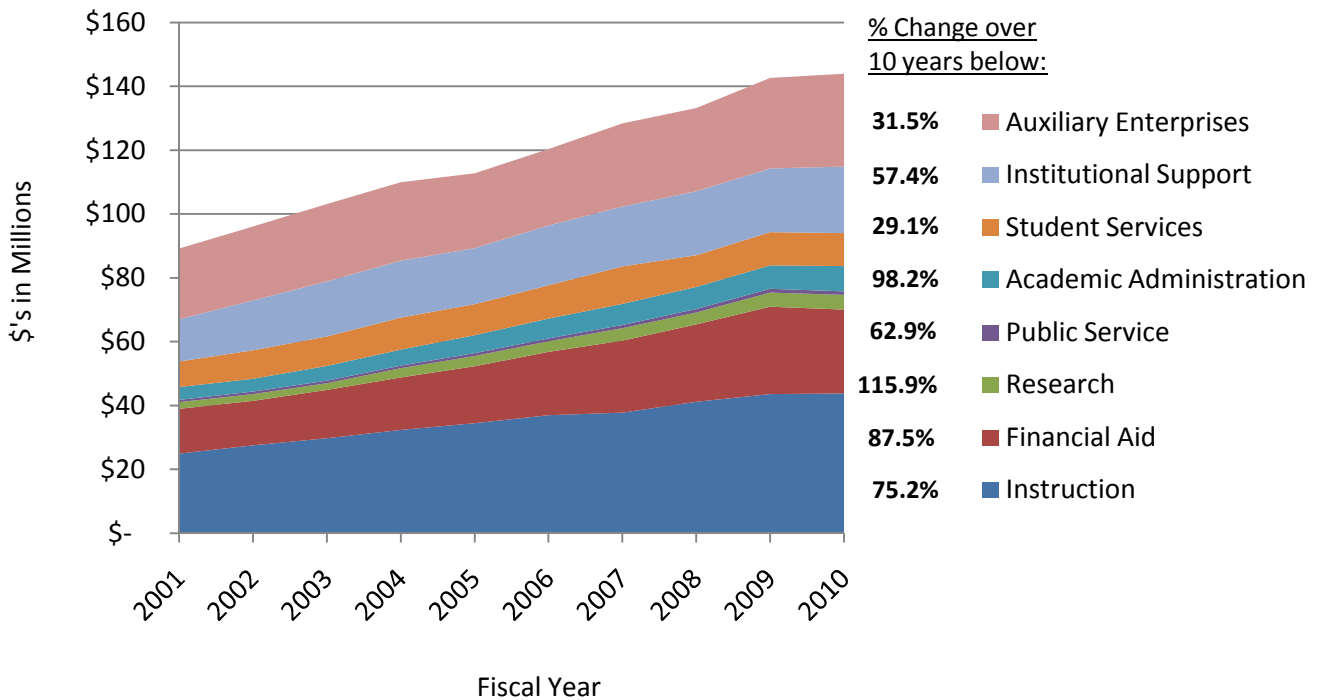
***Auxiliary Enterprises** includes Housing, Dining Services, Health and Counseling Services, and the Summer and Precollege Programs.*

Growth in Revenue and Expenses

Growth in Revenue, Past 10 Years



Growth in Expenses, Past 10 Years



Auxiliary Enterprises includes Housing, Dining Services, Health and Counseling Services, and the Summer and Precollege Programs.

Operating Revenue and Expenses History

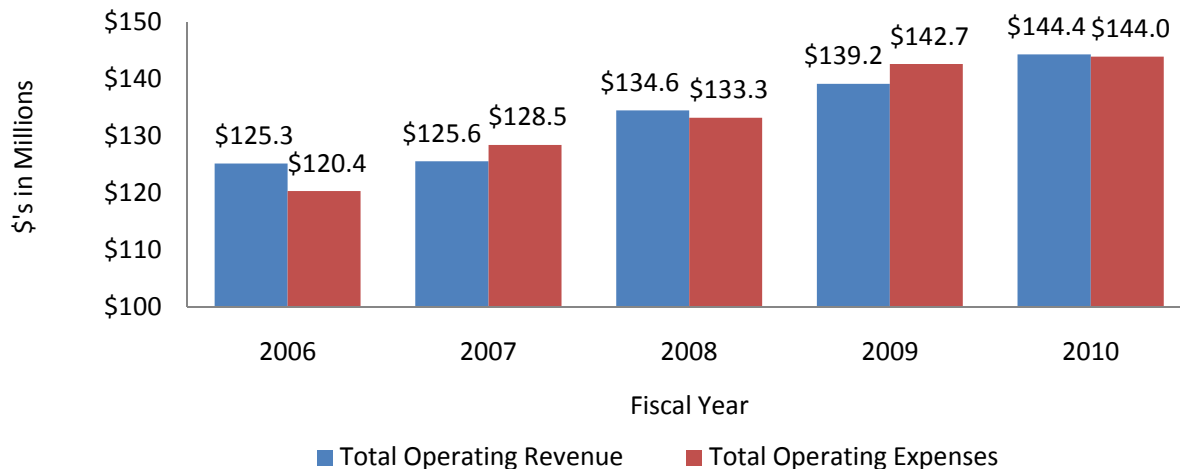
Fiscal Year:	<u>2001</u>	<u>2002</u>	<u>2003</u>	<u>2004</u>	<u>2005</u>
Operating Revenue ('000)					
Gross Tuition & Fees	\$ 49,381	\$ 52,459	\$ 55,174	\$ 58,048	\$ 62,981
Auxiliary Enterprises	19,464	20,438	21,190	21,369	22,413
Federal & State Grants	3,168	2,917	3,276	3,663	4,153
Private Gifts & Grants	11,947	7,110	12,151	13,920	12,904
Endowment Spending	8,600	9,075	9,070	9,070	9,077
Other	<u>2,228</u>	<u>1,853</u>	<u>1,608</u>	<u>1,261</u>	<u>1,377</u>
Total Operating Revenue	<u>\$ 94,788</u>	<u>\$ 93,852</u>	<u>\$ 102,469</u>	<u>\$ 107,331</u>	<u>\$ 112,905</u>
Operating Expenditures ('000)					
Instruction	\$ 24,987	\$ 27,528	\$ 29,780	\$ 32,403	\$ 34,506
Financial Aid	14,032	13,937	15,120	16,400	17,847
Research	2,120	2,118	2,113	2,895	3,192
Public Service	722	838	818	802	951
Academic Administration	3,972	4,000	4,632	5,081	5,525
Student Services	7,968	8,885	9,250	9,978	9,752
Institutional Support	13,248	15,691	17,235	17,872	17,577
Auxiliary Enterprises	<u>22,154</u>	<u>23,115</u>	<u>24,208</u>	<u>24,548</u>	<u>23,450</u>
Total Operating Expenses	<u>\$ 89,203</u>	<u>\$ 96,112</u>	<u>\$ 103,156</u>	<u>\$ 109,979</u>	<u>\$ 112,800</u>
Excess/(Deficit) of Revenues over Expenditures ('000)	<u>\$ 5,585</u>	<u>\$ (2,260)</u>	<u>\$ (687)</u>	<u>\$ (2,648)</u>	<u>\$ 105</u>

Auxiliary Enterprises includes Housing, Dining Services, Health and Counseling Services, and the Summer and Precollege Programs.

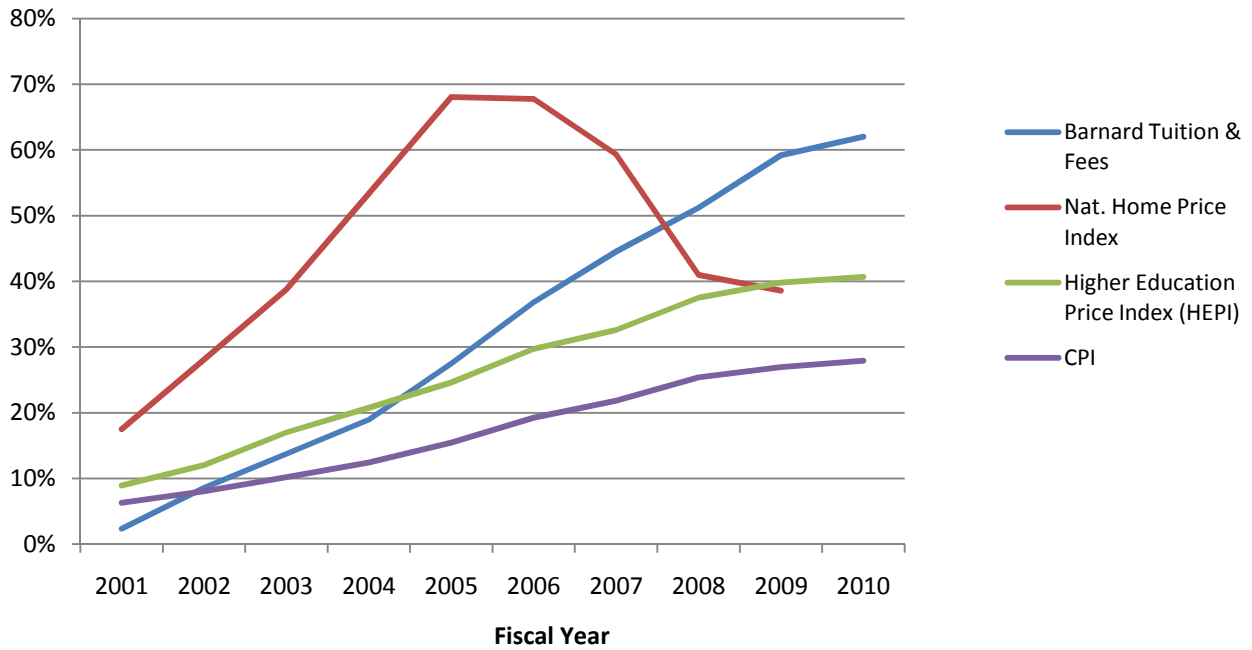
Operating Revenue and Expenses History

Fiscal Year:	<u>2006</u>	<u>2007</u>	<u>2008</u>	<u>2009</u>	<u>2010</u>	<u>Cumulative Change 2006-2010</u>	<u>Cumulative Change 2001-2010</u>
Operating Revenue ('000)							
Gross Tuition & Fees	\$ 68,693	\$ 74,196	\$ 79,142	\$ 85,451	\$ 87,864	27.9%	77.9%
Auxiliary Enterprises	23,265	24,501	25,323	26,482	27,144	16.7%	39.5%
Federal & State Grants	3,607	4,502	4,505	4,476	4,908	36.1%	54.9%
Private Gifts & Grants	18,547	10,435	14,578	12,192	14,688	-20.8%	22.9%
Endowment Spending	9,077	9,077	9,077	9,349	8,882	-2.1%	3.3%
Other	2,066	2,894	1,937	1,292	912	-55.9%	-59.1%
Total Operating Revenue	<u>\$125,255</u>	<u>\$125,605</u>	<u>\$134,562</u>	<u>\$139,242</u>	<u>\$144,398</u>	15.3%	52.3%
Operating Expenditures ('000)							
Instruction	\$ 37,047	\$ 37,799	\$ 41,183	\$ 43,628	\$ 43,782	18.2%	75.2%
Financial Aid	19,836	22,558	24,264	27,411	26,315	32.7%	87.5%
Research	3,277	3,884	3,748	4,345	4,577	39.7%	115.9%
Public Service	910	1,065	1,144	1,174	1,176	29.2%	62.9%
Academic Administration	6,248	6,610	6,842	7,404	7,874	26.0%	98.2%
Student Services	10,388	11,698	9,921	10,392	10,285	-1.0%	29.1%
Institutional Support	18,787	18,788	20,135	19,966	20,849	11.0%	57.4%
Auxiliary Enterprises	23,894	26,078	26,036	28,401	29,134	21.9%	31.5%
Total Operating Expenses	<u>\$120,387</u>	<u>\$128,480</u>	<u>133,273</u>	<u>142,721</u>	<u>143,992</u>	19.6%	61.4%
Excess/(Deficit) of Revenues over Expenditures ('000)	<u>\$ 4,868</u>	<u>\$ (2,875)</u>	<u>\$ 1,289</u>	<u>\$ (3,479)</u>	<u>\$ 406</u>		

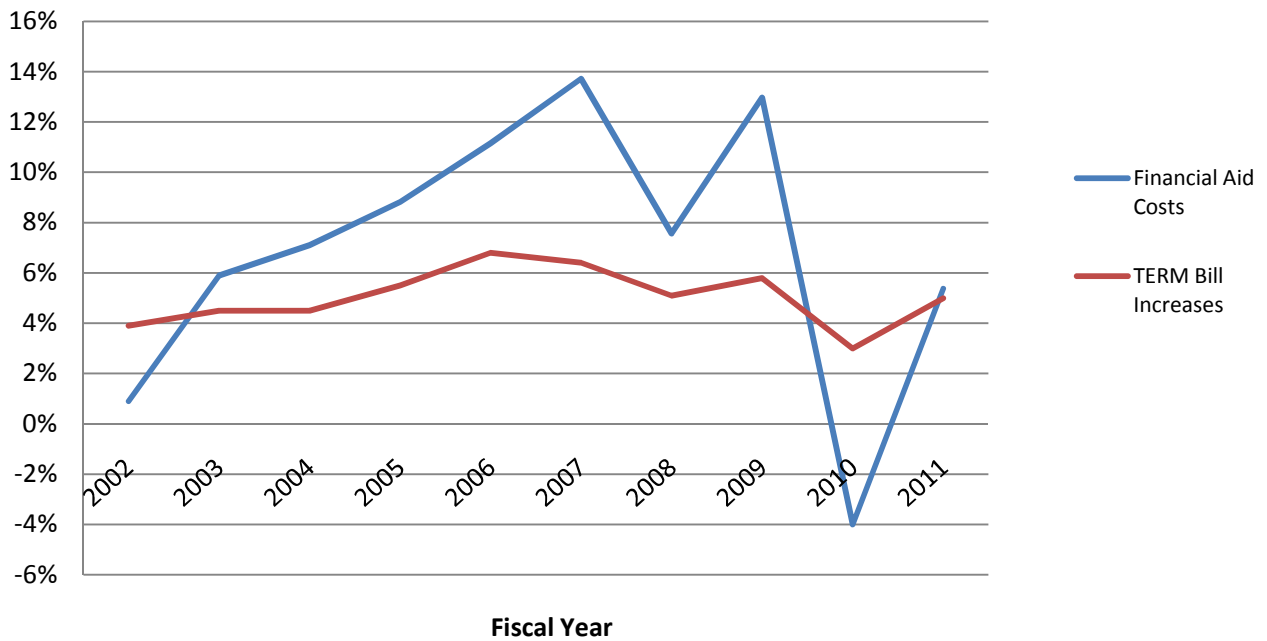
Growth in Operating Revenue and Expenses, Past 5 Years



% Growth in Tuition & Fees and Various Price Indices, Past 10 Years

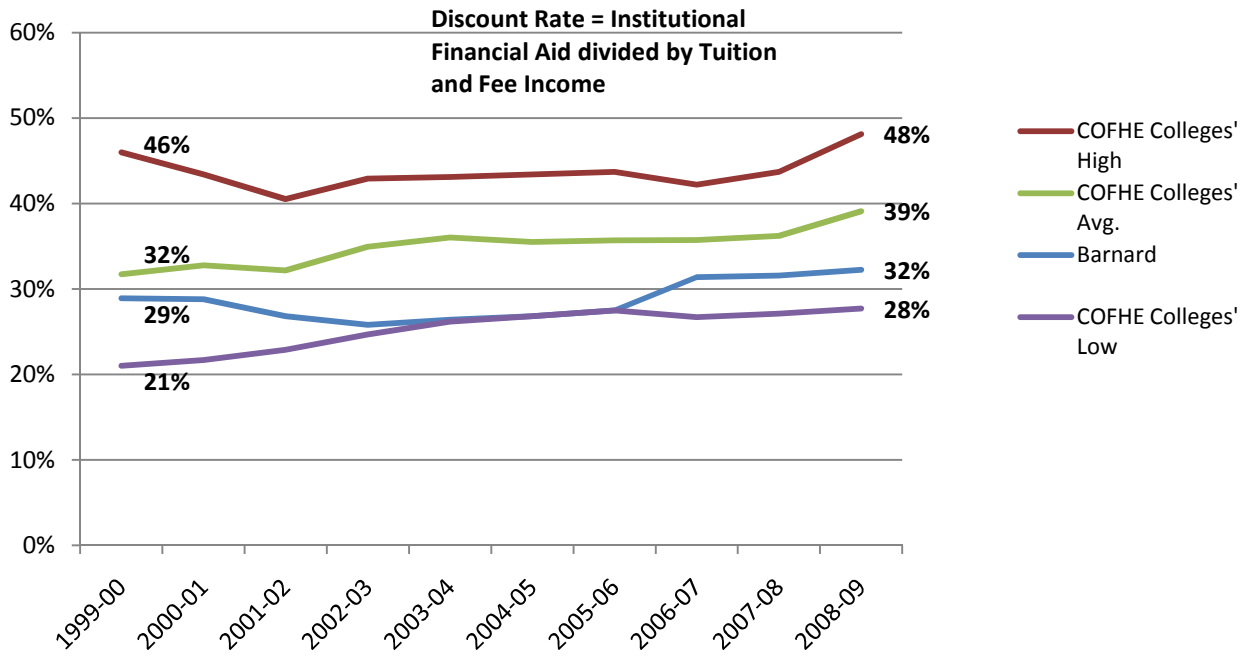


% Changes in Approved TERM Bill and Financial Aid Costs



Historical Discount Rates, Barnard and COFHE Colleges

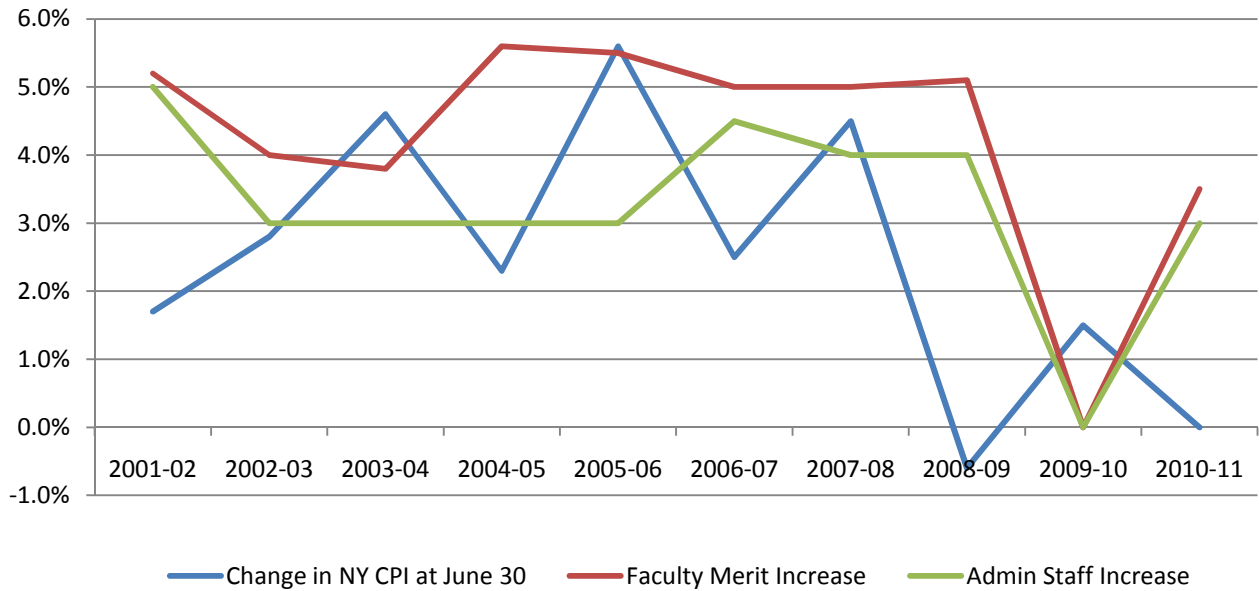
Historical Discount Rates, Barnard and COFHE Colleges



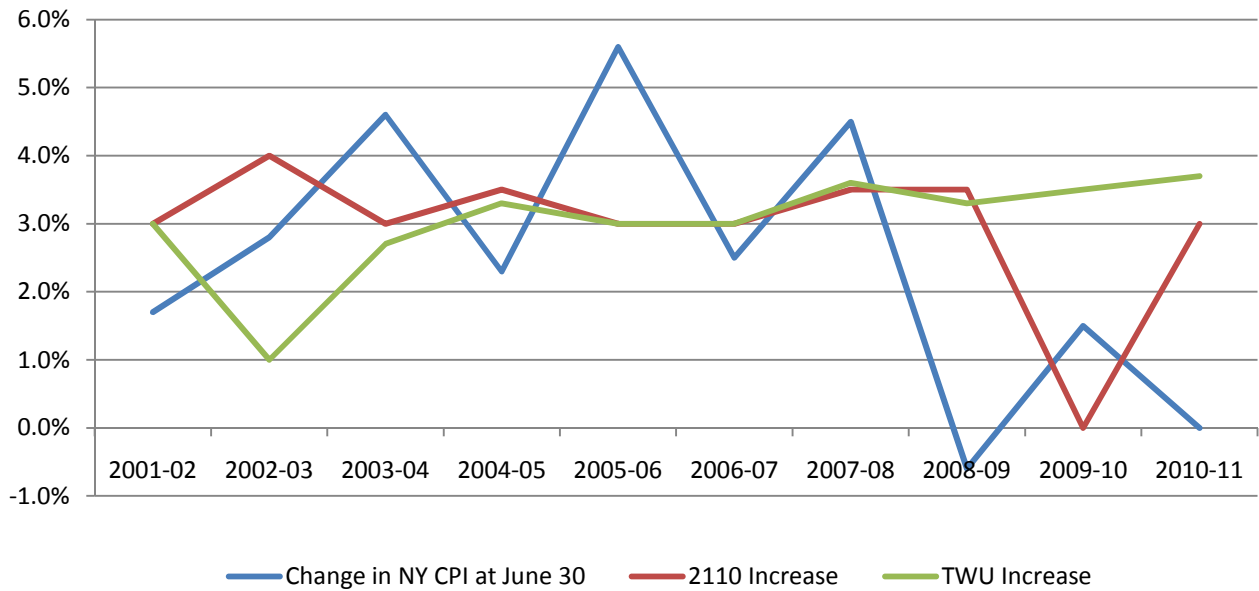
[THIS PAGE INTENTIONALLY LEFT BLANK]

Employee Salary Increases v. New York CPI

New York CPI v. Faculty and Administrative Salary Increases, 2002 - 2011

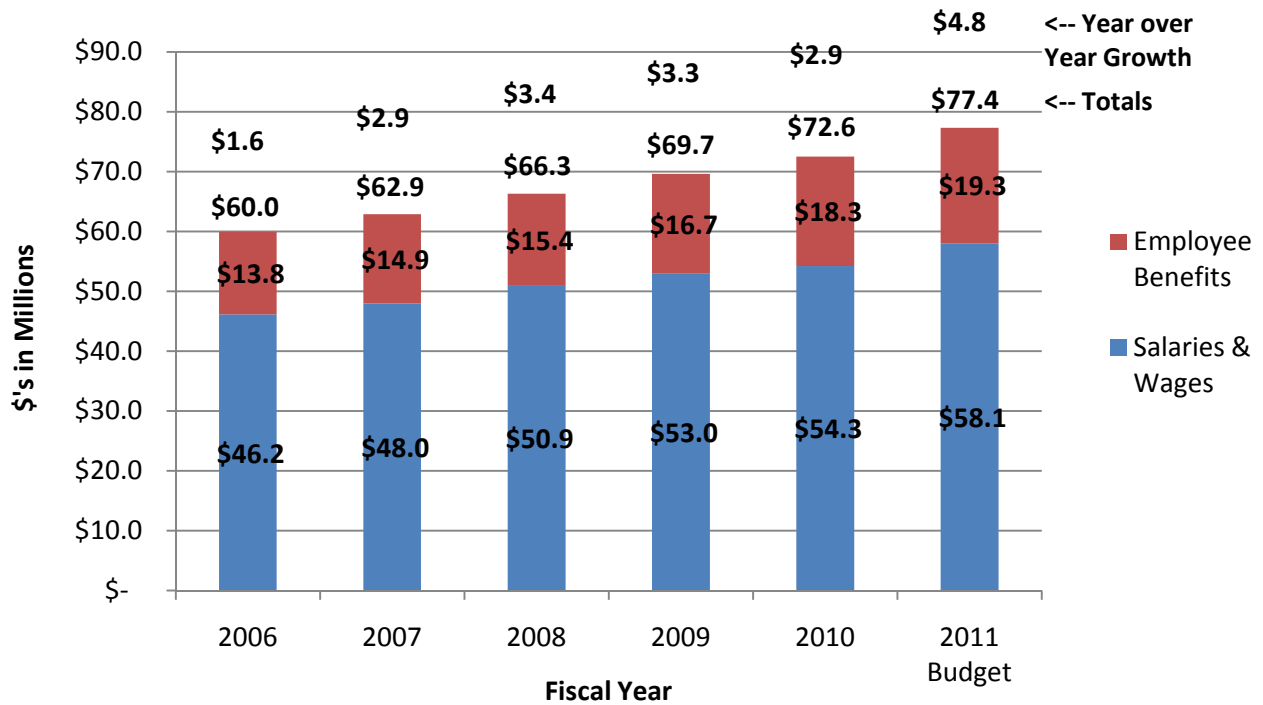


New York CPI v. 2110 and TWU Salary Increases, 2002 - 2011

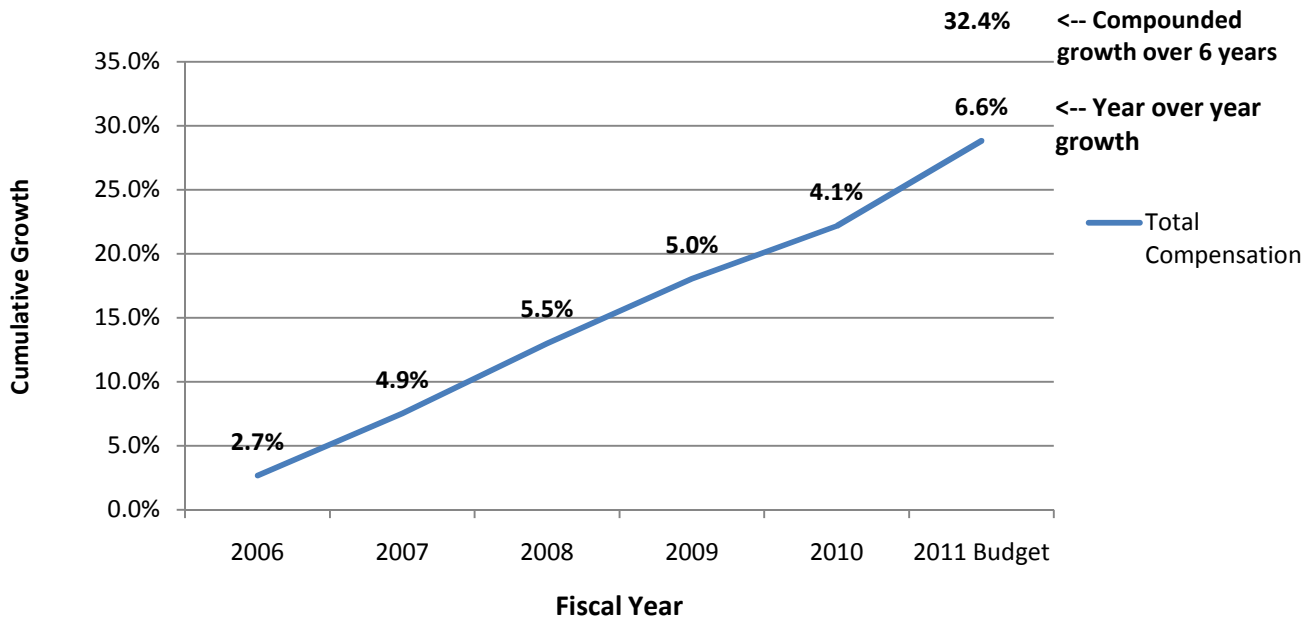


Growth in Total Compensation

\$ Growth in Salaries and Wages and Employee Benefits, Past 6 Years

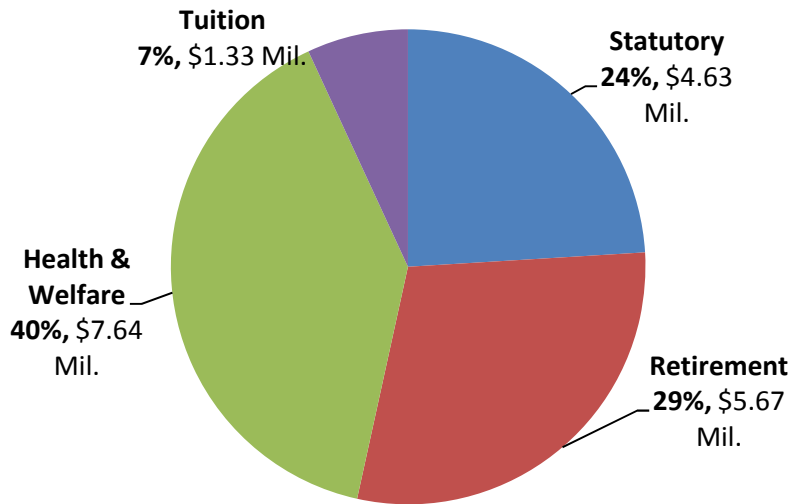


% Growth in Total Compensation, Past 6 Years

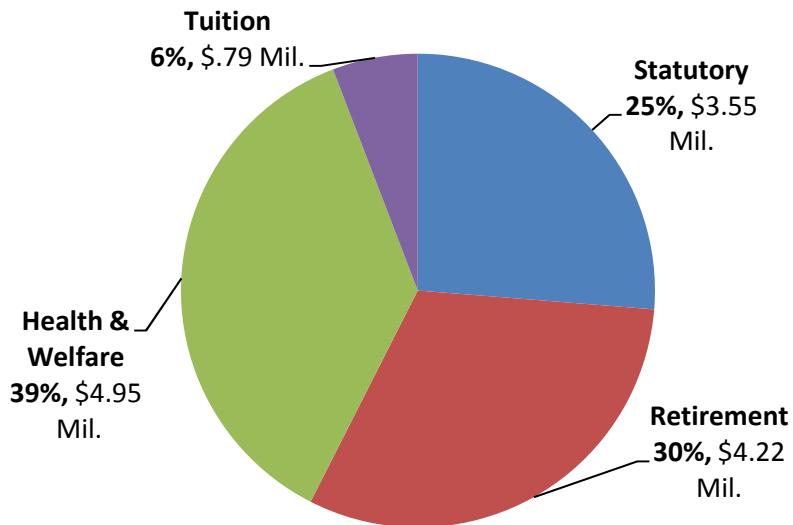


Components of Employee Benefits Cost

Components of Employee Benefits, Fiscal Year 2011 Budget (\$19.27 Million)



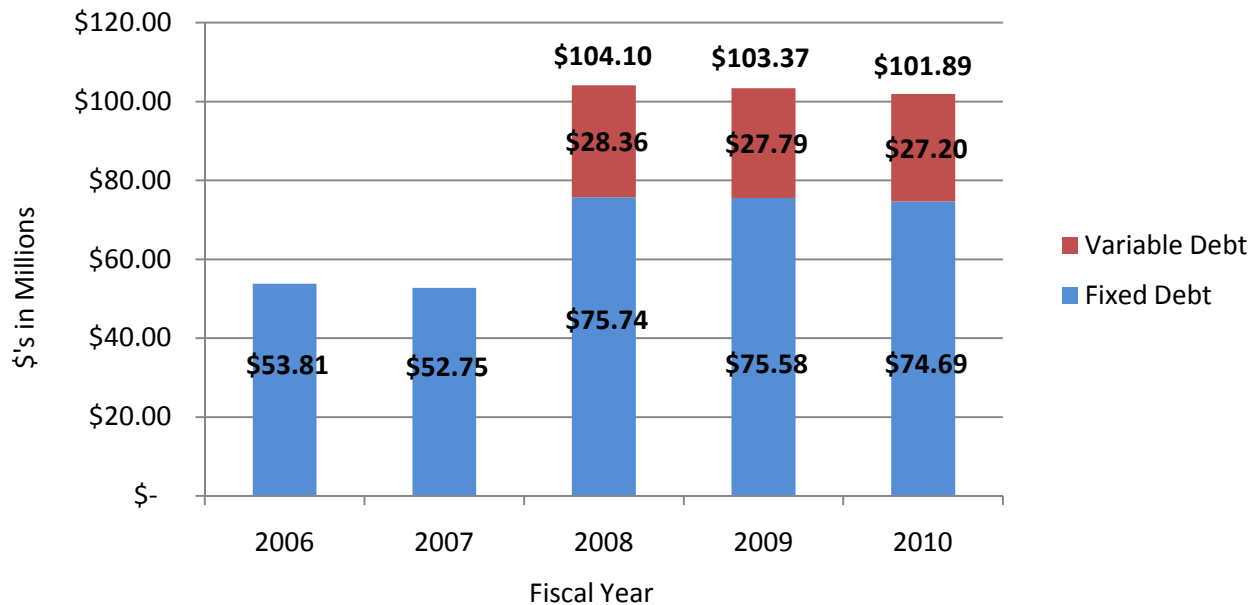
Components of Employee Benefits, Fiscal Year 2005 (\$13.5 Million)



Long-term Debt Obligations

Fiscal Year	2006	2007	2008	2009	2010
Series 2007A and 2007B	-		\$ 76,460,000	\$ 76,045,000	\$ 74,510,000
Series 1996 Bonds	\$ 24,555,000	\$ 23,715,000			
	<hr/>	<hr/>	<hr/>	<hr/>	<hr/>
Series 2004 Bonds	\$ 28,915,000	\$ 28,915,000	\$ 28,355,000	\$ 27,785,000	\$ 27,195,000
Capital Lease Obligation	867,931	715,675	551,902	375,742	186,258
Noninterest-bearing Debt	162,558	40,639	-	-	-
Unamortized Bonds Discount	(692,300)	(636,574)	(1,263,179)	(834,098)	-
Total Notes and Bonds Payable	<hr/> \$ 53,808,189	<hr/> \$ 52,749,740	<hr/> \$ 104,103,723	<hr/> \$ 103,371,644	<hr/> \$ 101,891,258

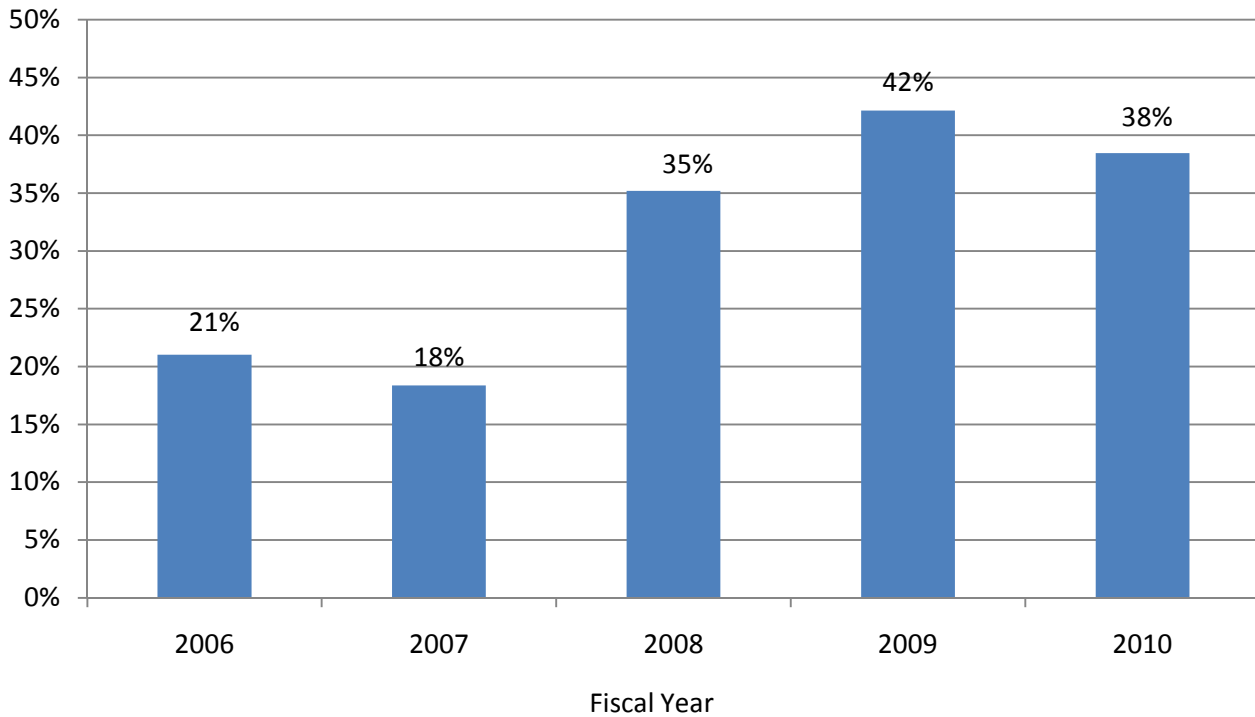
Long-term Debt Obligations, 5-year History



Debt to Net Asset Ratios

Fiscal Year	2006	2007	2008	2009	2010
Long-term Debt Obligations	\$ 53,808,189	\$ 53,249,740	\$ 107,042,436	\$ 106,823,575	\$ 104,451,390
Total Net Assets	\$ 255,806,339	\$ 290,087,381	\$ 304,219,574	\$ 253,507,799	\$ 271,532,040
Debt to Net Assets	21%	18%	35%	42%	38%

Debt to Net Assets Ratio, 5-year History

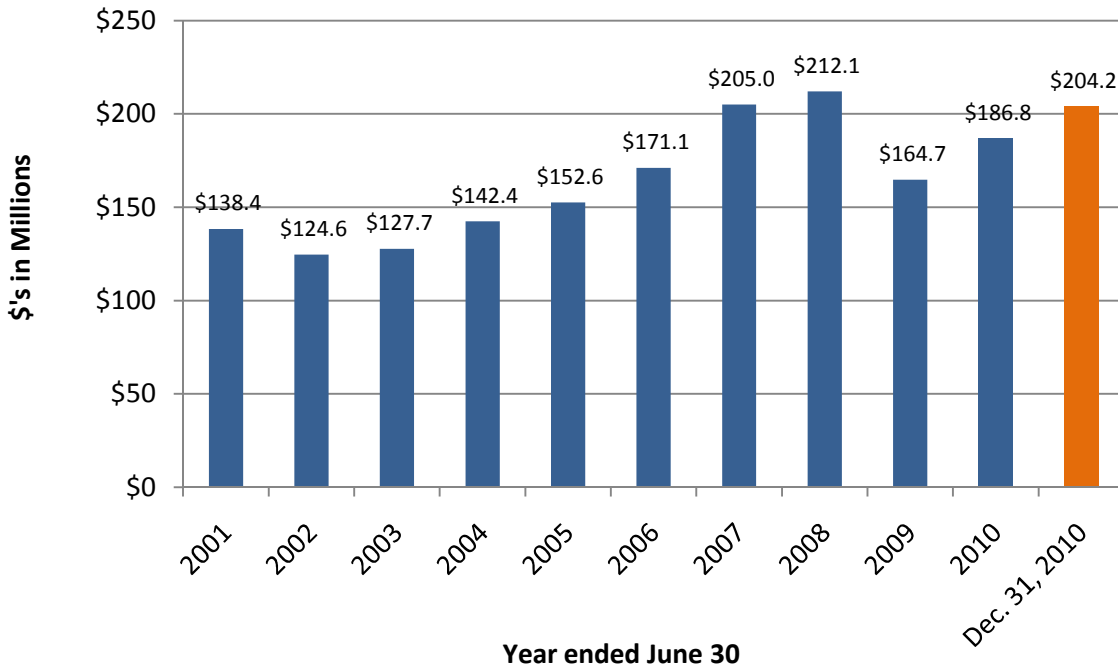


Endowment per Student Comparative Data

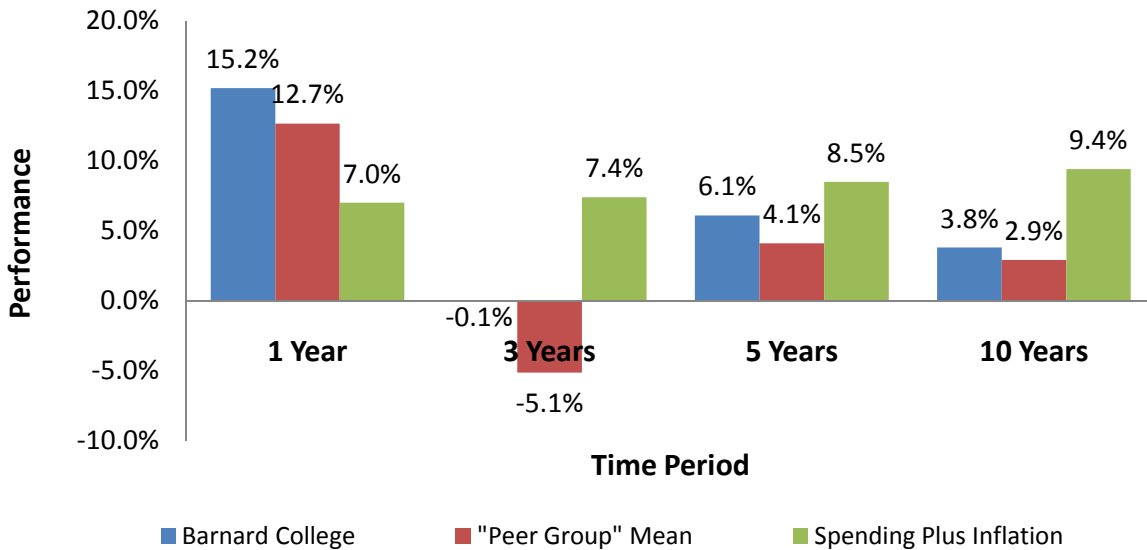
Institution	2010-11 Tuition, Fees, Rm. & Bd.	FY10 Endowment Funds ('000)	2009-10 Number of FTE Students	FY10 Endowment Assets Per FTE Student
Columbia U	\$ 53,874	\$ 6,516,512	21,817	\$ 298,690
Wesleyan	53,676	504,406	3,028	166,581
NYU	53,589	2,370,000	38,391	61,733
Barnard	53,496	186,810	2,376	78,624
Trinity	53,380	356,756	2,284	156,198
Georgetown	53,340	1,009,736	14,603	69,146
Washington U	53,315	4,473,180	11,805	378,922
U of Chicago	53,244	4,904,717	12,499	392,409
Johns Hopkins	53,190	2,219,925	15,231	145,750
Oberlin	52,587	618,104	2,891	213,803
Northwestern	52,463	5,945,277	17,065	348,390
Williams	52,340	1,526,571	2,114	722,124
Cornell	52,316	4,378,587	20,564	212,925
Dartmouth	52,275	2,998,302	5,871	510,697
Carleton	52,110	563,439	1,986	283,705
Mt. Holyoke	52,036	519,891	2,259	230,142
Wellesley	51,950	1,306,796	2,182	598,898
Penn	51,944	5,668,939	18,187	311,703
Duke	51,933	4,823,572	13,542	356,193
U of Rochester	51,922	1,367,878	8,664	157,881
Smith	51,898	1,243,561	3,054	407,191
Bryn Mawr	51,780	573,674	1,647	348,315
Amherst	51,522	1,385,745	1,734	799,161
Swarthmore	51,500	1,249,254	1,515	824,590
Brown	51,360	2,155,330	8,191	263,134
Pomona	51,330	1,458,974	1,531	952,955
Stanford	51,077	13,851,115	14,997	923,592
Harvard	50,724	27,223,221	19,842	1,372,000
MIT	50,446	8,317,321	10,277	809,314
Yale	49,800	16,652,000	11,424	1,457,633
Princeton	48,580	14,391,450	7,523	1,912,993
Rice	45,521	3,786,548	5,475	691,607
Means	\$ 51,891	\$ 4,517,112	9,518	\$ 514,281

Endowment Performance

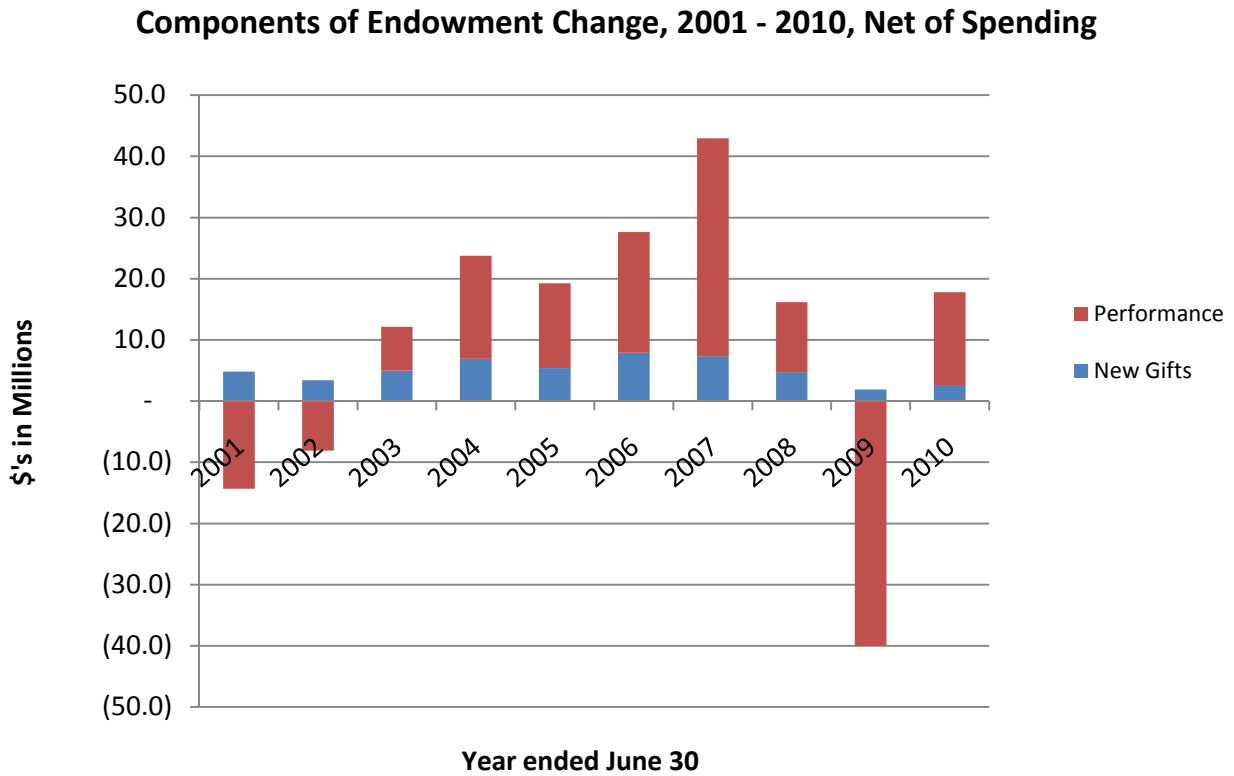
Endowment Market Value, 6/30/01 - 6/30/10, & 12/31/10



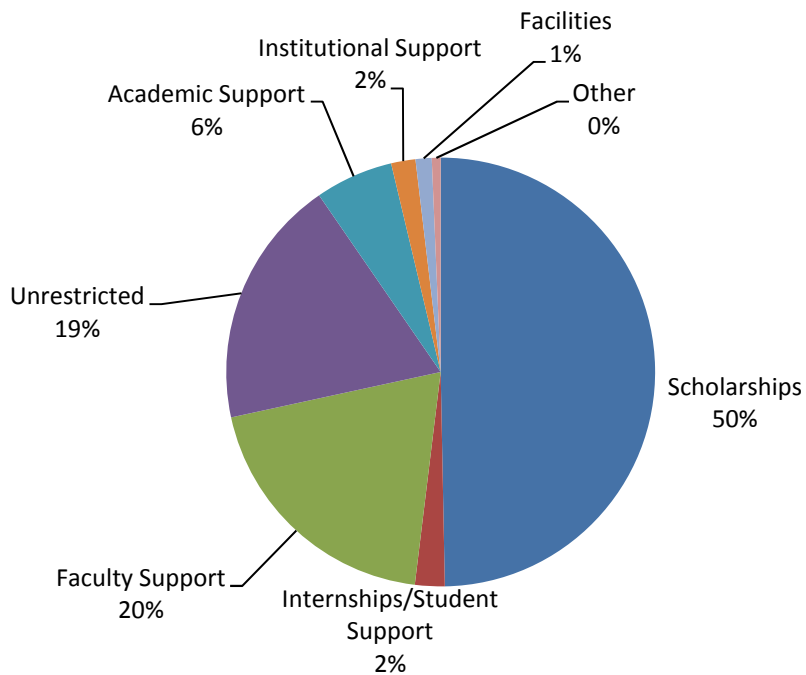
Comparative Endowment Returns as of June 30, 2010



Components of Endowment Change and Endowment Spending Restrictions



Endowment Spending Restrictions, Fiscal Year 2011



Alumnae and Development

Alumnae Geographic Distribution, February 2010

State (w/International)	#	%
New York	11,364	39%
New Jersey	2,760	10%
California	2,624	9%
Massachusetts	1,613	6%
International *	1,428	5%
Connecticut	1,001	3%
Pennsylvania	904	3%
Maryland	865	3%
Florida	868	3%
Virginia	496	2%
Illinois	423	1%
District of Columbia	428	1%
Texas	394	1%
Washington	349	1%
North Carolina	261	1%
Ohio	247	1%
All Other	2,799	10%

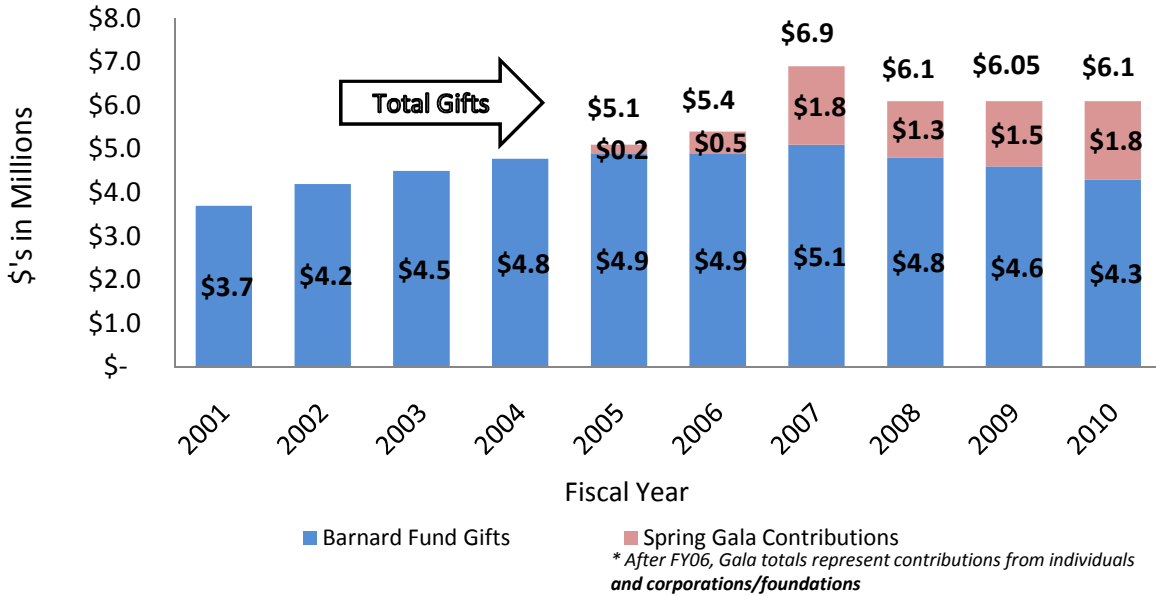
Represents 28,824 Alumnae

** International breakout below*

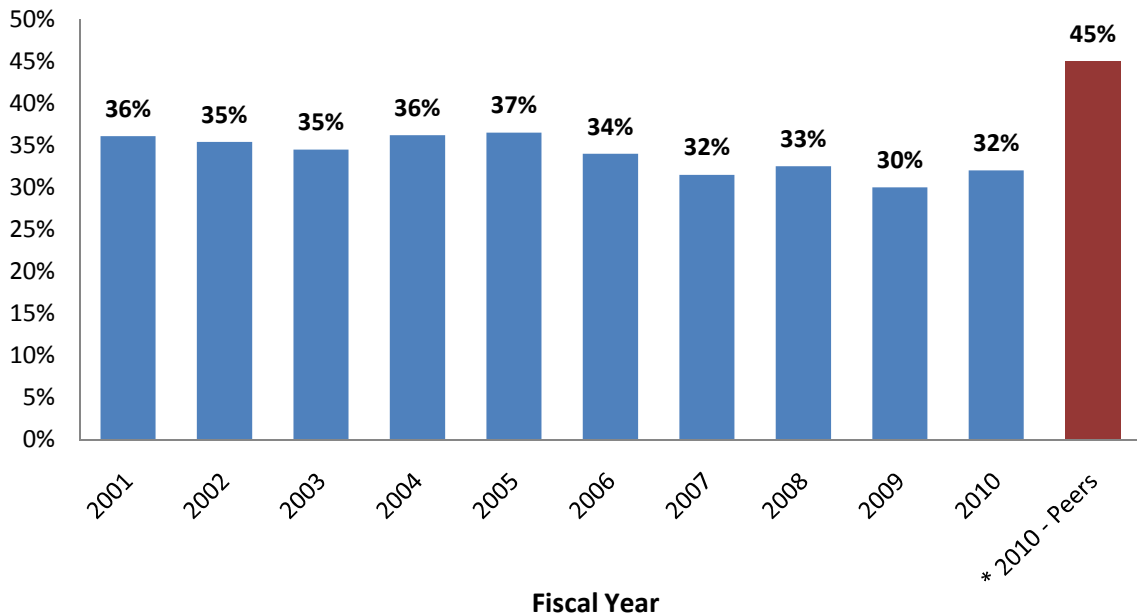
Country	#	%
Israel	327	23%
United Kingdom	241	17%
Canada	146	10%
France	118	8%
Hong Kong	56	4%
Japan	50	4%
Italy	44	3%
Germany	41	3%
Switzerland	30	2%
Korea, Rep. Of	29	2%
Australia	29	2%
Greece	25	2%
Netherlands	19	1%
Taiwan	18	1%
Spain	12	1%
All Other	243	17%

Represents 1,428 Alumnae

Barnard Fund Gifts and Spring Gala Contributions, 10-yr History

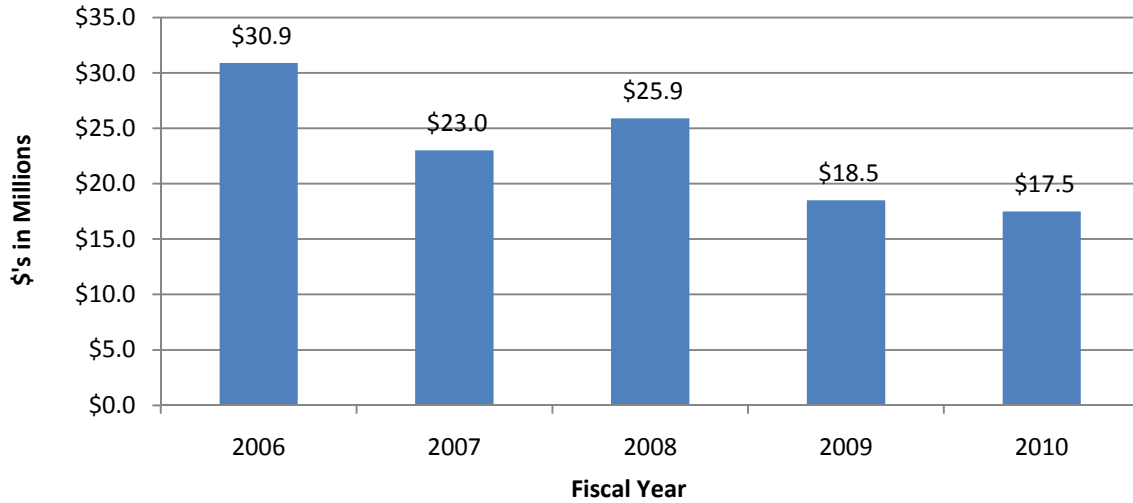


Alumnae Giving Participation Rates, 10-yr History

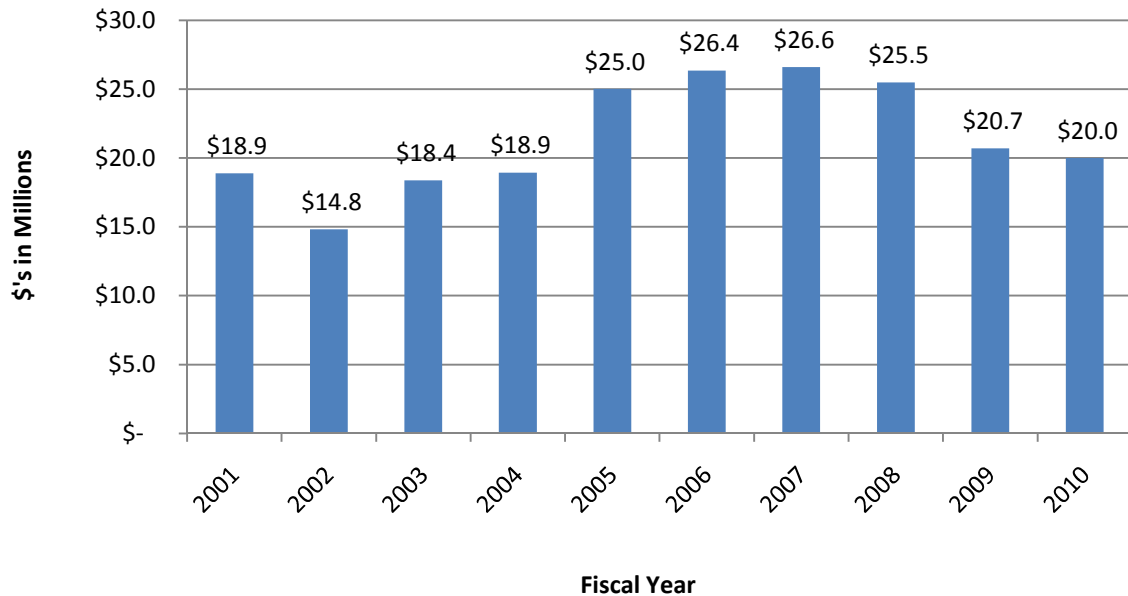


New Gifts and Pledges and Total Cash Receipts

New Gifts and Pledges, 5-yr History

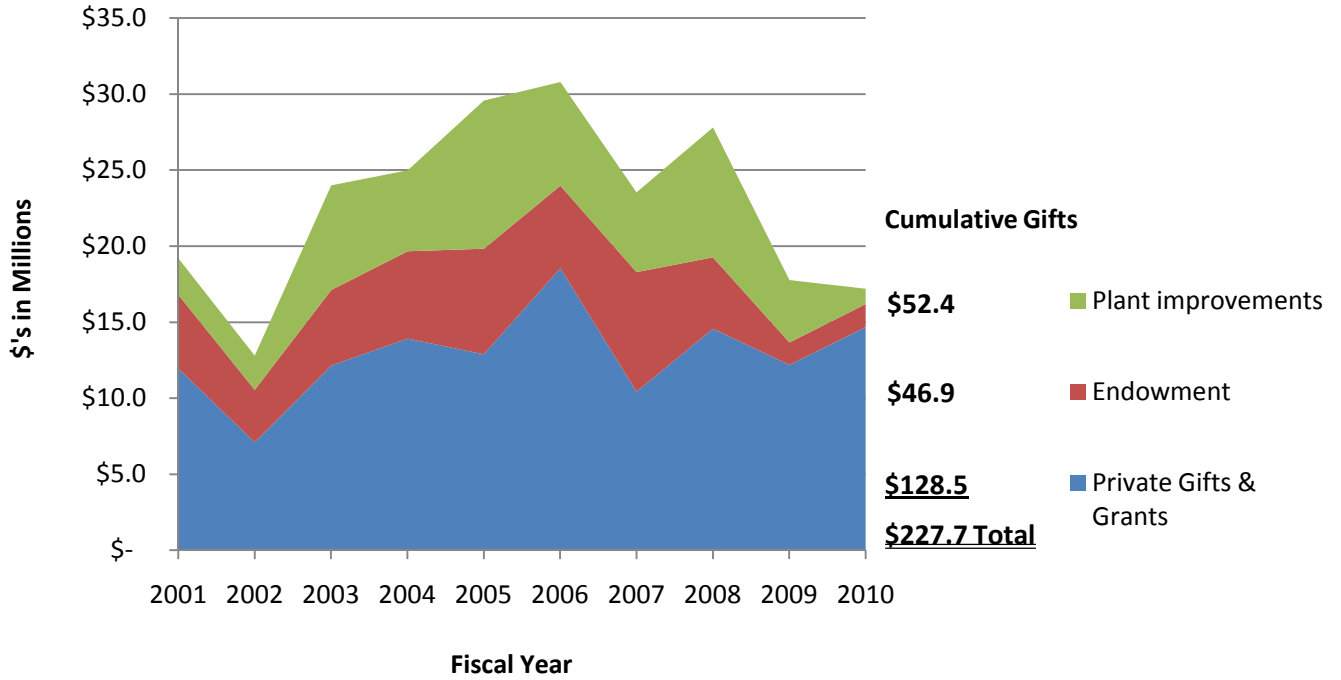


Total Cash Receipts, 10-yr History



Giving by Purpose History

Giving by Purpose, Past 10 Years



[THIS PAGE INTENTIONALLY LEFT BLANK]

College Staff

Staff Demographics

FULL-TIME

class	Female				Female Total	Male				Male Total	FT Total
	White & Other	Black	Hisp.	Asian		White & Other	Black	Hisp.	Asian		
32BJ	-	2	-	-	2	2	4	-	-	6	8
Administrative	124	25	13	15	177	34	11	8	8	61	238
Confidential	1	1	-	-	2	1	-	-	-	1	3
Local 2110	32	36	13	4	85	12	18	8	2	40	125
TWU	5	17	14	1	37	14	26	27	2	69	106
Miscellaneous	5	-	1	2	8	-	-	-	-	-	8
Grand Total	167	81	41	22	311	63	59	43	12	177	488

PART-TIME

class	Female				Female Total	Male				Male Total	PT Total
	White & Other	Black	Hisp.	Asian		White & Other	Black	Hisp.	Asian		
32BJ	-	-	-	-	-	-	-	-	-	-	-
Administrative	16	1	1	1	19	1	-	1	1	3	22
Confidential	-	-	-	-	-	1	-	-	-	1	1
Local 2110	3	12	7	1	23	4	7	5	-	16	39
TWU	-	1	-	-	1	-	1	1	-	2	3
Miscellaneous	16	-	-	3	19	11	4	1	3	19	38
Grand Total	35	14	8	5	62	17	12	8	4	41	103

ALL EMPLOYEES

class	Female				Female Total	Male				Male Total	Grand Total
	White & Other	Black	Hisp.	Asian		White & Other	Black	Hisp.	Asian		
32BJ	-	2	-	-	2	2	4	-	-	6	8
Administrative	140	26	14	16	196	35	11	9	9	64	260
Confidential	1	1	-	-	2	2	-	-	-	2	4
Local 2110	35	48	20	5	108	16	25	13	2	56	164
TWU	5	18	14	1	38	14	27	28	2	71	109
Miscellaneous	21	-	1	5	27	11	4	1	3	19	46
Grand Total	202	95	49	27	373	80	71	51	16	218	591

* MISC, RAST, & SUMR Job Classes are counted as Miscellaneous

Staffing Trends

Class	Full Time				
	2006-07	2007-08	2008-09	2009-10	2010-11
32BJ	8	8	6	8	8
Administrative	216	224	228	234	238
Confidential	5	5	3	3	3
Local 2110	124	122	122	130	125
TWU	91	93	93	95	106
Miscellaneous	12	6	8	5	8
Grand Total	456	458	460	475	488

Class	Part Time				
	2006-07	2007-08	2008-09	2009-10	2010-11
32BJ	0	0	0	0	0
Administrative	34	36	27	24	22
Confidential	1	1	1	1	1
Local 2110	42	42	41	31	39
TWU	3	2	2	4	3
Miscellaneous	28	23	19	15	38
Grand Total	108	104	90	75	103

Class	All Staff				
	2006-07	2007-08	2008-09	2009-10	2010-11
32BJ	8	8	6	8	8
Administrative	250	260	255	258	260
Confidential	6	6	4	4	4
Local 2110	166	164	163	161	164
TWU	94	95	95	99	109
Miscellaneous	40	29	27	20	46
Grand Total	564	562	550	550	591

	Employee Profile				
	2006-07	2007-08	2008-09	2009-10	2010-11
Full-Time	456	458	460	475	488
Part-Time	108	104	90	75	103
All Employees	564	562	550	550	591

** Changes in 09-10 reflect changes to the contract and scheduling for Access Attendants*

[THIS PAGE INTENTIONALLY LEFT BLANK]

Facilities and Public Safety

Facilities Summary

<u>Building</u>	<u>Construction Date</u>	<u>Gross Square Feet</u>
<u>Main Campus Buildings:</u>		<u>869,612</u>
Altschul	1967	182,614
Sulzberger	1988	151,860
Milbank	1890	121,068
Diana Center	2010	100,000
Hewitt	1920	81,135
Barnard	1916	76,411
Lehman	1959	68,513
Brooks	1897	47,543
Reid	1961	35,974
Barnard Annex	1940	4,494
<u>Off -Campus Buildings:</u>		<u>384,767</u>
600 West 116th Street	1905	95,953
Plimpton	1967	79,346
616 West 116th Street	1905	59,180
620 West 116th Street	1905	59,180
Cathedral Gardens	2006	55,705
Elliott	1905	35,403
Total Gross Square Feet		1,254,379

Crime Statistics

Offense	Year	On Campus Property ¹	Residential Facilities	Noncampus Property	Contiguous Public Property ²
Murder/Non-Negligent Manslaughter	2007	0	0	0	0
	2008	0	0	0	0
	2009	0	0	0	0
Negligent Manslaughter	2007	0	0	0	0
	2008	0	0	0	0
	2009	0	0	0	0
Sex Offenses, Forcible	2007	0	0	0	0
	2008*	2	1	0	0
	2009**	4	4	0	0
Sex Offenses, Non-Forcible	2007	0	0	0	0
	2008	0	0	0	0
	2009	0	0	0	0
Robbery	2007	0	0	0	5
	2008	0	0	0	0
	2009	0	0	0	3
Aggravated Assault	2007	0	0	0	0
	2008	0	0	0	0
	2009***	0	0	2	0
Burglary	2007	4	3	0	0
	2008	4	0	0	0
	2009	11	3	0	0
Motor Vehicle Theft	2007	0	0	0	1
	2008	0	0	0	0
	2009	0	0	0	0
Arson	2007	0	0	0	0
	2008	0	0	0	0
	2009	0	0	0	0
Liquor Law Arrests	2007	0	0	0	0
	2008	0	0	0	0
	2009	0	0	0	0
Liquor Law Violations Referred for Disciplinary Action	2007	28	28	3	2
	2008	35	32	3	0
	2009	63	63	7	0
Drug Law Arrests	2007	0	0	0	0
	2008	0	0	0	0
	2009	0	0	0	0
Drug Law Violations Referred for Disciplinary Action	2007	17	17	0	0
	2008	10	10	0	0
	2009	13	13	0	0
Illegal Weapons Possession Arrests	2007	0	0	0	0
	2008	0	0	0	0
	2009	0	0	0	0
Illegal Weapons Violations Referred for Disciplinary Action	2007	0	0	0	0
	2008	0	0	0	0
	2009	0	0	0	0
Hate Crimes³	None of the crimes listed above were bias motivated.				

(1) Crimes reported in this Residential Facilities column are included in the On-Campus Category

(2) Includes 116th Street from Broadway to Claremont Avenue, Claremont from 116th Street to 120th Street, 120th Street from Broadway to Claremont, sidewalks on 121st Street on Amsterdam near Plimpton Hall, and sidewalks on Manhattan Avenue between 110th Street and 109th Street near Cathedral Garden. Statistics do not include crimes reported on the Columbia University Campus.

(3) The Higher Education Opportunity Act of 2008 requires universities to report incidents of larceny, intimidation, simple assault, and vandalism, if those crimes were determined to be bias motivated. No incidents determined to be bias motivated were reported in 2009 and 2008.

The definitions of murder, robbery, aggravated assault, burglary, and motor vehicle theft are as those offenses are commonly understood. A forcible sexual offense includes such acts as forcible rape, forcible sodomy, sexual assault with an object, and forcible fondling. Non-forcible sexual offenses include incest and statutory rape. Similar statistics for the Columbia University campus are printed in FACETS.

2008 *One sexual assault report was received anonymously through the Columbia University website. Both reports allege unwanted fondling

2009** All reported sex offenses involved an acquaintance; ***Reported assaults involved non-affiliate tenants known to each other

