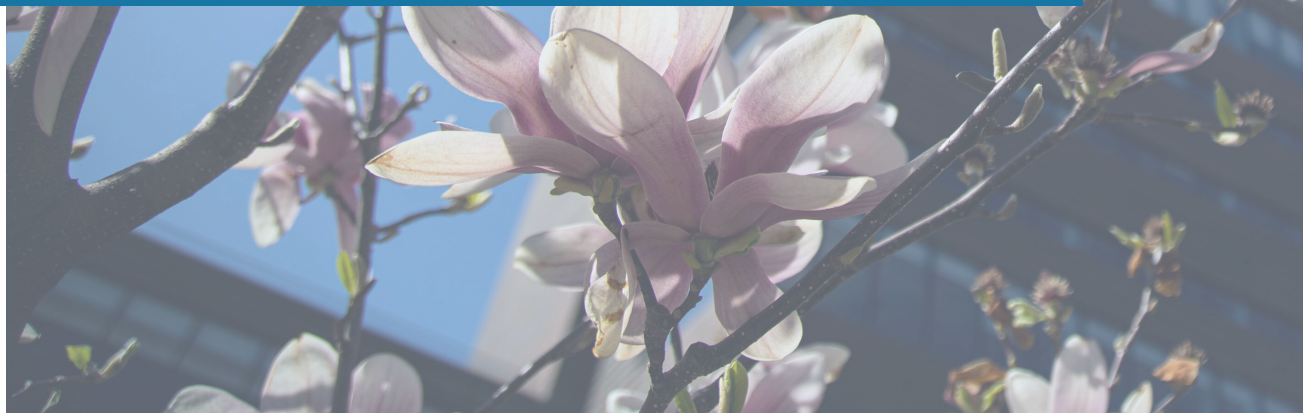




# 2020-2021

## Sustainability and Climate Action



# BARNARD

[www.barnard.edu/sustainability-climate-action](http://www.barnard.edu/sustainability-climate-action)

## 360 DEGREES

---

As we emerge from the pandemic, the need for climate action at all levels – individual, community, national, and global – has never been more clear. The disproportionate impacts of COVID-19 illustrate all too clearly the fragility and inequities of our interconnected world, while emissions continue to rise and carbon in the atmosphere is at its highest point in millions of years.

Over the past several years, Barnard College has steadily increased its commitment to reducing emissions, championing equitable and inclusive climate responses, and equipping our graduates to do the same. We share here our progress to date on the goals outlined in the 2019 Climate Action Vision – and our path forward.

Barnard is developing a pathway to net-zero emissions that includes building retrofits and renewable energy strategies for Scope 1 and 2 emissions. Our Circular Campus framework tackles our significant Scope 3 emissions, while finding solutions that support student affordability, benefit communities both local and global, and reshape habitual patterns of consumption. Barnard is increasing its climate and environment-related coursework and research across the curriculum, including welcoming new faculty and fostering a robust cross-disciplinary faculty learning community.

2020-2021 was a year of upheaval and loss. As we emerge from the pandemic, Barnard is ready to welcome a season of renewal and change.



# TABLE OF CONTENTS

---



**ENVIRONMENTAL JUSTICE,  
ACCESS & EQUITY ..... 1**

**CLIMATE ACTION: BY THE NUMBERS..... 2**

**ACADEMICS ..... 3**

- New Faculty
- Research Highlights
- Pedagogy

**CAMPUS CULTURE & OPERATIONS ..... 7**

- Pathway to Net Zero
- Emissions
- Circular Campus
- Grounds
- Engagement

**FINANCE & GOVERNANCE ..... 17**

- Leadership and Accountability
- Divestment
- Columbia Climate School
- Meeting the Challenge

**TIMELINE & TRACKING PROGRESS ..... 21**

**SUSTAINABLE PRACTICES COMMITTEE ..... 25**

# ENVIRONMENTAL JUSTICE, ACCESS, AND EQUITY

---

Our commitment to environmental justice, access, and equity is central to Barnard's climate vision. In 2020, the Office of Sustainability created a unified site for resources, events, and co-curricular programming that explore the intersection of social justice and climate change.

Barnard offers a wide range of coursework with an environmental justice lens, in departments including Architecture, Anthropology, Environmental Science, and Women's, Gender, and Sexuality Studies.

The Circular Campus framework is built on the understanding that circular, regenerative practices are beneficial to students, communities near and far, and the planet.

Highlights from 2020-21 include:

- Barnard's Student Government Association and Barnard Sustainability co-hosted a panel on Environmental Justice.
- The Center for Engaged Pedagogy and Barnard Sustainability spring workshop series included a session on Environmental Justice.
- Students, faculty, and staff joined a park cleanup and tree planting, co-hosted by the Morningside Park Alliance, the Office of Community Engagement and Inclusion, and Barnard Sustainability.
- The launch of the Rheaply platform, in collaboration with Access Barnard, supports access to affordable supplies.
- A Campus Conversation dedicated to "Sustainability and Access" explored inclusive sustainability practices.

# CLIMATE ACTION 2020-21: BY THE NUMBERS



### COURSES

**10%** of courses are Sustainability related or focused

**65** courses in **56%** of departments

### RESEARCH

**43** faculty in **21** departments engaged in sustainability or climate research

### PEDAGOGICAL SUPPORT

**4** CEP workshop sessions with **60+** participants

**7** departments or programs offer majors, tracks, or concentrations

### EMISSIONS REDUCTION: SCOPES 1-2

**37%** carbon intensity reduction from 2005

### EMISSIONS REDUCTION: SCOPES 3

**5+** event and programs, 200+ community members engaged:  
**1** Circular Campus

### GREEN SPACES

**50%** of grounds under organic care

### STUDENT EXPERIENCE

Nearly **700+** students engaged

### TRAVEL & COMMUTING

**1** campus conversation

### WASTE

Organics collection in **5** academic buildings, **30** offices, **3** dorms

### STRATEGIC PLANNING: 3 PROCESSES FOR COMMUNITY INPUT:

- Campus Conversations
- Citizen Assembly
- Middle States

### DECISION MAKING

**5** offices piloting Climate Community Commitment

### PROCUREMENT/ASSET MANAGEMENT

**1** Rheaply pilot

### ENDOWMENT MANAGEMENT

Climate Science List evaluates **30** oil and gas companies

### ACCOUNTABILITY & REPORTING

AASHE STARS Silver & Princeton Green Guide

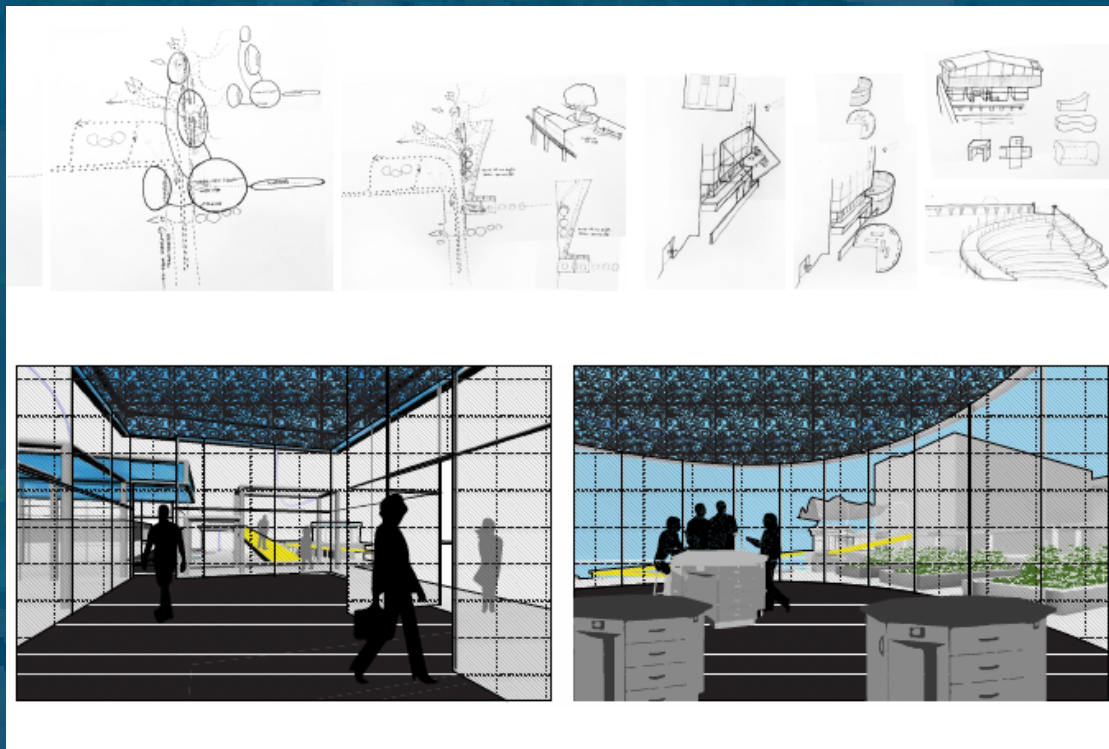
# ACADEMICS

---

Barnard offers a diverse range of courses that explore climate, sustainability, and human interaction with the environment. Students majoring in Environmental Science, Biology, Urban Studies, Anthropology, Architecture, and History can all pursue concentrations or tracks in these subjects. Departments ranging from Economics to Theatre offer additional coursework.

This year, the Anthropology Department welcomed 12 students to the new Political Ecology track, designed for students who wish to pursue studies in fields relevant to environmental justice, climate change, and sustainability.

2020-21 also marked the inaugural year of Barnard's new Environmental Humanities minor, offered by the Consortium for Critical Interdisciplinary Studies.



Architecture students explored issues of climate justice and imagined a “Climate Observatory” in the Bronx.

# NEW FACULTY

---

MARISA SOLOMON  
ASSISTANT PROFESSOR OF WOMEN'S, GENDER, AND SEXUALITY STUDIES



Solomon’s work looks at the durability of racism and its many material forms: toxicity’s movement through soil and bodies, the placement of landfills, waste infrastructure, and the technocratic planning and management of Black life and death. Her work focuses on how Black improvisation with waste’s form and meaning upend environmental thinking – including the raced, classed, and gendered stewards to whom the earth supposedly belongs.

ANGELO CAGLIOTI  
ASSISTANT PROFESSOR OF HISTORY



Caglioti’s work intersects environmental history, history of science, and late modern European history, with a particular focus on 19th- and 20th-century Italy. In environmental history, his work is concerned with climate history and the history of the climate crisis, as well as the management of water resources, the history of climate science and meteorology, eugenics and racial science, and the relationship between science and colonialism.

---

43

FACULTY IN

21

DEPARTMENTS CONDUCT CLIMATE OR  
SUSTAINABILITY RESEARCH

---

## RESEARCH HIGHLIGHTS

---



Paige West, the Claire Tow Professor of Anthropology, was awarded three major grants this past year, including the Guggenheim Fellowship, to work on conservation sustainability and marine systems in Papua New Guinea with her research partner.



Brian Mailloux, Professor of Environmental Science, and Elizabeth Cook, Assistant Professor of Environmental Science, received a grant from the National Science Foundation to explore the connections among green space, perception of risk, and well-being in times of a public health emergency that require people to stay indoors and isolated. You can [read their op-ed here](#).



Angela M. Simms, Assistant Professor of Sociology and Urban Studies, incorporates climate change and environmental justice into readings, lectures, and assignments in her courses Race, Ethnicity & Society and Metropolitics of Race and Place. She emphasizes how racialized capitalism and government policies shape racial groups' exposure to toxins and their vulnerability to increasingly extreme and volatile weather patterns.



Erika Kitzmiller, Term Assistant Professor of Education, co-authored *A Green Stimulus for K-12 Schools*. The report proposes a \$1.16 trillion schools stimulus package to support schools impacted by the COVID-19 pandemic, create jobs, deliver racial equity, improve health outcomes, slash carbon emissions, and improve resilience, and it would help the Biden administration target 40% of climate funding to disadvantaged communities.



## PEDAGOGY

---

This spring, the Center for Engaged Pedagogy, in partnership with the Sustainable Practices Committee, hosted four virtual sessions, the second iteration of the Sustaining Curricula Workshop Series. Sessions were designed to support faculty in their efforts to integrate environment, sustainability, and climate change into curricula and to explore interdisciplinary ways to structure collaboration across departments – for example, through funded, team-taught courses.

Each session began with a panel and Q&A facilitated by students and ended with a workshop component. Each workshop was attended by 20+ members of the community.

- **Theorizing the Environment**, with Hilary Callahan, Carl Wennerlind, and Orlando Bentancor
- **Climate Change and the Anthropocene**, with Jon Snow, Maria Rivera Maulucci, Andrew Crowther, and Angelo Caglioti
- **Environmental Justice**, with Elizabeth Cook, Manu Karuka, and Angela Simms
- **Design Decarbonization**, with Kadambari Baxi, Martin Stute, and Sandra Goldmark

---

**65**  
SUSTAINABILITY & CLIMATE COURSES, IN  
**56%**  
OF DEPARTMENTS

---

# CAMPUS CULTURE & OPERATIONS

---

Outside of the classroom, Barnard is working to reduce emissions and empower our students through climate literacy and co-curricular programming. In 2020-21, this work included:

- Developing a pathway to net-zero emissions
- Building our Circular Campus framework
- Centering and amplifying our community's work on environmental justice
- Creating opportunities for students, faculty, and staff to engage

---

# 37%

CARBON INTENSITY REDUCTION  
FROM 2005 LEVELS

---

# PATHWAY TO NET ZERO

---

In the December 2019 Climate Action Vision, Barnard committed to defining a pathway to carbon neutrality. In February 2020, the College issued a request for qualifications and selected Energy Strategies and MEP to assist with the process. In 2020-21, the College began working with these consulting partners to develop a Planning Roadmap to determine the required annual emissions reductions to achieve net zero, and to outline in broad strokes what it may take to get there operationally and financially. The pathway will take into account all three scopes, and will require an innovative approach to Scope three accounting processes. In spring of 2021, the College was awarded \$98,000 of NYSERDA funding for the the next phase of work.

The urgent need for this work is clear: In order to align with science-based emissions reductions targets, Barnard will need to decarbonize campus buildings and energy systems, starting now. In addition, Local Law 97 regulations pose a significant financial risk: With a business-as-usual approach, by 2030 the College will face estimated fines of as much as \$3 million, with an estimated annual fine of \$1.5 million starting in 2035. Ten years may seem distant, but it is a short window to undertake the planning and retrofits necessary to meet our goals and avoid significant financial risks.

## SCOPE 1

Direct greenhouse (GHG) emissions that occur from sources that are controlled or owned by an organization: for example, burning fuel for heating or cooling.

## SCOPE 2

Indirect GHG emissions associated with the purchase of electricity, steam, heat, or cooling: for example, electricity for lights and computers.

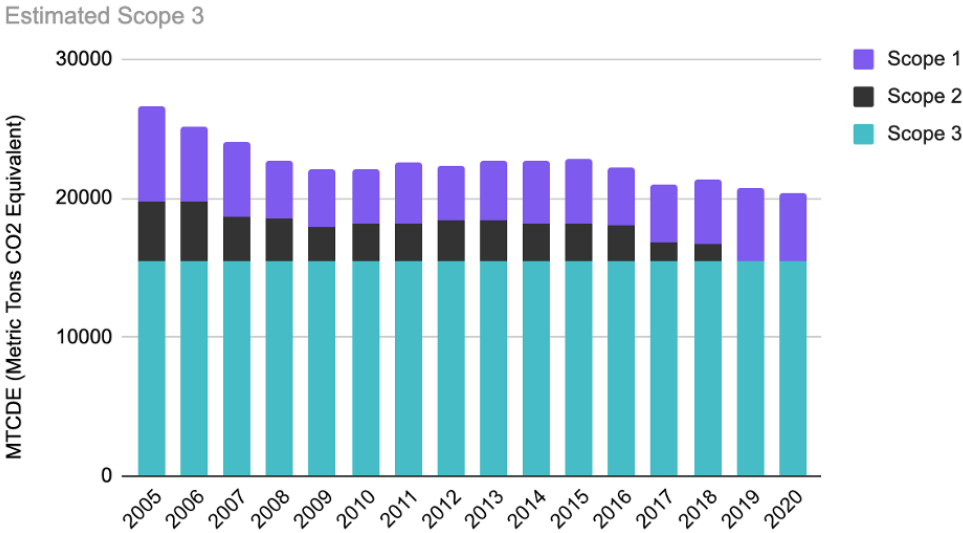
## SCOPE 3

Result of activities from assets not owned or controlled by the reporting organization, but that the organization indirectly impacts in its value chain: travel, purchased goods, food, and waste.

# EMISSIONS

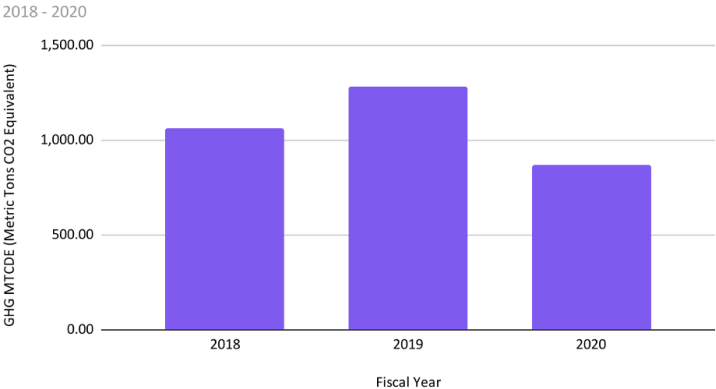
Barnard’s emissions show an overall decline, due to our purchase of wind RECs in 2018-19 and our switch to natural gas from #2 fuel oil in 2008. However, our Scope 1 emissions, largely from heating and cooling, are on the rise. And the benefits of our wind RECs are time-limited, as those offsets will not be Local Law 97 compliant. Our pathway to net zero, therefore, will look at building retrofits and electrification, plus sources for renewable electricity.

Barnard GHG Emissions 2005 - 2020



Each year, we increase our capacity to accurately measure Scope 3 emissions, including from air travel. Emissions from air travel average 12.14% of total emissions. This year, Barnard Sustainability hosted a campus conversation on emissions from air travel, a first step in engaging our community on this tricky but critical topic.

Estimated GHG Emissions from Flights



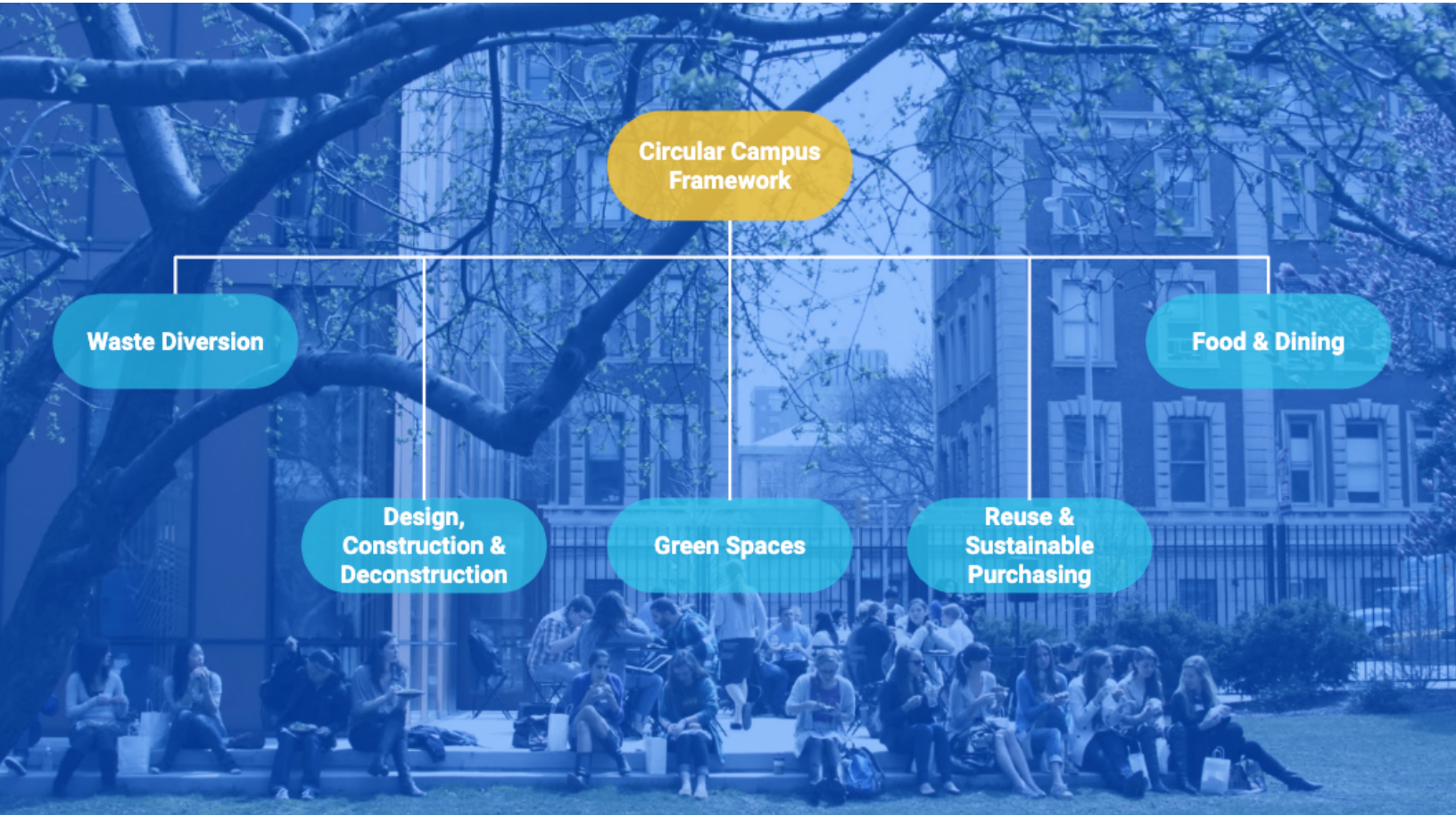
# CIRCULAR CAMPUS

---

This spring, we expanded our aggressive and innovative approach to Scope 3 emissions. Nationwide, an increasing number of organizations and campuses are acknowledging that they need to better track and address Scope 3 emissions. Due to our early interest in this area, Barnard has taken a leadership role.

Circularity invites a unified approach, linking strategies and stakeholders and breaking down silos and avoiding duplication of effort. Most importantly, the principles of circularity align with the core values of the Barnard community; as a holistic and regenerative framework, this approach is designed not only to reduce negative social and environmental impacts but also to support student access and affordability and equitable economies for communities local and global.

This framework is already being used as a model for peer institution discussions with the Ellen MacArthur Foundation.

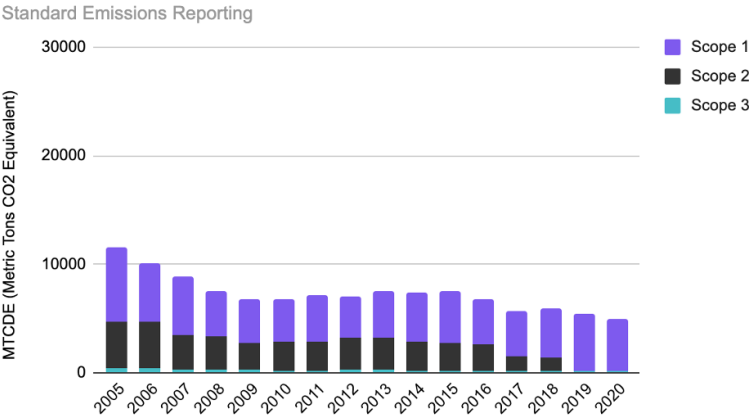


# CIRCULAR CAMPUS: REPORTING EMISSIONS

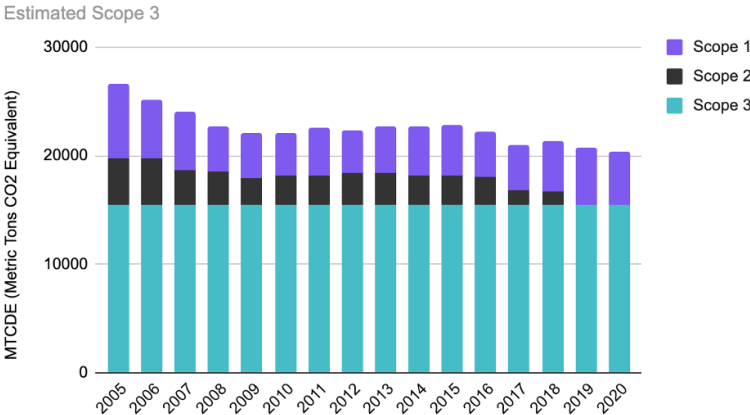
A significant component of our work lies in advancing reliable processes for accurately measuring and accounting for Scope 3 emissions, which is still an emerging field. The Phase Two engagement with Energy Strategies will include a deep dive into tracking Scope 3 emissions, and we are joining a SIMAP (a carbon- and nitrogen-accounting platform) working group to help test their new Scope 3 accounting tools. In partnership with a local performing arts organization, Barnard Sustainability is participating in an ICLEI supply-chain-based accounting cohort, working to expand and refine our capacity to assess Scope 3 emissions.

Barnard Sustainability has begun to work with the Finance and Business Services offices to integrate our Scope 3 approach with the Workday transition; this is an enormous opportunity to create structures for tracking and incentivizing behaviors, find savings for the College, reduce emissions, and serve as a model for other institutions.

Barnard GHG Emissions 2005 - 2020



Barnard GHG Emissions 2005 - 2020



A comparison of our GHG emissions using standard emission reporting protocols, which focus heavily on Scope 1 and Scope 2, and an experimental model we are developing that includes our estimated Scope 3 emissions.

## CIRCULAR CAMPUS: CO-CREATION

---

Building a circular campus necessarily involves partnerships and co-creation, both internal and external – it's all about collaboration. This year, Barnard:

- Launched a pilot of the Rheaply internal reuse platform. Rheaply is a BIPOC-owned startup that builds internal marketplaces and sharing economies for higher education and corporate partners. As the first New York area partners, several Barnard offices and departments are testing the program: arts departments, the Design Center, Business Services, and Access Barnard. The pilot got off to a modest start due to the pandemic, with 136 users and 260 listings to date, but we look forward to reaching a wider audience in the fall.
- Partnered with Bloxhub, a Danish design and innovation hub, to develop circular approaches in three areas of campus operations:
  - o Design Construction and Deconstruction
  - o Green Spaces
  - o Sustainable Purchase and Internal Reuse
- Shared Barnard's approach to circularity at the New York Circular Cities event hosted by the Ellen MacArthur Foundation.



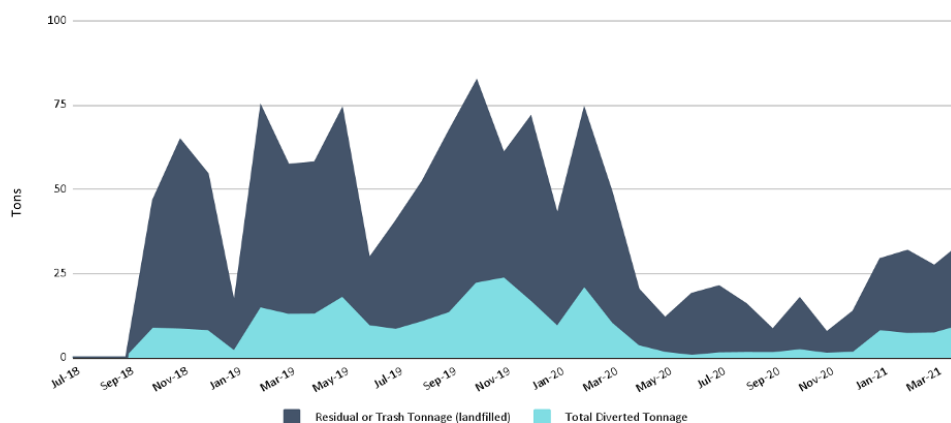
# CIRCULAR CAMPUS: PROCUREMENT AND WASTE

A circular approach to consumption entails strategies at every point along the cycle – from procurement to reuse to waste management. Barnard currently averages a 24% diversion rate. This is on par for some peers but a long way from the 80% goal of New York’s Zero Waste by 2030 program.

This spring, Barnard Facilities and the Office of Sustainability partnered to suspend desk-side bin service; studies have shown that diversion rates improve when people sort their own waste, and our hardworking facilities team can now devote attention to important maintenance and cleaning work.

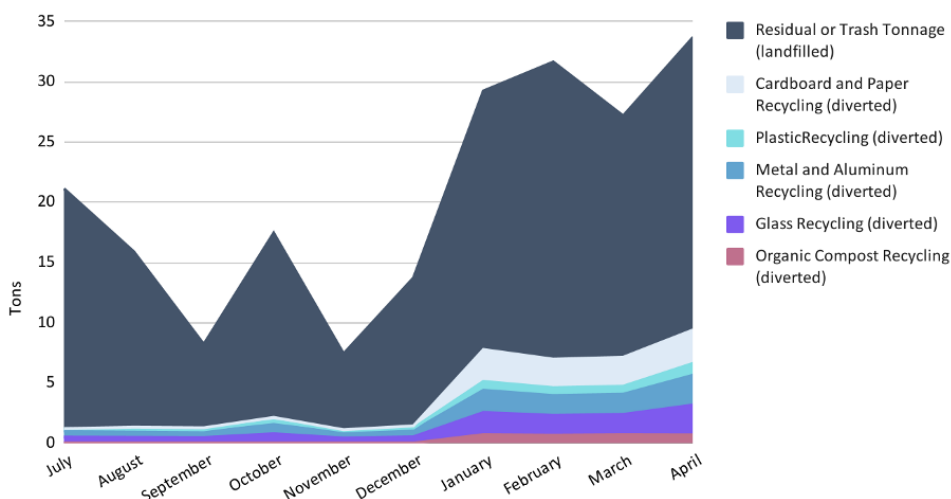
## Total Waste

July 2018 - April 2021



## Total Waste

July 2020 - April 2021





## CIRCULAR CAMPUS: INTERNAL REUSE

---

Barnard's Business Services team participated in the Bloxhub-Barnard workshop to create a set of guiding principles for Purchasing and Internal Reuse and is partnering with the Office of Sustainability to create an on-campus exchange "store" and promote reuse on Rheaply. The Office has a long-standing practice of promoting internal reuse – this year, saving the College funds and emissions.

This spring, Barnard Sustainability was able to host a small "Give and Go Green" event, after suspending the program in 2020 due to the pandemic. The event was much smaller this year than previously but nonetheless diverted over 1,200 pounds of goods. Move-out is one of our largest single waste streams, and, together with the fall move-in Green Sale, this program is a cornerstone of Circular Campus. We look forward to reviving and expanding the program with the help of campus partners and the use of the Rheaply platform.



## GROUNDS

---

Members of Barnard's grounds team joined the Barnard-Bloxhub Circular Campus workshops, working with faculty and staff to develop a set of guiding principles for green spaces on campus; one key goal is to build on the success of the Arthur Ross Greenhouse and the three community gardens (two student, one faculty) and continue to expand opportunities for community participation and education. Additional goals include increasing biodiversity on campus and transitioning to all-electric grounds care.

As a first step, in 2021, Barnard hosted two planting days, for the Alicia Lawrence Memorial Garden and to celebrate Earth Day.



# ENGAGEMENT

---

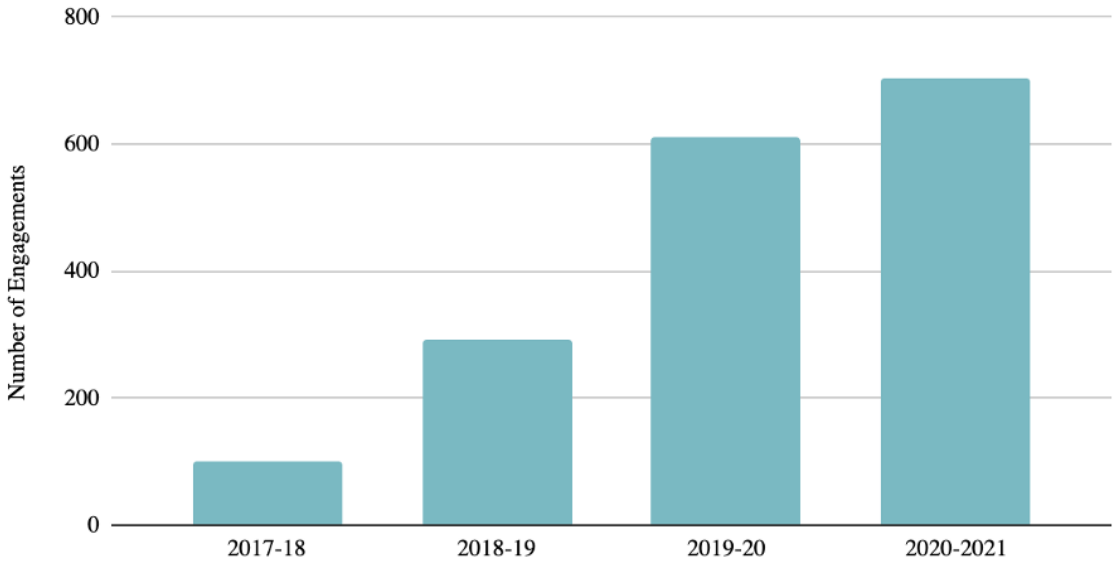
Student, faculty, and staff engagement with sustainability on campus continues to grow.

91% of participants in the Campus Conversation series believed that climate and sustainability should be reflected in Barnard’s Foundations curriculum, and Barnard’s Student Government Association reported strong demand for climate- and sustainability-related courses and programming in the Dinner After Dark survey.

Student voices continue to shape climate action on campus: The Citizen Assembly was the direct result of student activism, students are active members of the Sustainable Practices Committee, and a dedicated team of student workers supports research, programming, and outreach for the Office of Sustainability.

## Community Engagement

2017-2021



# FINANCE & GOVERNANCE

---

No climate plan can succeed without considering *how* to achieve our goals. Reducing emissions and training the next generation of leaders is possible only through coordinated effort, distributed leadership, and shared accountability.

Key strategies include:

- Improved measurement and data collection every year
- Participatory and inclusive processes for determining priorities
- Regular reporting and shared ownership of goals

---

## 4 headlines

AASHE: CLIMATE SCIENCE LIST  
AASHE: WELL-BEING AND WORK  
PRINCETON GREEN GUIDE  
ELLEN MACARTHUR FOUNDATION PROFILE

---

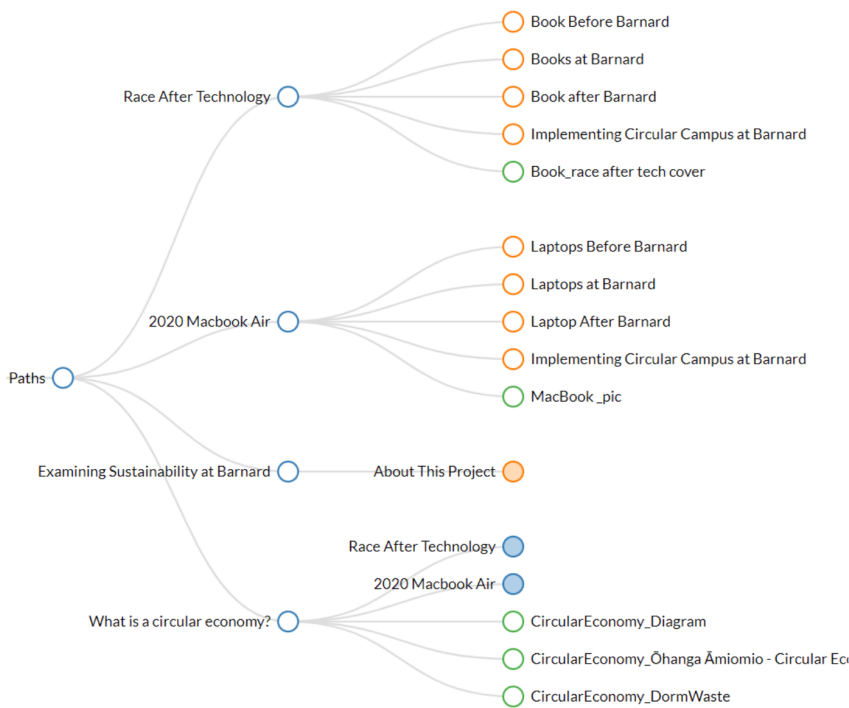
# DISTRIBUTED LEADERSHIP, DISTRIBUTED ACCOUNTABILITY

The scale of change required to meet New York City regulatory requirements, Barnard goals, and the needs of current and future students means that climate leadership and accountability must be shared across the College.

Barnard Sustainability has worked closely with campus partners every year, and this year created a more structured process to support departments in incorporating climate action into their missions, strategic plans, and operations. The Campus Climate Commitment is a facilitated workshop process designed to help individual departments identify and adopt internal mission-based climate goals. Five offices are participating in the program: the Digital Humanities Center (DHC), the Center for Engaged Pedagogy (CEP), the Provost’s Office, the Design Center, and the Architecture Department.

Collaborations with Business Services and Finance, Facilities, Community Engagement and Inclusion, the Design Center, and more will help Barnard build climate considerations into decision-making at every level.

Leaders across campus are showing the way: The DHC has built sustainability into its core values, articulating that vision through internal operational decisions such as purchasing and event planning, programming, and research. In 2020, a student cohort used Scalar to map the environmental impact of Barnard’s technology to better understand its connections to racial, gender, and class inequity.



## CLIMATE SCIENCE LIST

---

In 2019, Barnard's Board of Trustees released a Climate Science List composed of 30 fossil fuel companies, which were graded based on six criteria to determine their attitudes toward climate science and their efforts toward addressing climate change. In June 2020, the College divested its endowment of directly held investments that had Climate Action List scores below a certain threshold.

## COLUMBIA CLIMATE SCHOOL

---

In 2020-21, several Barnard faculty members participated in the development of the Columbia Climate School. This new school, the first of its kind, will provide opportunities for interdisciplinary research, courses, and partnerships aimed at tackling a broad range of climate and sustainability challenges and training the next generation of climate leaders.

- Paige West, the Claire Tow Professor of Anthropology, served on the 2019 Climate School Task Force and the 2020-21 Design Committee.
- Martin Stute, the Alena Wels Hirschorn '58 and Martin Hirschorn Professor in Environmental and Applied Sciences and the Co-Chair of the Environmental Science Department, contributed to a working group developing recommendations for a program in decarbonization.
- Associate Professor of Professional Practice in Theatre Sandra Goldmark served on the Leadership Team and Design Committee.
- Several Barnard faculty and staff participated in roundtable discussions on a range of topics, including interdisciplinary work, building a sustainable living campus, and DEIA and the Columbia Climate School.

## MEETING THE CHALLENGE

---

Over the past four years, Barnard has:

- Created a dedicated office and staff.
- Published the College's first comprehensive Climate Action Statement, with comprehensive visions and regular tracking of progress.
- Radically improved measurement and reporting of greenhouse gas emissions, climate coursework, research, waste diversion rates, and engagement.
- Worked with internal and external partners to create an innovative, holistic approach to emissions reduction that supports student access and affordability.

The next several years are critical, both in terms of global emissions reductions goals and opportunities for Barnard to continue to grow and lead. Success in the next phase will require that Barnard:

- Invest the resources necessary to finalize a timeline for net zero and begin the process of implementation.
- Reduce our emissions significantly, in line with our own science-based net-zero targets and NYS regulatory frameworks.
- Create regular reporting structures, including regular presentations to and oversight by the Board of Trustees, with the regular engagement of staff, faculty, and students.
- Build accountability for meeting climate goals in the relevant departments and offices.
- Commit robust support and funding for faculty development and pedagogical support.
- Build organizational structures that break down silos and support the synergies and intersections between Campus Sustainability and Climate Action, DEI, and Health and Wellness.

# CLIMATE ACTION TIMELINE

1982

COURSEWORK AND RESEARCH IN SEVERAL DEPARTMENTS – E.G., ANTHROPOLOGY

BARNARD JOINS MAYOR'S CARBON CHALLENGE

STUDENT LEADERSHIP OF GIVE AND GO GREEN

1ST ENERGY MASTER PLAN

DIVESTMENT TASK FORCE

ENVIRONMENTAL SCIENCE DEPARTMENT FOUNDED

SUSTAINABLE PRACTICES COMMITTEE

2005

DIANA CENTER LEED-GOLD-CERTIFIED

WATER-FILLING STATIONS INSTALLED

LED REPLACEMENT STARTED

2017

FIRST CAMPUS CONVERSATION SERIES

SUSTAINABLE PRACTICES COMMITTEE EXPANDED TO INCLUDE MORE FACULTY

1ST COMMUNITY GARDEN PLANTED

MILSTEIN CENTER LEED-CERTIFIED

DATA COLLECTION PROCESSES DEVELOPED FOR EMISSIONS, WASTE, COURSEWORK, ENGAGEMENT

MAJORS, MINORS, OR TRACKS IN 6 DEPARTMENTS/PROGRAMS

STUDENT CLIMATE ACTION GRANT

DESKSIDE BIN SERVICE SUSPENDED

COLLABORATIONS WITH STUDENT GOVERNMENT, BEYOND BARNARD, ACCESS BARNARD, BUSINESS SERVICES, DHC, CEP, CEI, ATHENA, AND MORE

OFFICE OF SUSTAINABILITY AND CLIMATE ACTION CREATED

OFFICE OF SUSTAINABILITY MANAGEMENT OF GIVE AND GO GREEN INCREASES SALES 10X

ORGANICS COLLECTION

100% ORGANIC CARE FOR FUTTER FIELD

2ND COMMUNITY GARDEN PLANTED

100% WIND RECS PURCHASED

CLIMATE ACTION VISION

3RD COMMUNITY GARDEN PLANTED

INTERNAL-REUSE PLATFORM LAUNCHED

PEDAGOGY WORKSHOPS DEVELOPED

AASHE STARS SILVER RATING

2ND CAMPUS CONVERSATION SERIES

2021

**NET-ZERO EMISSIONS. FULLY CIRCULAR CAMPUS.  
100% OF STUDENTS ENGAGED.**



# TRACKING PROGRESS

## ACADEMICS

Vision / recommendations from CAV and CA	Current State	Target	DATE	Next Steps	Relevant Departments/Offices
<p>All students graduating from Barnard engage with climate and sustainability from multiple perspectives in coursework and research across the curriculum.</p> <p>Barnard's interdisciplinary approach to climate and sustainability supports innovative research, fosters civic engagement, and builds practical solutions.</p> <p>Climate and sustainability are part of the required curriculum at Barnard.</p>	10% of courses are sustainability focussed or related: 65 Courses in 56% of Departments	90% of Departments have at least one sustainability / climate related course.	2025	<p>Include question on faculty personnel form for spring 2021</p> <p>Create fund for teaching / incentives for course development fall 2021</p> <p>Develop a reliable tracking system through Course Management 2023</p>	Provost, CEP, Academic Depts, Chairs
	2 Departments offer majors, 6 departments offer minors, tracks, or concentrations	100% of students engage with climate and sustainability before they graduate, through their major, foundations or electives.			
	4.7% of students graduate from programs that require an understanding of the concept of sustainability				
	43 Faculty engage in climate research in 21 Departments	TBD			
	2 CEP Sustaining Curricula Workshops (2020 and 2021) with 90+ attendees over 2 years	Annual pedagogy workshop series with 85% faculty participation.	2025	Define 2022 workshop content and goals.	CEP
	Foundations Proposal from 2018 Working Group with 3 potential models, 1 Campus conversation	Climate/sustainability included in required curriculum.	2023	Create Foundations review working group.	Provost, Foundations Review Working Groups

## CAMPUS CULTURE AND OPERATIONS

Vision / recommendations from CAV and CA	Current State	Target	Date	Next Steps	Relevant Departments/Offices
<b>BUILDINGS AND ENERGY - NET ZERO SCOPES 1 &amp; 2</b>					
<p>Barnard achieves emissions reductions across all three scopes, in line with or exceeding the ambitious New York state and city standards. (CAV)</p>	<p>2019 commitment to defining pathway to carbon neutrality</p> <p>\$8K initial investment in consultants to create rough draft pathway to net zero</p> <p>37% reduction in carbon intensity since 2005</p> <p>100% electricity offset by Wind Rec's</p>	50% reduction in emissions by 2030, net zero by 2050 (aligned with CU and USA goals)	2030 2050	<p>Finance next phase of consultant work to define pathway and costs: Proposal in to NYSERDA, need approx \$85K-\$125K if don't get funding to move forward with timeline and costing.</p> <p>Complete lighting retrofits under way since 2013. Need accurate data and timeline.</p> <p>Assess potential financial impact of Local Law 97 penalties</p>	Facilities and Capital Planning, Finance, BoT
	LEED certification for Diana and Milstein	Circular Design, Construction, and Deconstruction guidelines in place for all renovations and new construction.	2022	Define standards and checklists (Bloxxhub workshop)	Capital Planning, Facilities, Purchasing.

CONSUMPTION AND WASTE - CIRCULAR CAMPUS, SCOPE 3 EMISSIONS					
Barnard's environmentally sound and socially ethical system of consumption on campus serves as a model for circular economy solutions. (CAV)	24% landfill diversion rate	80% diversion by 2030, in line with NYC zero waste goals. NEED TONNAGE TARGET.	2030		Facilities, Purchasing, BCIT
	Organics collection in 5 academic buildings, 30 offices, 3 dorms	Organics collection in all academic buildings, offices, dorms, and dining areas.	2022		Facilities, Dining, Res Life
	Rheaply pilot launched 2021: 112 pilot users	Rheaply: 5 labs, 10 departments, 5 offices, 500 active users by 2022.  \$100,000 dollars saved 10 tons of waste diverted by 2025.	2022 2025	Get comparable stats from Rheaply to set targets  Expand users summer & fall 2021  Expand to CU partners 2022	Purchasing, Academic Departments, Milstein Centers, Student Life, Res Life
	Green Sale sales 2019: \$6,000 in sales and 150	250 students engaged and \$10,000 in-person sales.	2023	Expand and stabilize Give and Go Green.	Res Life, Student Life, Events, Facilities
	students engaged.	300 students engaged online and \$20,000 in Rheaply exchanges		Expand use of <del>Rheaply</del> for move-in / move-out  Expand sales to returning students	
	Ad hoc internal reuse and sustainable purchasing. No clear data.	50% of all materials are reclaimed and 80% of new materials are sustainably/ethically/locally / MWBE sourced.	2025	Define clear internal reuse targets and sustainable purchasing policies  Workday integration to track data	Finance, Purchasing, Capital Planning.
	1 campus conversation on air travel.	Replace, reduce, or offset air travel to net zero.	2030	Collect reliable data on air travel through Workday integration.  For BC-financed travel, establish mandatory College-sponsored offset program that prioritizes local, women and BIPOC centered projects	Finance, Provost Office, HR
	No reliable data on local food or food waste. No credible initiatives with <u>current dining provider.</u>	Need some data to set targets.		Introduce sustainability KPI into dining contract	Dining Services
GROUNDS					
Outdoor spaces are pollinator- and local flora-friendly, accessible to and cared for by the community, and provide a healthy oasis in the urban landscape (CAV)	50% grounds (Futter Field) maintained by an organic lawn care service	100% grounds are maintained with integrated/organic care that supports biodiversity, with clear limits on synthetic fertilizers and pesticides.	2025	Define master plan for grounds (Bloxhub workshop)  Review Sav-A-Tree <u>contract</u> and identify alternative vendors as needed.  Create accurate census of plants and care.	Circular Campus Working Group, Facilities
	3 community gardens: students' in Quad and Milstein, and faculty's in Cathedral Gardens				
	Teaching spaces in Arthur Ross Greenhouse and Diana roof garden	Active teaching across grounds.			Facilities, Academic Departments
	1st planting day and community park clean up 2021	Bi-annual planting and grounds care days.	2022		Facilities, CEI

CAMPUS CULTURE					
	<p>Barnard community encourages and engages with sustainability on campus and beyond. (CAV)</p> <p>Campus initiatives on sustainability, diversity and inclusion, wellness, and other mission-driven values are integrated and mutually supportive. (CAV)</p> <p>600 students engaged 2019-20.</p>	<p>100% of students leave Barnard with basic climate literacy, and have engaged with sustainability or climate at least once per year.</p>	2025	<p>Make sustainability programming mandatory at NSOP</p> <p>Include sustainability training in RA / Res Life programming</p> <p>Work with CEI &amp; Athena to develop climate/community opportunities</p> <p>Career events and opportunities highlighted by Beyond Barnard - need internal target</p>	<p>Student Life, Res Life, CEI, Athena, Beyond Barnard, Dean's Office</p>
	<p>\$5,000 Student Climate Action grant launched 2019: 10 applicants, 6 grants</p>	<p>Annual grant program offered to students, faculty, and staff, offered in conjunction with DEI and Wellness.</p>	2022	<p>Work with Council on DEI to create unified Sustainability/ Wellness / DEI grant program</p>	<p>DEI, Wellness</p>
	<p>Collaborations with: Athena, CEP, DHC, Beyond Barnard, DEI, SGA, CEI, Design Center, Access Barnard</p>	<p>100% of student-facing offices have internal climate or sustainability programming.</p>	2023	<p>Engage with Res Life and Student Life to develop student programming.</p>	

## FINANCE & GOVERNANCE

Vision / recommendations from CAV and CA	Current State	Target	Date	Next Steps	Relevant Departments/Offices
<p>Climate and sustainability are integrated into institutional decision making and strategic planning at the highest levels. (CAV)</p> <p>Stakeholders across campus, at all levels, participate in defining climate and sustainability goals and are accountable for meeting them. (CAV)</p> <p>Progress is regularly assessed with senior staff, faculty, SGA, and Board of Trustees. (CAV)</p>	<p>STARS Report completed Spring 2020, Silver Rating</p> <p>Princeton Green Guide</p> <p>Ranked 6th of 2020 respondents by AASHE in the Wellbeing &amp; Work category</p>	<p>Resubmit STAR, achieve Gold Rating</p>	2023	<p>Meet with all departments to set climate commitment. Identify areas for STARS improvement</p> <p>Assess progress and identify gaps in Middle States process by fall 2021.</p>	<p>Institutional Assessment</p>
	<p>2019 Climate Science List with scores on 30 oil and gas companies.</p>	<p>Divestment process completed June 2020.</p>	2020	<p>Publish update on website re: June 2020 completion</p>	<p>Finance, Task Force, BoT</p>
	<p>In process of assessing ESG investment options with TIAA for faculty and staff.</p>	<p>Provide investment options with scores of B or above.</p>	2021	<p>Waiting to receive options from TIAA (for 12+ months)</p>	<p>Finance, HR, TIAA</p>
	<p>Outreach program to engage offices launched 2019 (Waste sorting - 4 offices) and expanded 2021 (Community Climate Commitment - 5 offices)</p>	<p>100% of Administrative Offices have clear internal target.</p>	2023	<p>Expand Community Climate Commitment with BCIT, Res Life, Student Life, HR, Beyond Barnard, Access Barnard, Development.</p> <p>Begin with 1-2 Academic Depts. 2021-22</p>	<p>All</p>
	<p>Office of Sustainability created 2017.</p> <p>Meetings with President &amp; VP Operations every 6 weeks.</p> <p>Reports to faculty approx 1X per year.</p>	<p>Regular reporting timelines and structures with key campus stakeholders.</p>	2021	<p>Meetings with President &amp; VP Operations every 6 weeks.</p> <p>Meet with Senior Staff 2X per semester</p> <p>Bi-weekly meetings with Provost &amp; VP Operations</p> <p>Report to BoT BET committee 2X per year</p> <p>1X per semester report to Faculty</p> <p>1X per year report to All Staff</p>	<p>President, Senior Staff, BoT, FGP</p>

# SUSTAINABLE PRACTICES COMMITTEE 2020-21

---

**Sandra Goldmark**, Chair, Associate Professor of Professional Practice in Theatre, Director of Campus Sustainability and Climate Action

**Laura O'Connell**, Associate VP, Facilities & Capital Projects

**Leslie Raucher**, Associate Director of Campus Sustainability and Climate Action

**Anindita Das '21**, Student Government Representative for Sustainable Initiatives

**Aastha Jain '21**, Student Government Representative for Sustainable Initiatives

**Rachel Elkis '22**, Student Government Representative for Sustainable Initiatives

**Severin Fowles**, Professor of Anthropology

**Kathryn Gerlach**, Director of Media Relations

**Terryanne Maenza-Gmelch**, Senior Lecturer in Environmental Science

**Katelyn Dutton '14**, Director of Family Engagement & Special Assistant to the President

**Mary Joan Murphy**, Executive Director of Student Health and Wellness Programs