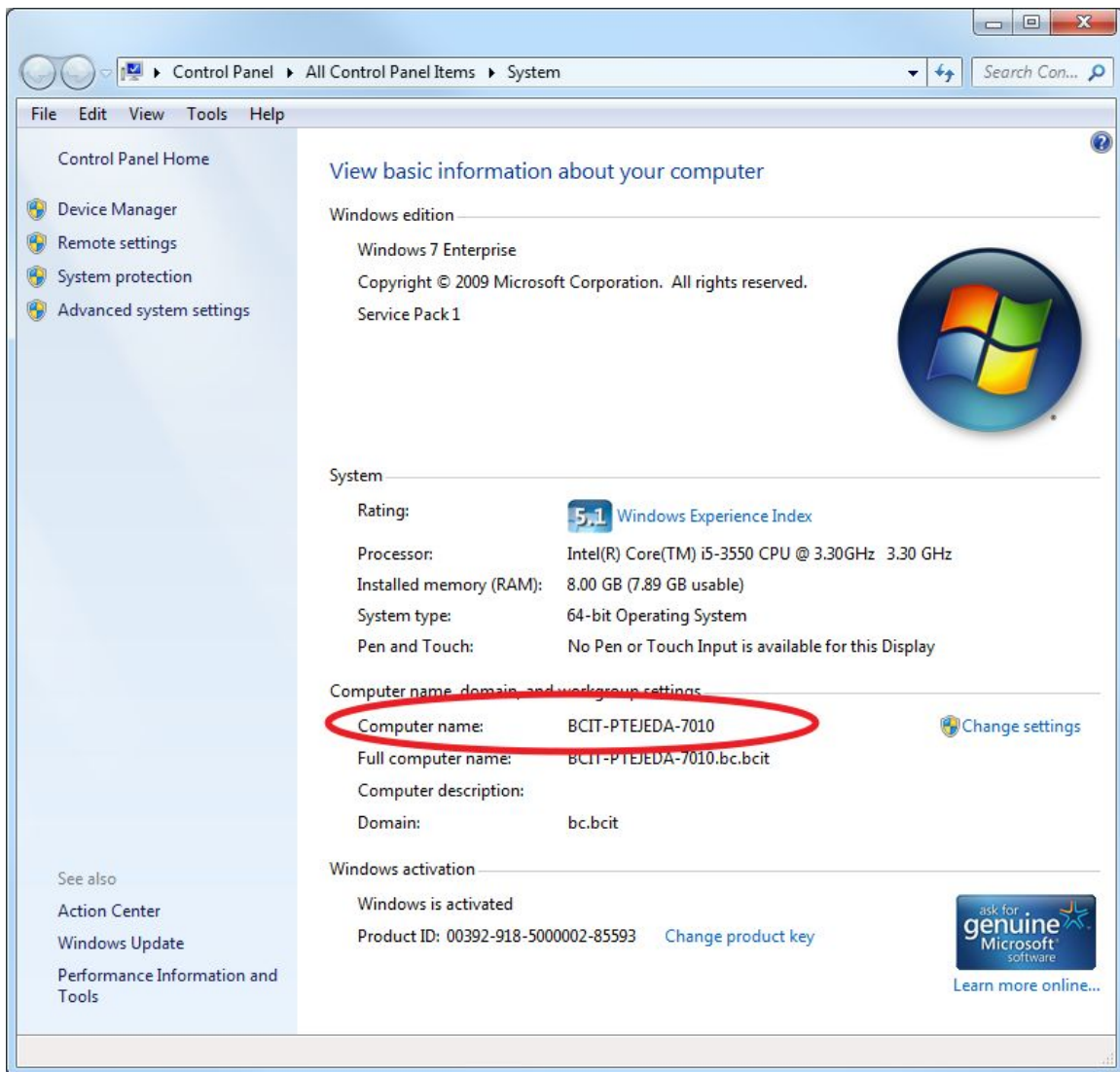


To connect to your work PC from a personal Mac, you'll need to run the latest version of Java, install the Junos Pulse client, install Remote Desktop Client for the Mac, and get the computer name of your work PC.

To get the computer name of your work PC, when you are at your Desk, go to your desktop and right click on the My Computer icon on your Desktop. Select properties from the Menu.

A new window will appear and in the middle of the screen will be the computer name listed. Record this information to use later when you are home.



It is recommend that you use Firefox as your browser when accessing Remote Access Portal

The latest version of Firefox can be downloaded from <http://www.mozilla.org/en-US/firefox/new/?from=getfirefox>

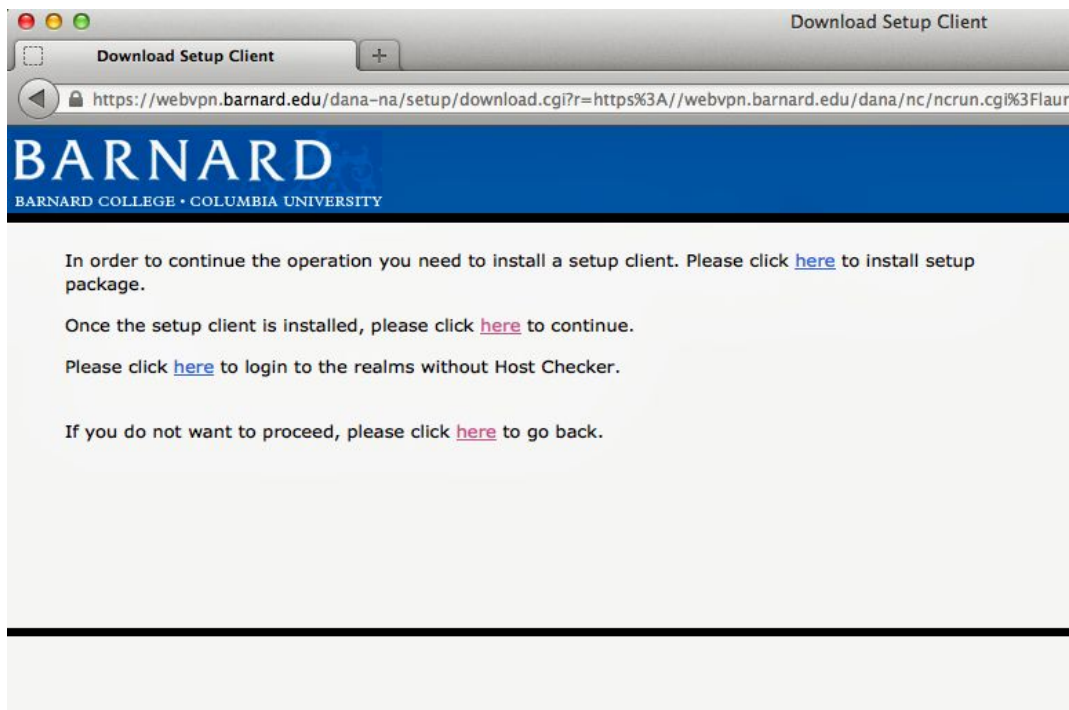
The latest version of Remote Desktop Client for the Mac can be downloaded from the Mac App Store - just search for Microsoft Remote Desktop.

The latest version of Java can be downloaded from <http://www.java.com/en/>

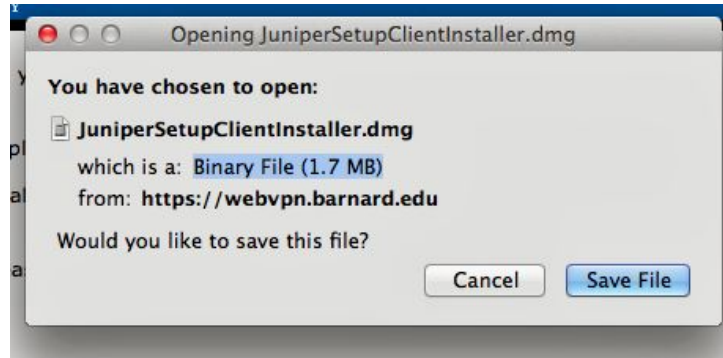
After installing and updating Firefox, Java and Remote Desktop, go to <https://webvpn.barnard.edu/>.

Junos Pulse is available after logging into WebVPN <https://webvpn.barnard.edu>

Enter your Barnard Username and password. Click on the Junos Pulse link. You will be brought to the following screen.



Follow the instructions on the page to install the setup package. Click on the first here.



Save the file and install the program.

Once it's completed, restart Firefox and go back to <https://webvpn.barnard.edu/>.

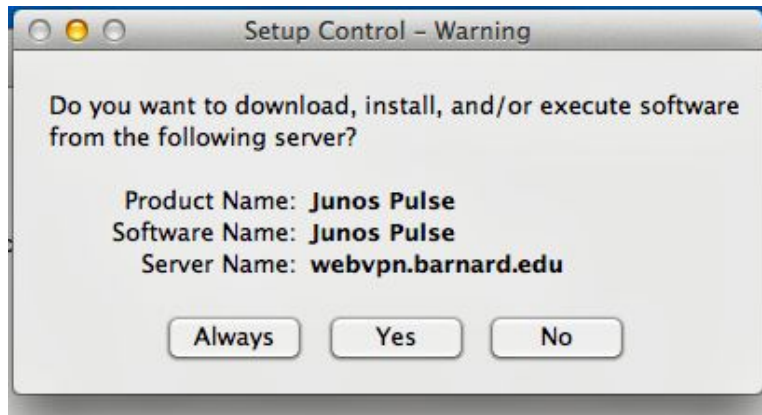
Enter your Barnard Username and password. Click on the Junos Pulse link. You will see the following screen. Click on Run.



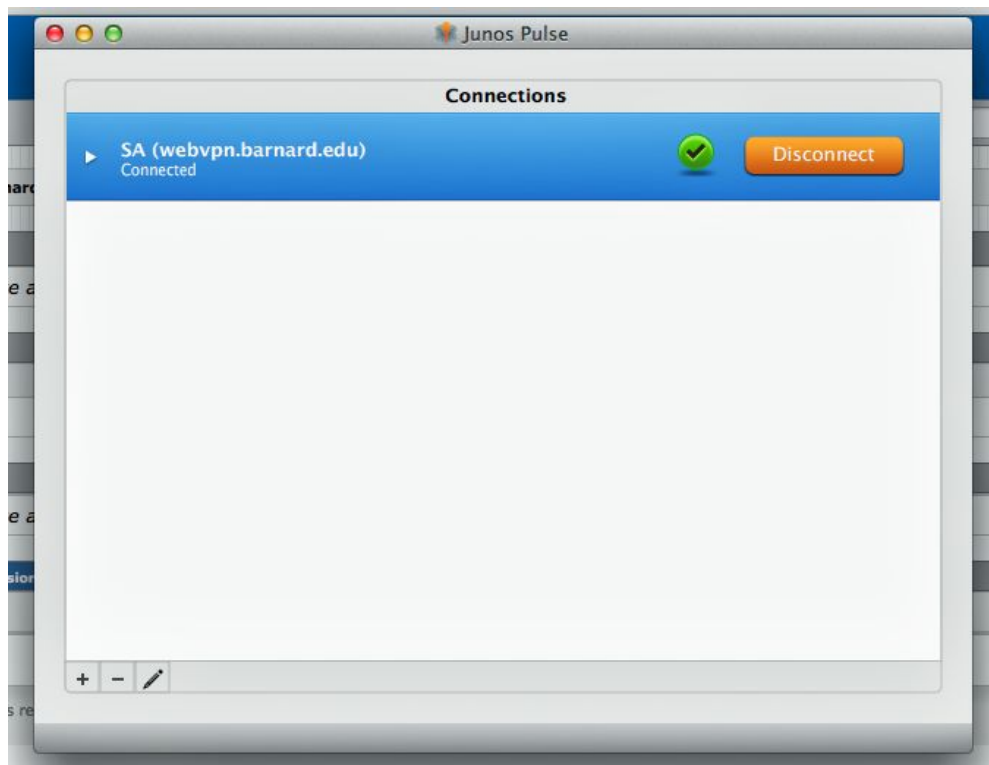
Java will ask you if you wish to block the application. Select Don't Block.



You will be then prompted if you wish to execute the software from the following server. Click on Always.



If successful, you will get the following screen confirming you can connect.



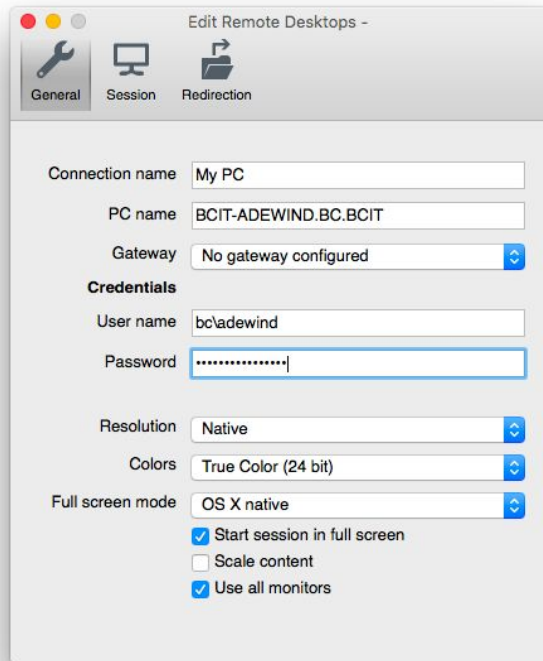
You have now successfully connected to the Barnard Internal Network using WebVPN.

Open Microsoft Remote Desktop application and click “New.”

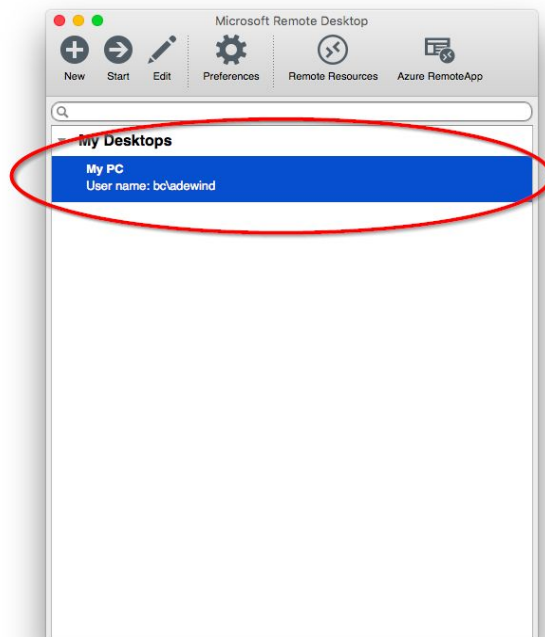


There will be several blank fields you must fill in.

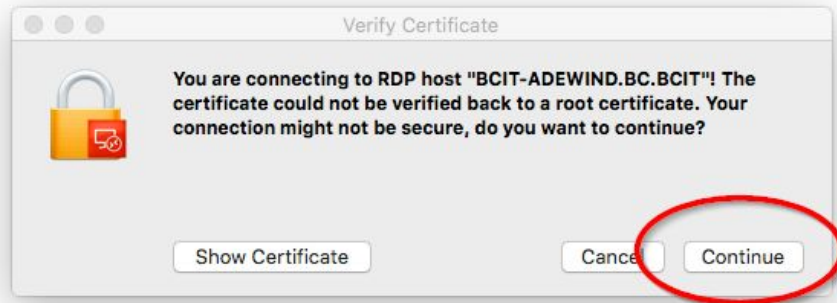
- Connection name: Enter something like “My PC Remote Connection”
- PC Name: Enter the name of your PC found from earlier on. Ensure that you append “.BC.BCIT” to the end of the PC name or it will not allow you to connect
- Gateway: No gateway configured
- Credentials: bc\yourusername
- password: your password
- You may leave all other settings as they are.



Click the red “x” at the top right hand corner of this window to close it. You will now see a connection listed under my desktops. Double click the connection that you just made.



You may see the following error below, just click continue.



Once you have done so it should connect you to your office PC.